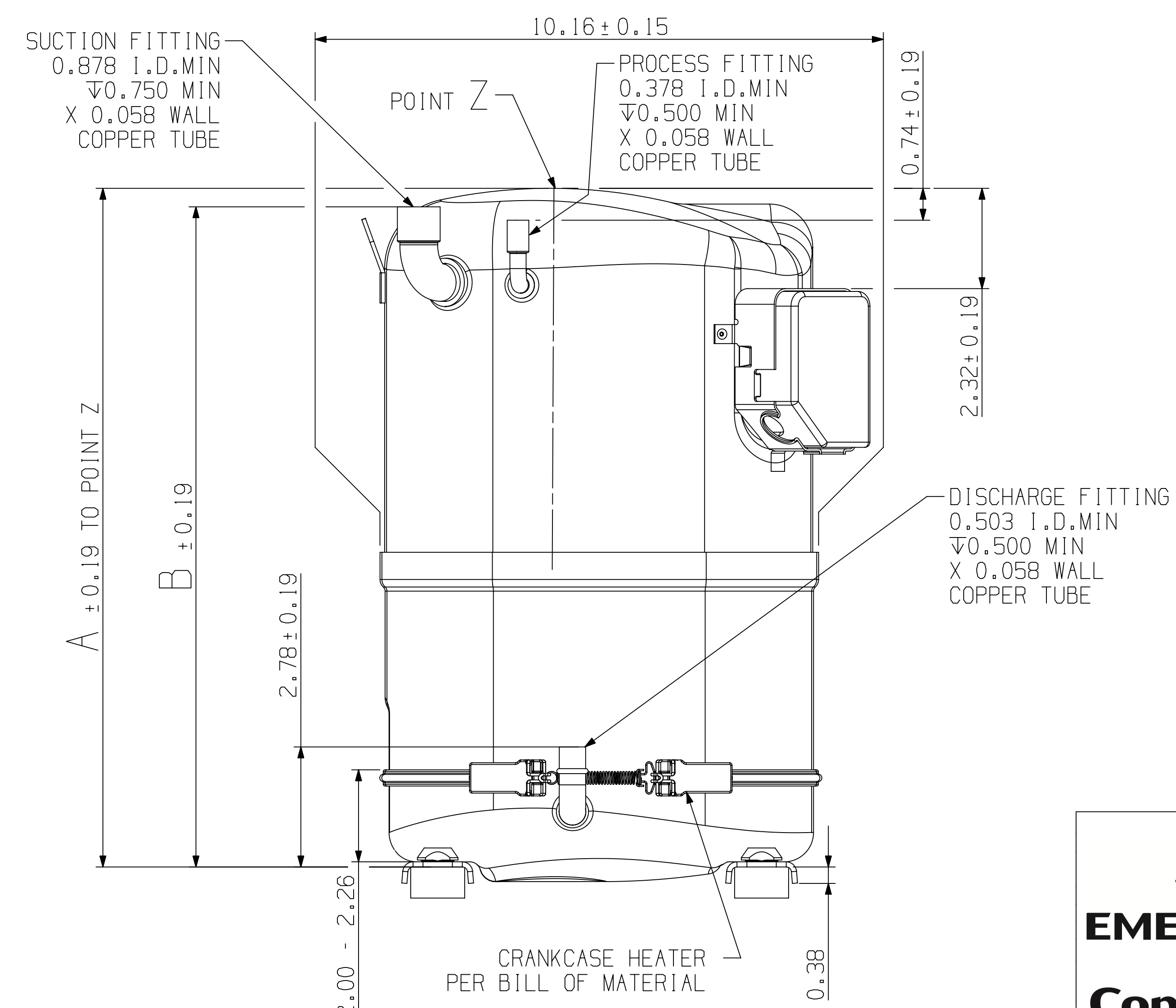
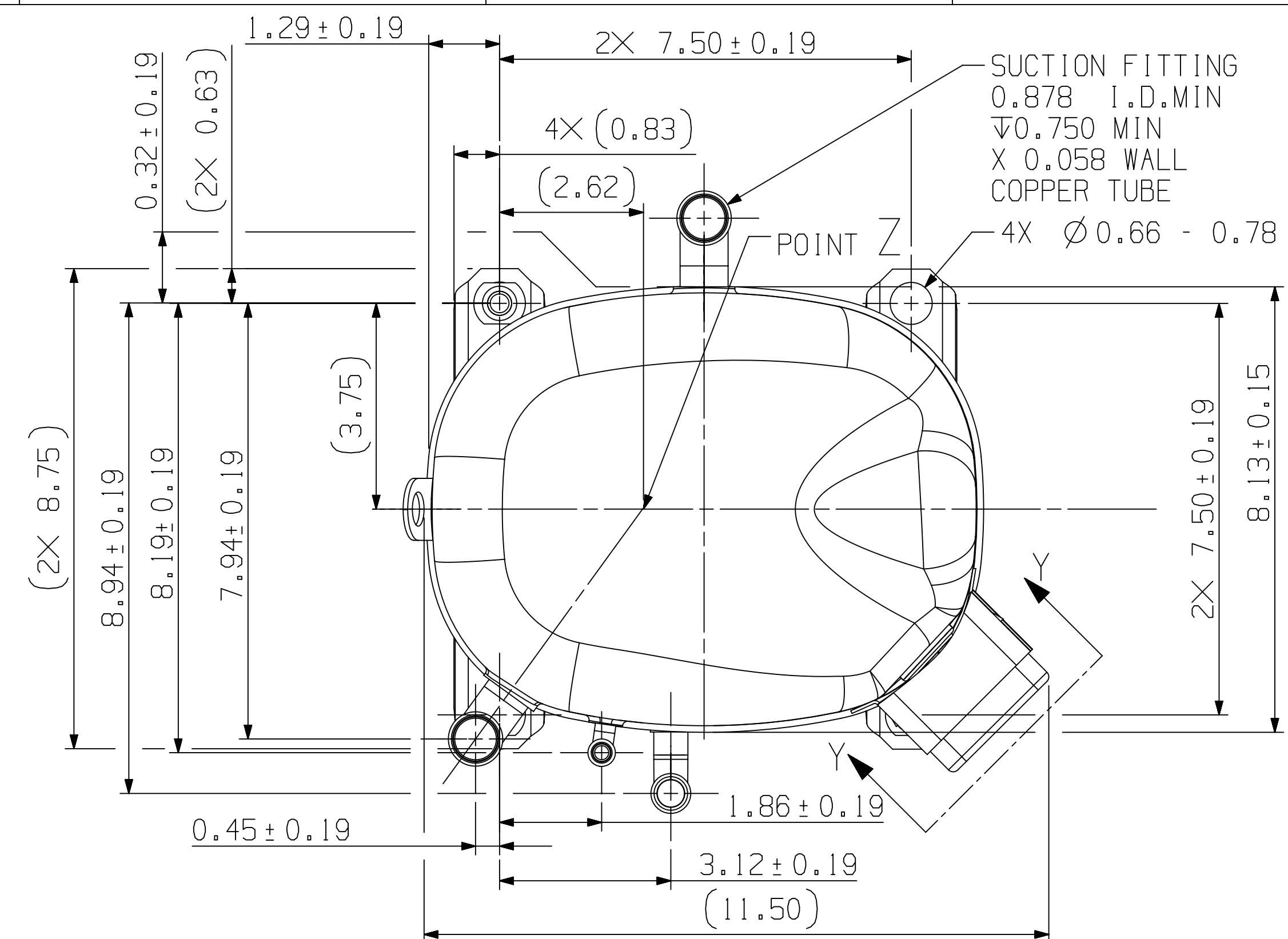


| PART NUMBER | A | B |
|-------------|--------|--------|
| 497-3804-00 | 15.717 | 15.288 |
| 497-3804-01 | 15.717 | 15.288 |
| 497-3804-02 | 15.467 | 15.038 |
| 497-3804-03 | 15.717 | 15.288 |



DUE TO ACCUMULATED ASSEMBLY TOLERANCES THE LISTED COMPONENTS MAY VARY FROM THE MOUNTING HOLES AS TABULATED

| | |
|----------------|---------|
| DISCHARGE TUBE | ± 0.125 |
| SUCTION TUBE | ± 0.187 |
| PROCESS TUBE | ± 0.187 |

| SPECIFICATIONS | |
|----------------|-----------------------|
| ES NO. | DESCRIPTION |
| ES22-122 | PACKAGING |
| ES81-159 | CLEANLINESS |
| ES81-250 | IDENTIFICATION |
| ES92-167 | REGULATORY COMPLIANCE |

- NOTES:
- TOLERANCES TO BE ± 0.12 UNLESS OTHERWISE SPECIFIED.
 - TUBE ENDS MUST BE PLUGGED.
 - SERVICE KIT SHIPS WITH THE MODEL. BOXED KIT INCLUDES: MOUNTING PARTS, CRANKCASE HEATER, T-BLOCK AND SCREWS.
 - CAPACITOR AND RELAY ASSEMBLY SHIPS WITH MODEL.

| MODEL/PART CROSS REF | | | |
|----------------------|-------------------------|-------------------------|-------------------------|
| MODEL NUMBER | PART NUMBER FOR SE -970 | PART NUMBER FOR SE -556 | PART NUMBER FOR SE -976 |
| CRNQ-0500-PFV | | | |
| CRNQ-0500-TF5 | | | |
| CRNQ-0500-TFD | | | |
| CRNQ-0500-TFE | | | |
| CRNQ-050E-PFV | | 497-3804-01 | |
| CRNQ-050E-TF5 | | | 497-3804-03 |
| CRNQ-050E-TFD | | | |
| CRNQ-050E-TFE | | | |
| CRN5-0500-PFV | | -- | |
| CRN5-0500-TFD | | -- | |
| CRN5-0500-TFE | | -- | |
| CRN5-0500-TF5 | | -- | |
| CRPQ-045E-PFV | | | 497-3804-03 |
| CRPQ-045E-TFD | | | |
| CRPQ-045E-TFE | | | |
| CRPQ-045E-TF5 | | | |
| CR60K5-PFV | -- | | |
| CR60K5-TF5 | -- | | |
| CR60K5-TFD | -- | | |
| CR60K5E-PFV | -- | 497-3804-02 | |
| CR60K5E-TF5 | -- | | |
| CR60K5E-TFD | -- | | |
| CRP5-0450-PFV | -- | 497-3804-01 | |
| CRP5-0450-TF5 | -- | | |
| CRP5-0450-TFD | -- | 497-3804-01 | |
| CRP5-0450-TFE | -- | | |

| | | | | | |
|-----------|----|--------------------------------------|----------|-----|-----|
| ECN321167 | 10 | ADDED CR60K5E-PFV/TFD/TF5 MODEL | 06-14-22 | SAS | BAH |
| ECN308927 | 9 | REDRAWN WITH CHANGES AND RELEASE -03 | 10-09-18 | SPC | BAH |
| ECN002583 | 0 | RELEASED | 08-16-10 | KRB | BAH |

| | | | | | |
|---|----------------|----------------------------|----------|-------|-------------|
| ENG NOTICE NO. | REV. NO. | REVISIONS | DATE | BY | CHKD |
| 3 | | CONFIDENTIALITY NOTICE | | | |
| THIS DRAWING AND INFORMATION CONTAINED HEREIN ARE THE EXCLUSIVE PROPERTY OF EMERSON CLIMATE TECHNOLOGIES, INC AND/OR ITS AFFILIATES (COLLECTIVELY "EMERSON") AND SHALL BE RETURNED UPON DEMAND AND SHALL NOT BE REPRODUCED IN WHOLE OR IN PART, DISCLOSED TO ANYONE ELSE OR USED, WITHOUT THE WRITTEN CONSENT OF EMERSON. | | | | | |
| MATERIAL SPECIFICATION | DRAWN BY | SUPERSEDES DWG NO / REV NO | DATE | SCALE | DATE FORMAT |
| | SPC | 497-3804-00 / 008 | 10-09-18 | 1:2 | MM-DD-YY |
| TITLE | DRAWING NUMBER | SHEET 1 OF 2 DWG | | | |
| REF DWG-WELD COMP ASSM | 497-3804-00 | 4 | SIZE | | |

EMERSON
Copeland™

INTERPRET PER ASME Y14.5M-1994 AND EMERSON DESIGN STANDARDS DS2002

DO NOT SCALE DRAWING

CRITICAL PRODUCT CHARACTERISTICS

UNLESS OTHERWISE SPECIFIED DIMENSIONS ARE INCH OR (MILLIMETER)

TOLERANCES:
2-PLACE ± N/A
3-PLACE ± N/A
ANGULAR ± N/A

© COPYRIGHT EMERSON CLIMATE TECHNOLOGIES, INC. - CONFIDENTIAL

8

7

6

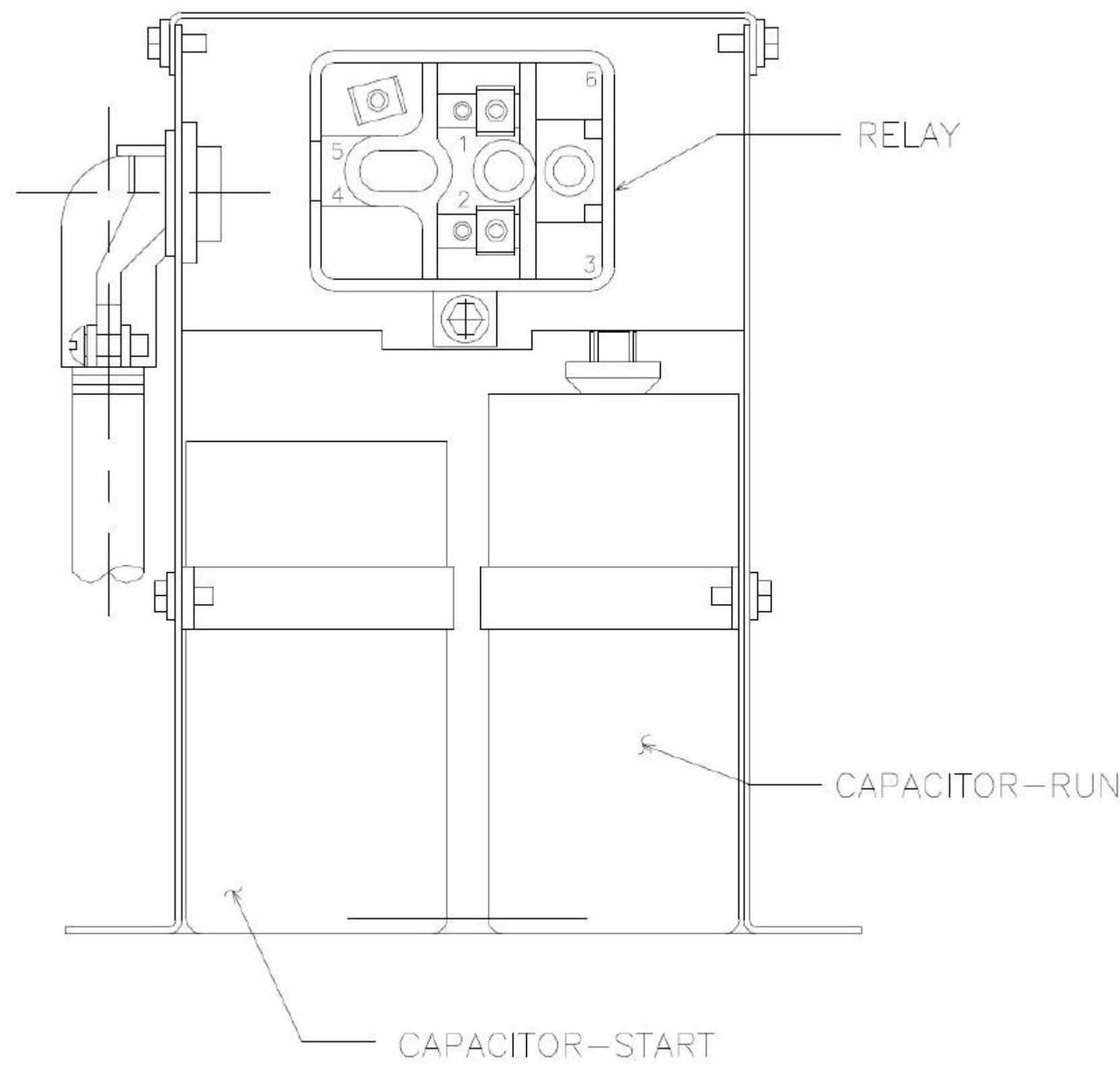
5

4

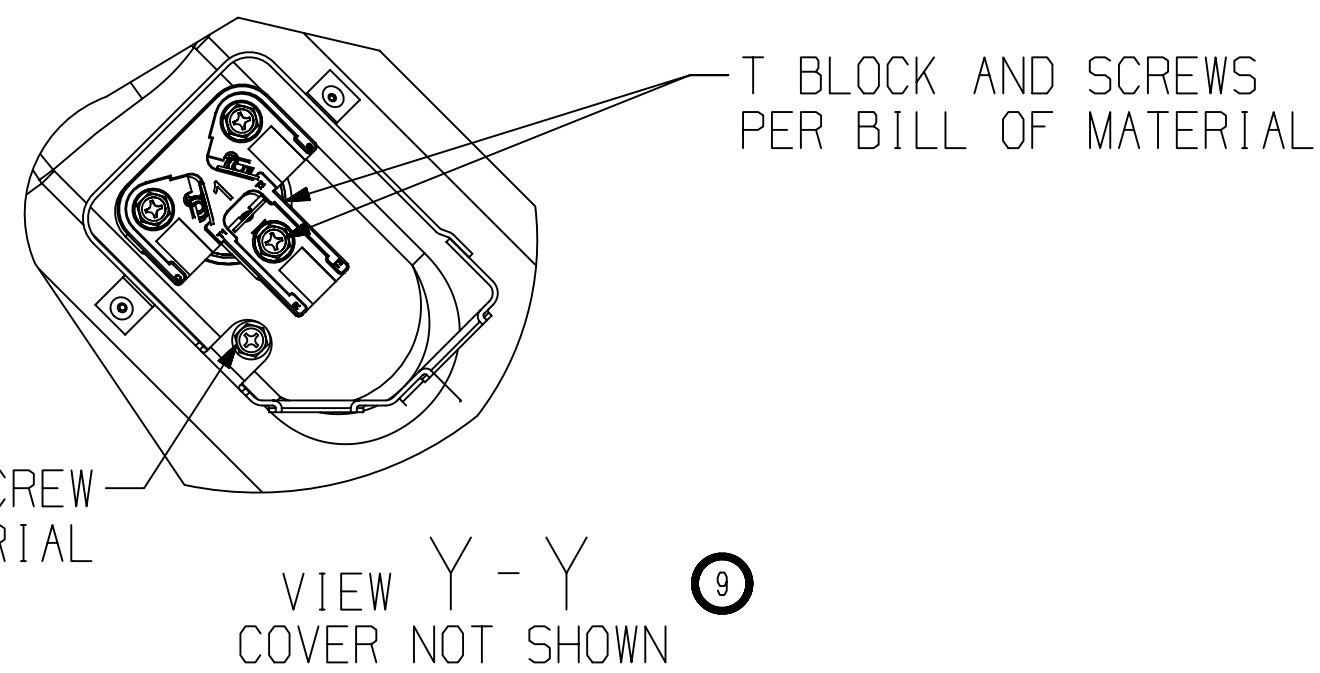
3

2

1



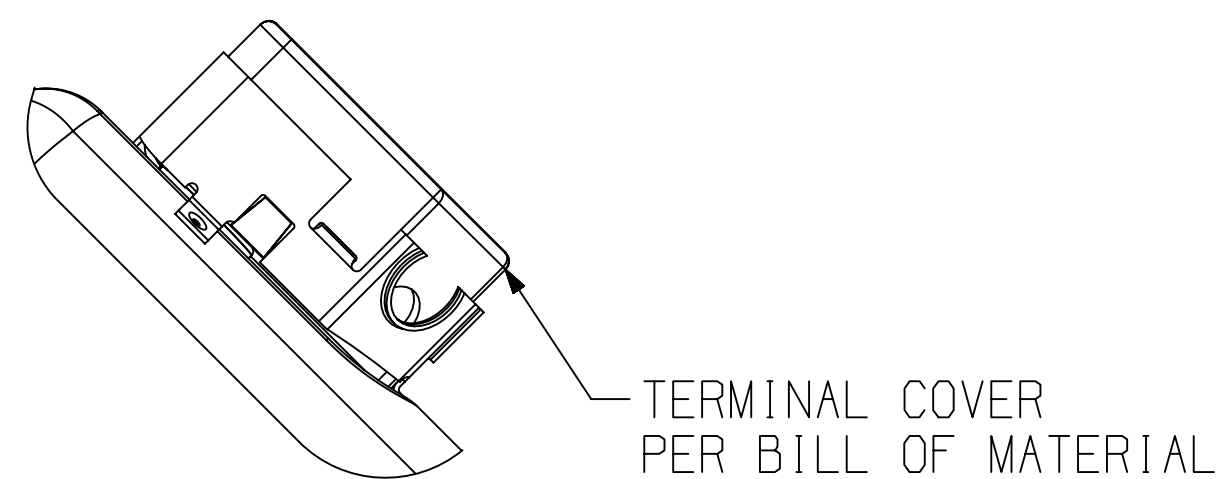
514-2000 SERIES CAPACITOR AND RELAY ASSEMBLY
OFFERED ON -976 MODELS



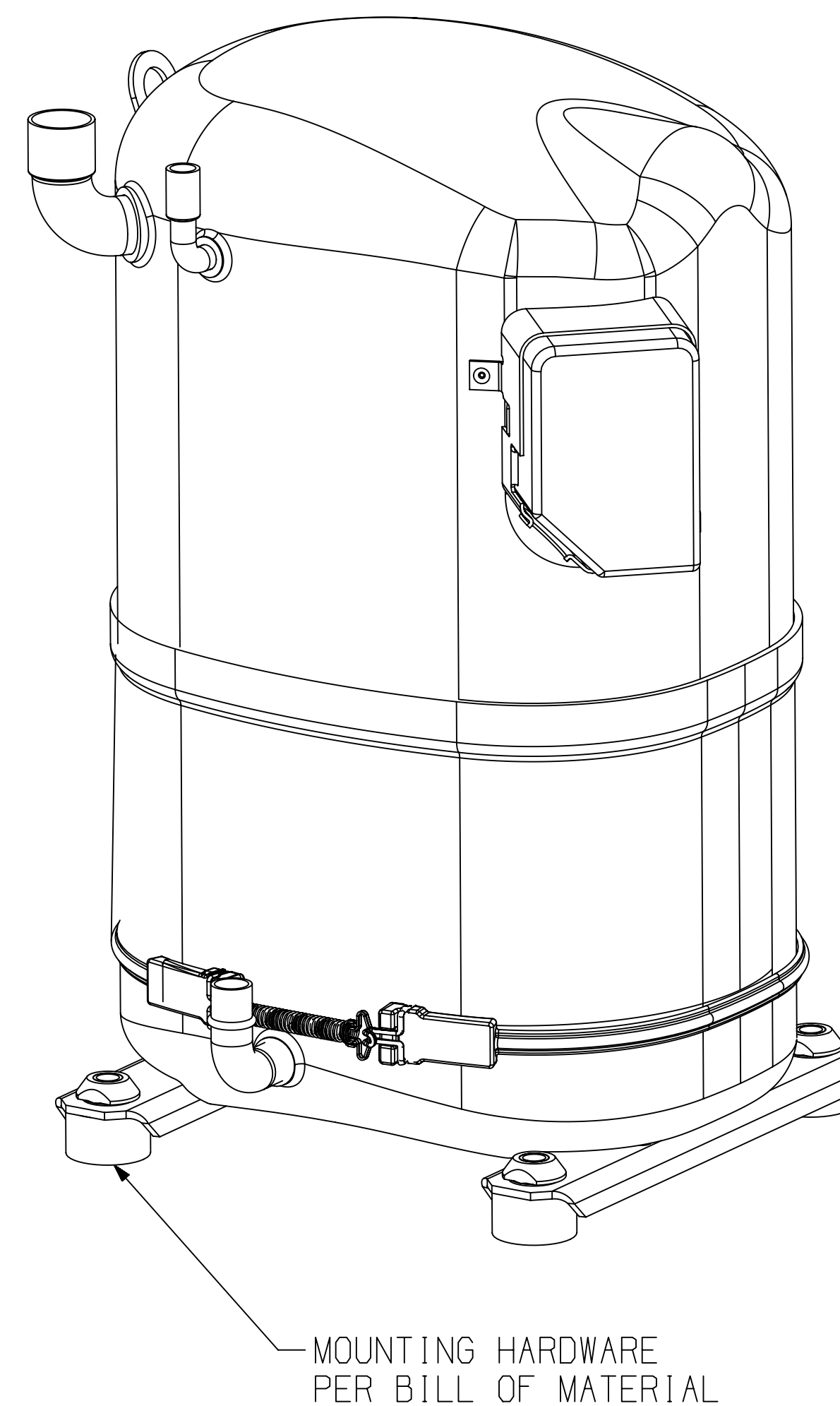
GROUNDING SCREW
PER BILL OF MATERIAL

T BLOCK AND SCREWS
PER BILL OF MATERIAL

VIEW Y-Y
COVER NOT SHOWN



TERMINAL COVER
PER BILL OF MATERIAL



MOUNTING HARDWARE
PER BILL OF MATERIAL

| ENG NOTICE NO. | REV. NO. | REVISIONS | DATE | BY | CHKD |
|----------------|----------|---------------|----------|-----|------|
| ECN321167 | 10 | SEE SHEET 1 | 06-14-22 | SAS | BAH |
| ECN308927 | 9 | ADDED SHEET 2 | 10-09-18 | SPC | BAH |
| ECN002583 | 0 | RELEASED | 08-16-10 | KRB | BAH |

3 THIS DRAWING AND INFORMATION CONTAINED HEREIN ARE THE EXCLUSIVE PROPERTY OF EMERSON CLIMATE TECHNOLOGIES, INC AND/OR ITS AFFILIATES (COLLECTIVELY "EMERSON") AND SHALL BE RETURNED UPON DEMAND AND SHALL NOT BE REPRODUCED IN WHOLE OR IN PART, DISCLOSED TO ANYONE ELSE OR USED, WITHOUT THE WRITTEN CONSENT OF EMERSON.



INTERPRET PER ASME
Y14.5M-1994 AND
EMERSON DESIGN
STANDARDS DS2002

DO NOT SCALE DRAWING

CRITICAL PRODUCT CHARACTERISTICS

UNLESS OTHERWISE SPECIFIED
DIMENSIONS ARE INCH OR (MILLIMETER)

TOLERANCES:
2-PLACE ± N/A
3-PLACE ± N/A
ANGULAR ± N/A

| MATERIAL SPECIFICATION | DRAWN BY | SUPERSEDES DWG NO / REV NO |
|------------------------|----------------|----------------------------|
| | SPC | 497-3804-00 / 008 |
| | DATE | SCALE DATE FORMAT |
| | 10-09-18 | 1:2 MM-DD-YY |
| TITLE | DRAWING NUMBER | SHEET 2 OF 2 DWG |
| REF DWG-WELD COMP ASSM | 497-3804-00 | 4 |
| | SIZE | |