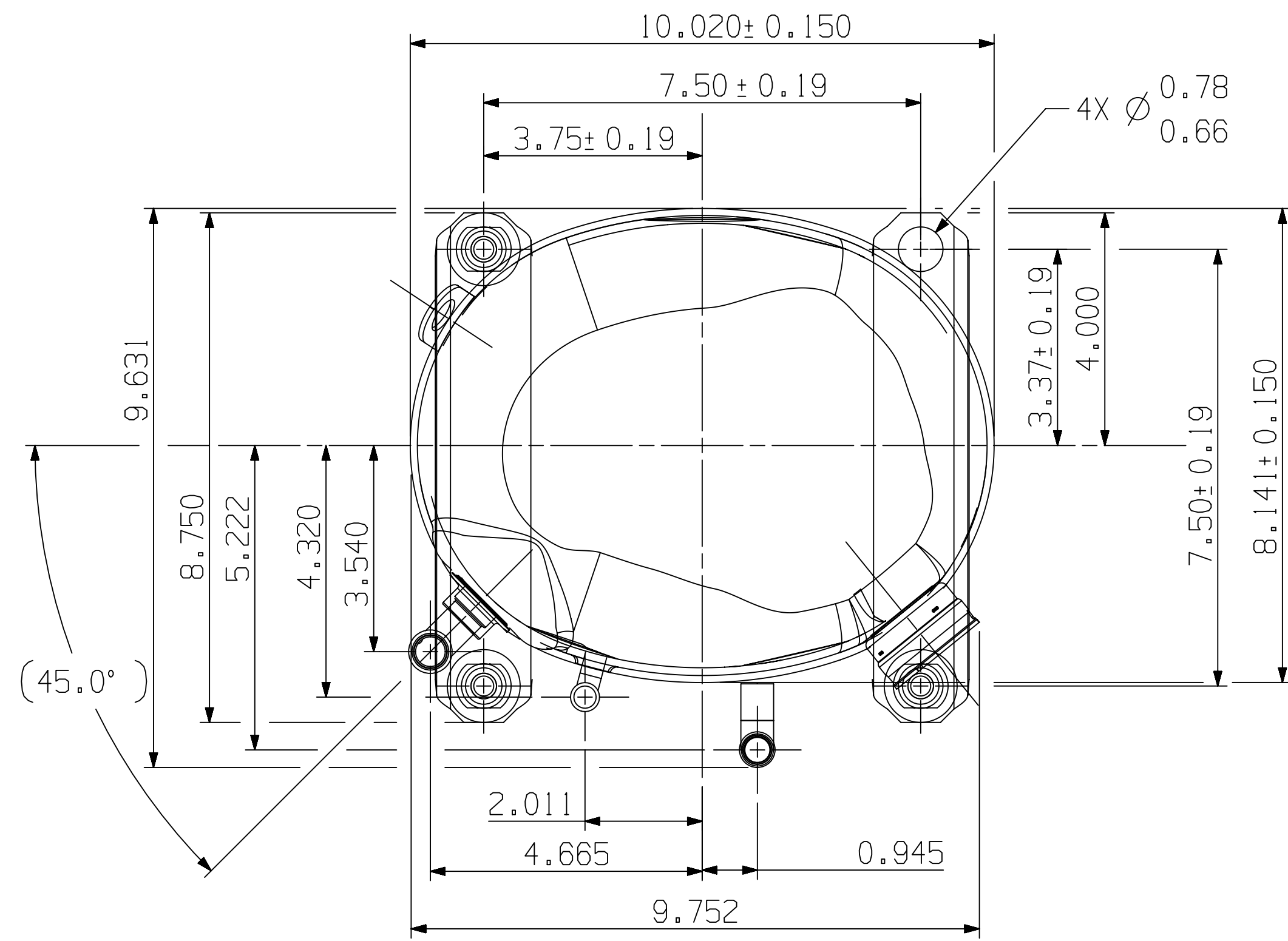


△ PART NUMBER	A	B
497-3817-00	13.655	13.296
497-3817-01	13.405	13.046
497-3817-02	13.035	12.676
497-3817-03	13.905	13.546
497-3817-04	12.905	12.546
497-3817-05	14.405	14.046
497-3817-06	13.035	12.676
497-3817-07	12.905	12.546
497-3817-08	13.905	13.546
497-3817-09	13.405	13.046
497-3817-10	13.655	13.296
497-3817-11	14.405	14.046



DUE TO ACCUMULATED ASSEMBLY TOLERANCES THE LISTED COMPONENTS MAY VARY FROM THE MOUNTING HOLES AS TABULATED

DISCHARGE TUBE	± 0.125
SUCTION TUBE	± 0.187
PROCESS TUBE	± 0.187

SPECIFICATIONS	
ES NO.	DESCRIPTION
ES22-122	PACKAGING
ES81-159	CLEANLINESS
ES81-250	IDENTIFICATION
ES92-167	REGULATORY COMPLIANCE

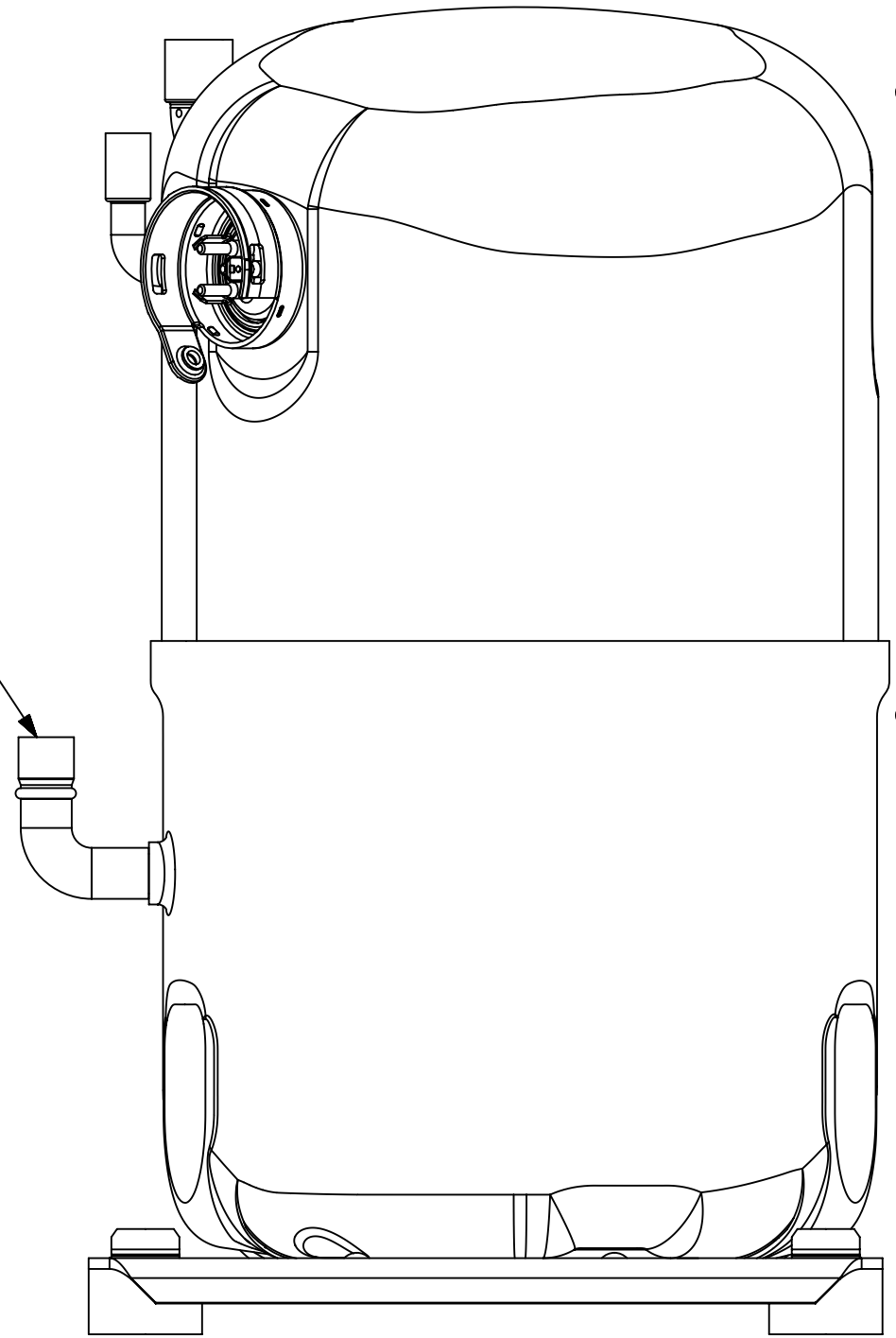
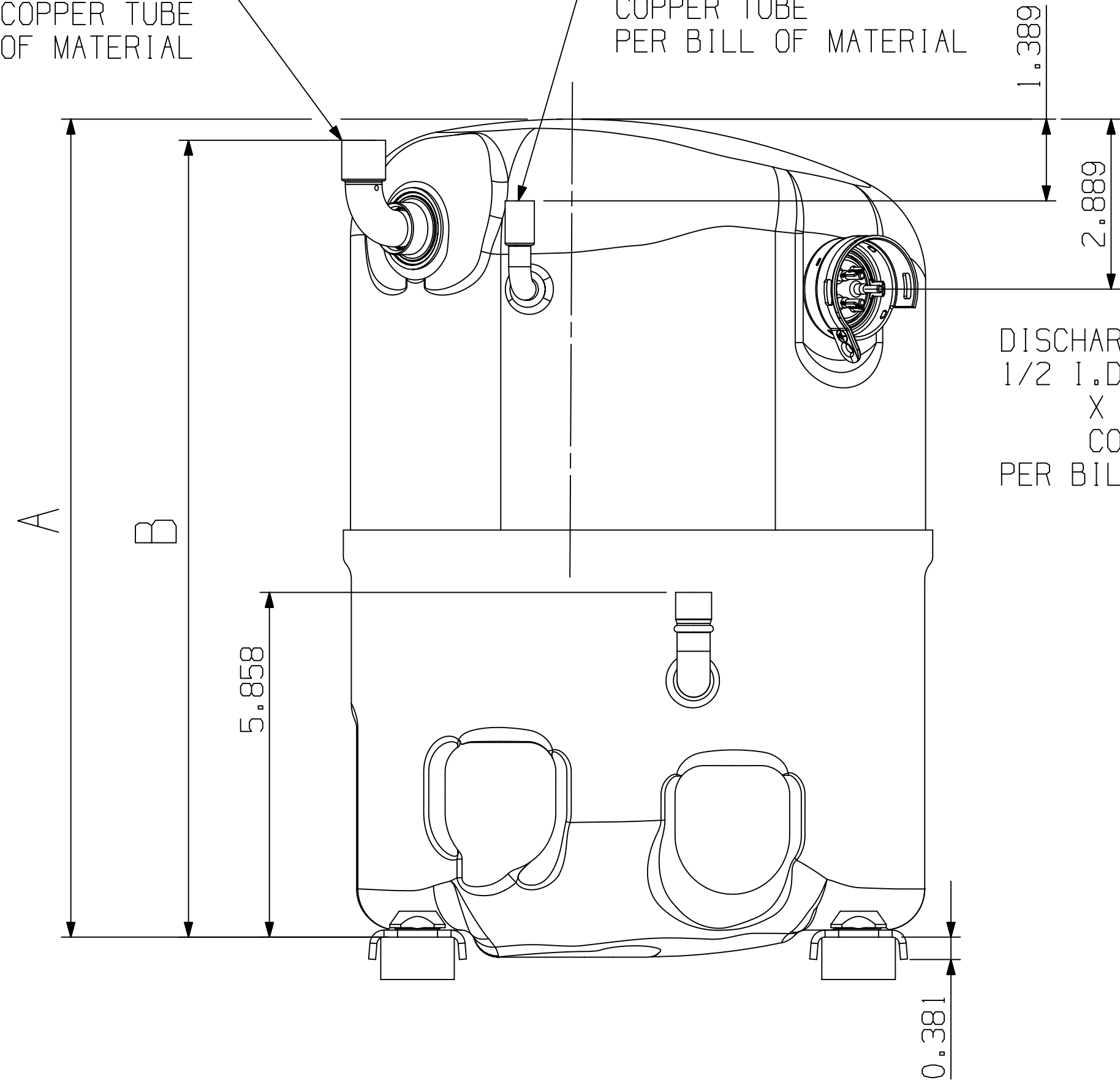
MODEL/PART CROSS REF △ ₃		
MODEL NUMBER	PART NUMBER FOR SE - 155	PART NUMBER FOR SE - 655
CS20K6E-PFV		
CS20K6E-PFZ	497-3817-00	497-3817-10
CS20K6E-TF5		
CS13K6E-PFZ		
CS13K6E-TF5		
CS16K6E-PFZ		
CS16K6E-TF5	497-3817-01	497-3817-09
CS18K6E-PFJ		
CS18K6E-PFV		
CS18K6E-TF5		
CS18K6E-TFD		
CS14K6E-PFJ		
CS14K6E-PFV	497-3817-02	497-3817-06
CS14K6E-TF5		
CS13K6E-PFV		
CS16K6E-PFV	497-3817-03	497-3817-08
CS10K6E-PFJ		
CS10K6E-PFV		497-3817-07
CS10K6E-TFD		
CS10K6E-TF5	497-3817-04	
CS12K6E-PFJ		497-3817-07
CS12K6E-PFV		
CS12K6E-TF5		
CS24K6E-PFV		
CS24K6E-PFZ	497-3817-05	497-3817-11
CS24K6E-TF5		
CS27K6E-TF5		

NOTES:
 1. TOLERANCES TO BE ±0.12 UNLESS OTHERWISE SPECIFIED.
 2. TUBE ENDS MUST BE PLUGGED
 △₃ FOR MODEL APPLICATION REFER TO CHART

SUCTION FITTING
 5/8 I.D. ∇ 5/8 MIN
 X 0.058 WALL
 COPPER TUBE
 PER BILL OF MATERIAL

PROCESS FITTING
 3/8 I.D. ∇ 1/2 MIN
 X 0.058 WALL
 COPPER TUBE
 PER BILL OF MATERIAL

DISCHARGE FITTING
 1/2 I.D. ∇ 1/2 MIN
 X 0.062 WALL
 COPPER TUBE
 PER BILL OF MATERIAL



INTERPRET PER ASME Y14.5M-1994 AND EMERSON DESIGN STANDARDS DS2002

DO NOT SCALE DRAWING

CRITICAL PRODUCT CHARACTERISTICS

UNLESS OTHERWISE SPECIFIED DIMENSIONS ARE INCH OR (MILLIMETER)

TOLERANCES:
 2-PLACE : N/A
 3-PLACE : N/A
 ANGULAR : N/A

ENG NOTICE NO.	REV. NO.	REVISIONS	DATE	BY	CHKD
ECN323629	8	CS18K6E-TFD & CS27K6E-TF5 RELEASED	03-22-23	JM	TAM
ECN308624	7	REDRAWN WITH CHANGES	08-31-18	SPC	BAH
ECN003458	0	RELEASED	02-23-11	KRB	BAH

3 THIS DRAWING AND INFORMATION CONTAINED HEREIN ARE THE EXCLUSIVE PROPERTY OF EMERSON CLIMATE TECHNOLOGIES, INC AND/OR ITS AFFILIATES (COLLECTIVELY "EMERSON") AND SHALL BE RETURNED UPON DEMAND AND SHALL NOT BE REPRODUCED IN WHOLE OR IN PART, DISCLOSED TO ANYONE ELSE OR USED, WITHOUT THE WRITTEN CONSENT OF EMERSON.

TITLE	DRAWING NUMBER	SHEET 1 OF 1 DWG
REF DWG-WELDED COMP ASSM	497-3817-00	4