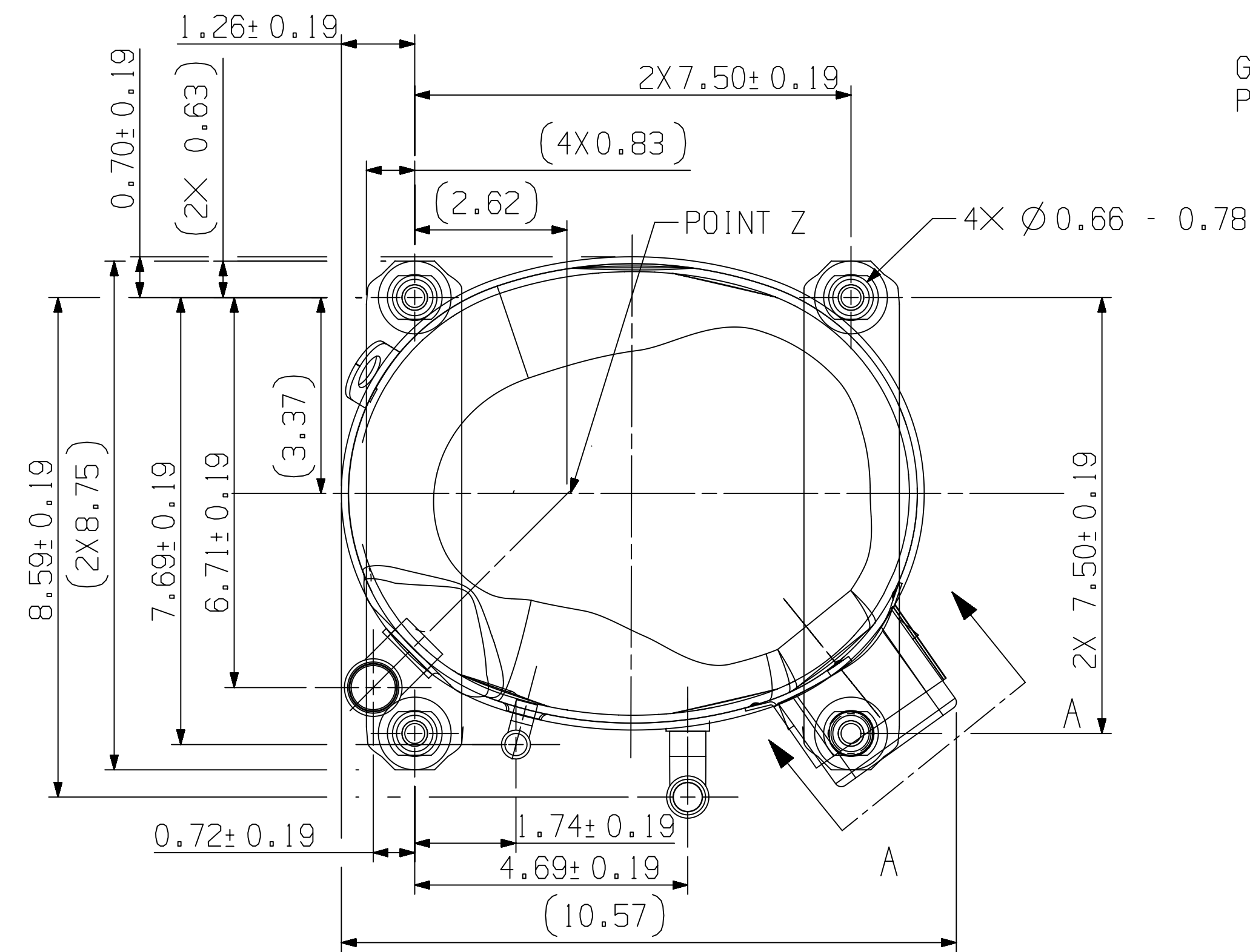
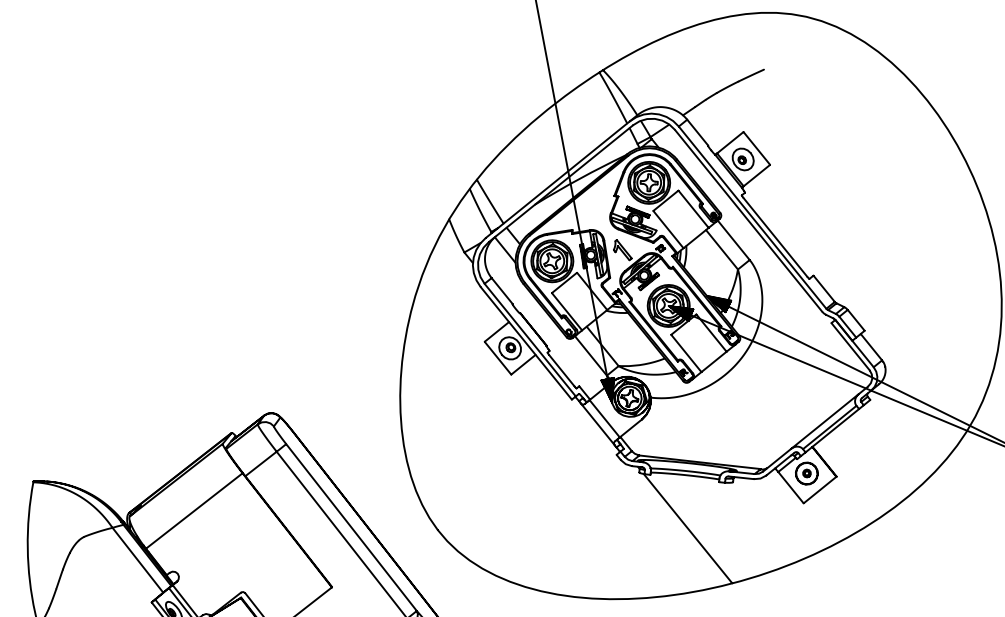


SPECIFICATIONS	
ES NO.	DESCRIPTION
ES22-122	PACKAGING
ES81-159	CLEANLINESS
ES81-250	IDENTIFICATION
ES92-155	CONVERSION-METRIC
ES92-167	REGULATORY COMPLIANCE



GROUNDING SCREW
PER BILL OF MATERIAL



SECTION A - A

TERMINAL COVER
PER BILL OF MATERIAL

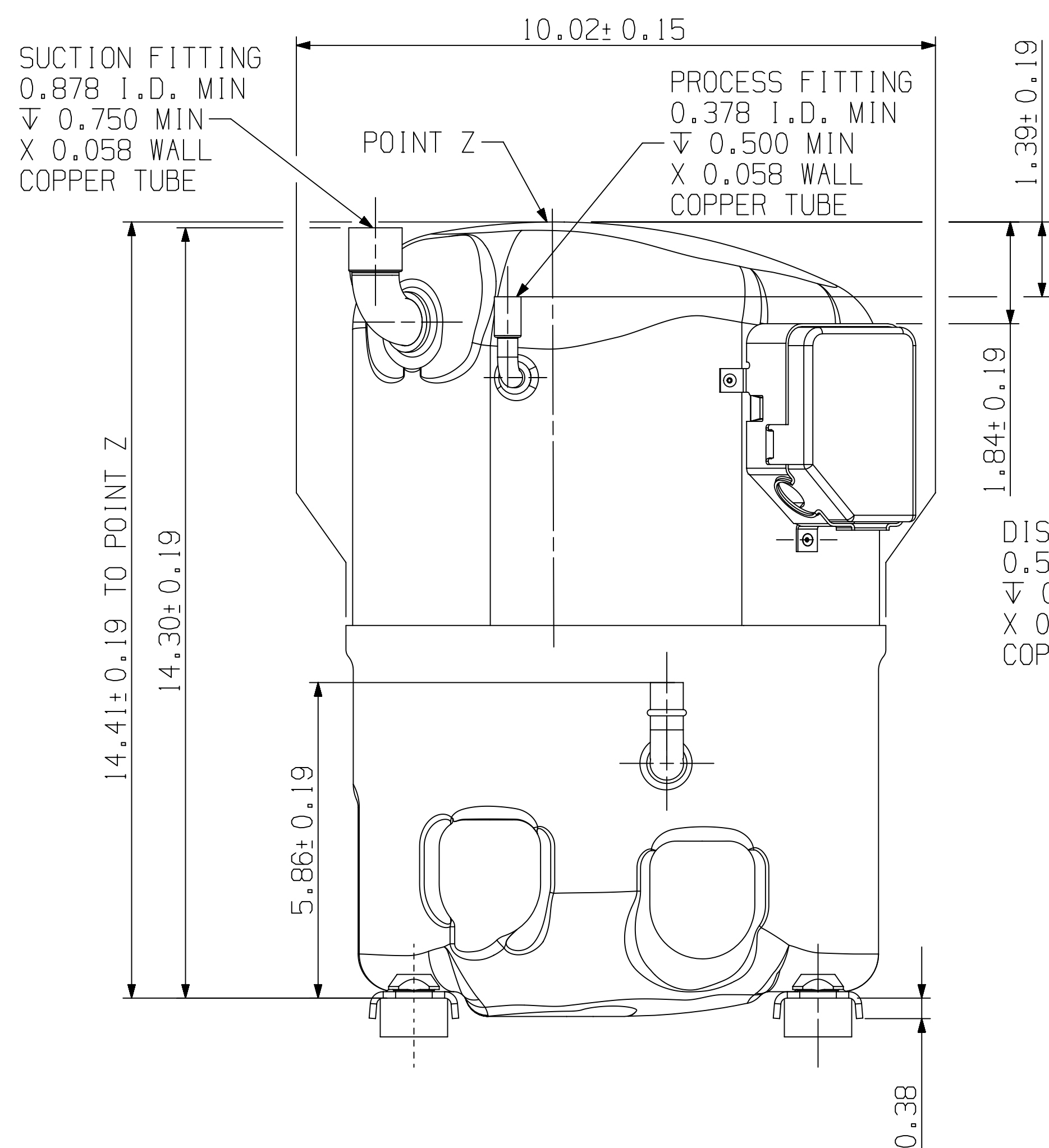
NOTES:

1. TOLERANCES TO BE ± 0.12 UNLESS OTHERWISE SPECIFIED.

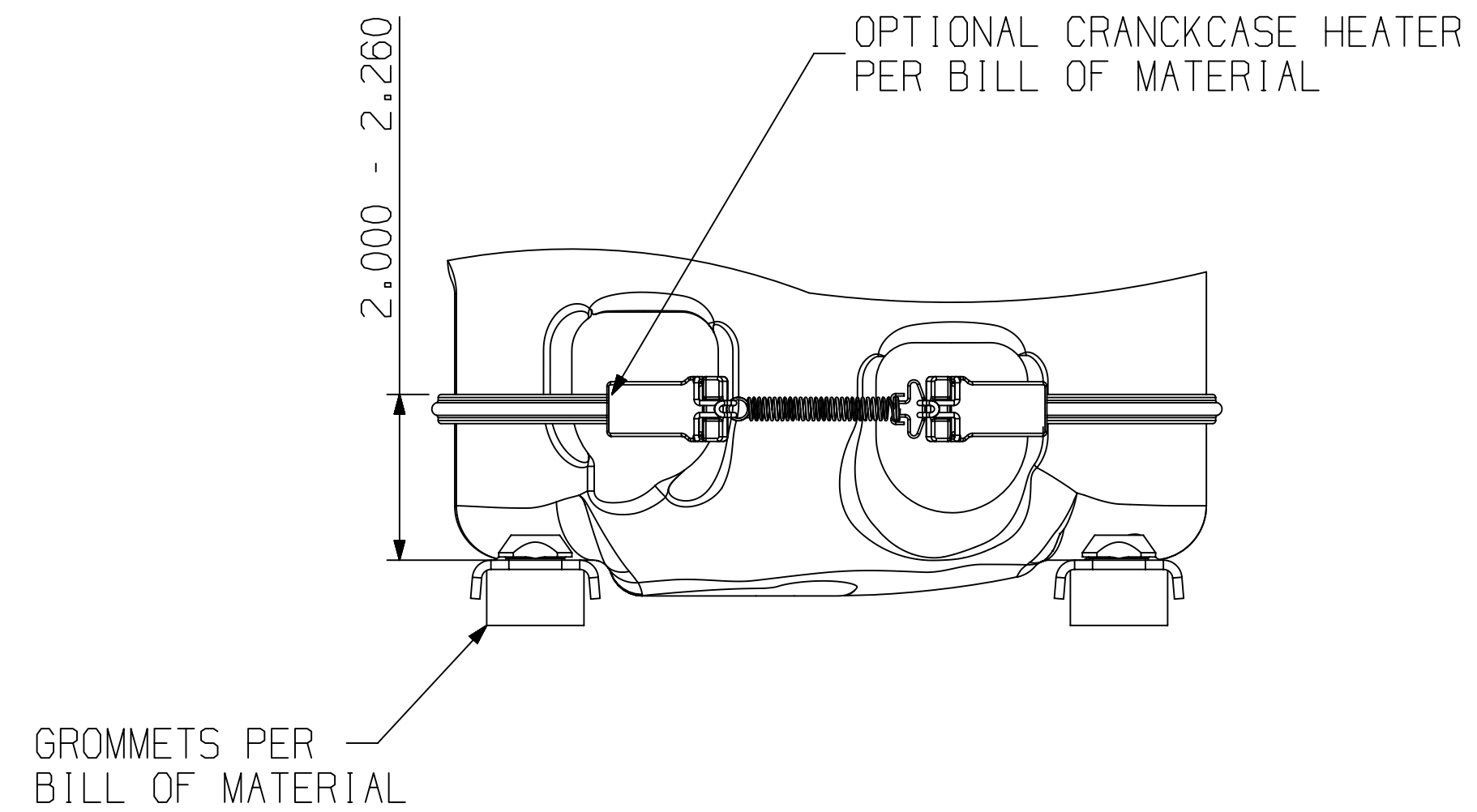
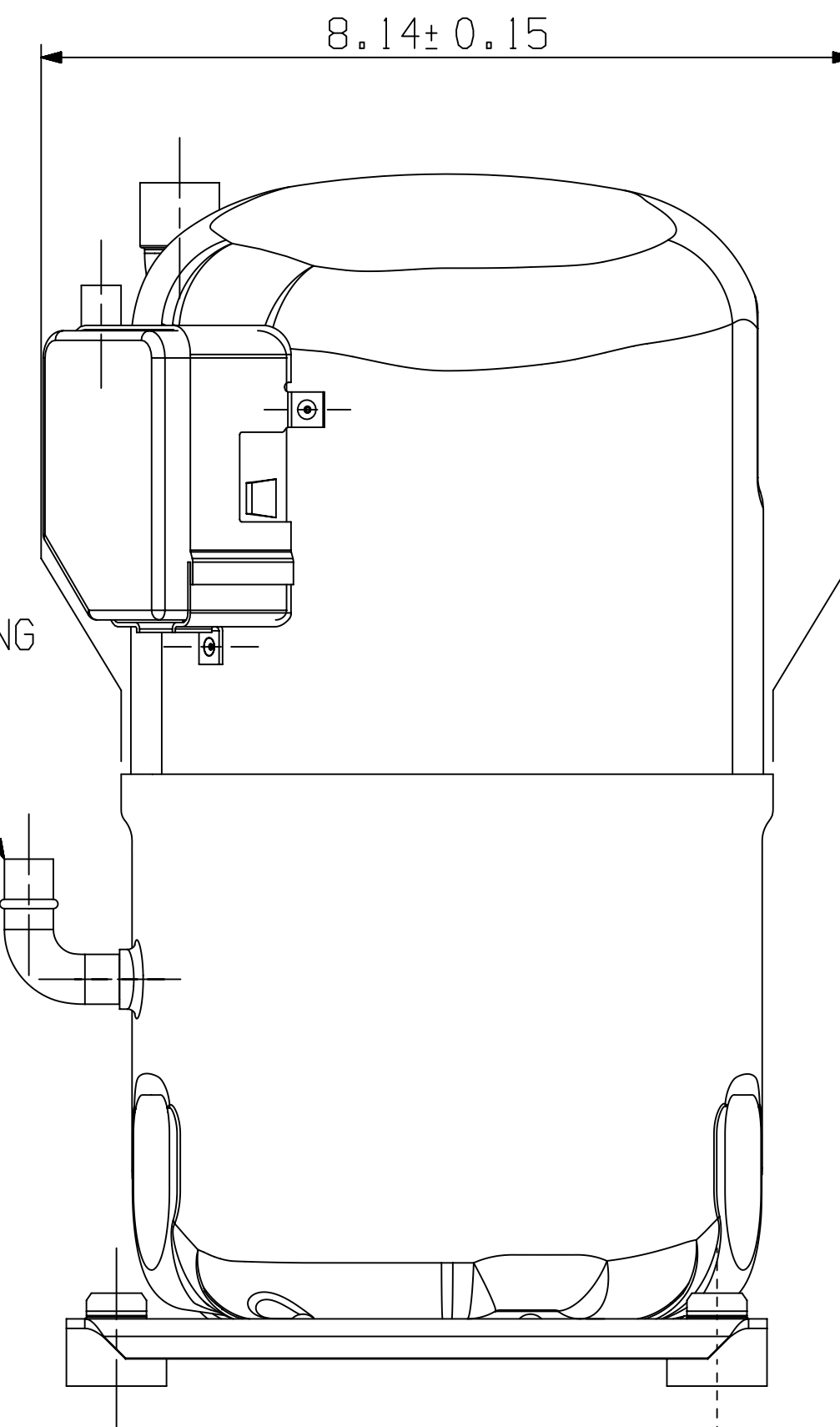
2. TUBE ENDS MUST BE PLUGGED.

3. FOR MODEL APPLICATION REFER TO CHART

MODEL / PART CROSS REF ³		
MODEL NUMBER	PART NUMBER FOR SE -256	PART NUMBER FOR SE -556/-956 ⁴
CS33K6E-PFV	497-3820-00	497-3820-01
CS33K6E-TF5		
CS33K6E-TFD		
CS33K6E-TFE		



DISCHARGE FITTING
0.503 I.D. MIN
∇ 0.500 MIN
X 0.058 WALL
COPPER TUBE



497-3820-01
OPTIONAL VIEW



INTERPRET PER ASME
Y14.5M-1994 AND
EMERSON DESIGN
STANDARDS DS2002

DO NOT SCALE DRAWING

CRITICAL PRODUCT CHARACTERISTICS

UNLESS OTHERWISE SPECIFIED
DIMENSIONS ARE INCH OR (MILLIMETER)
TOLERANCES:
2-PLACE ± 0.015
3-PLACE ± 0.005
ANGULAR ± 0.5°

ECN	REV.	DESCRIPTION	DATE	BY	CHKD
ECN323629	4	CS33K6E-TFE RELEASED	03-29-23	JM	TAM
ECN003458	0	RELEASED	02-23-11	KRB	BAH

ENG NOTICE NO.	REV.NO.	REVISIONS	DATE	BY	CHKD
3		CONFIDENTIALITY NOTICE			

TITLE	DRAWING NUMBER	SHEET 1 OF 1 DWG
REF DWG - WELD COMP ASSM	497-3820-00	4