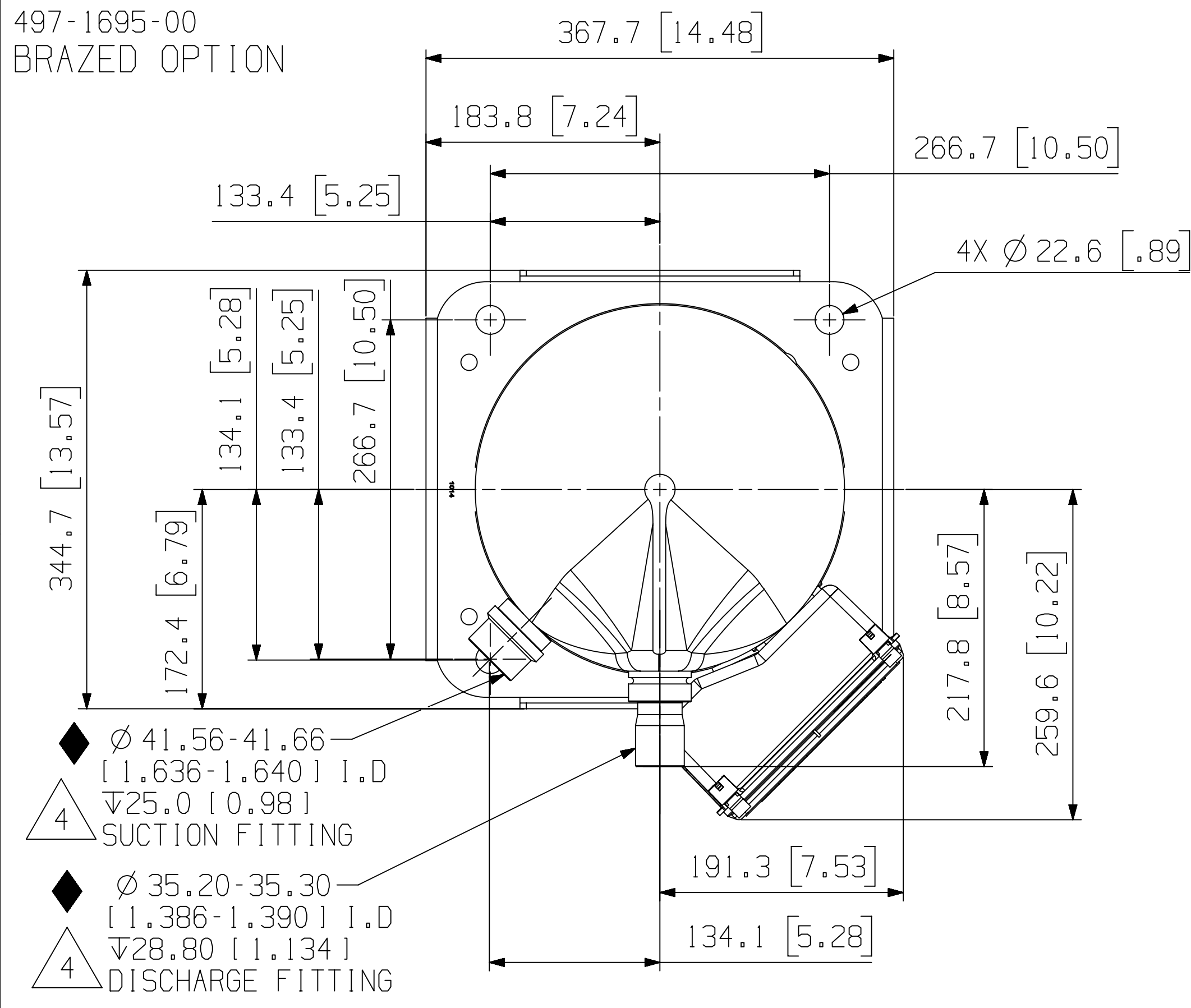
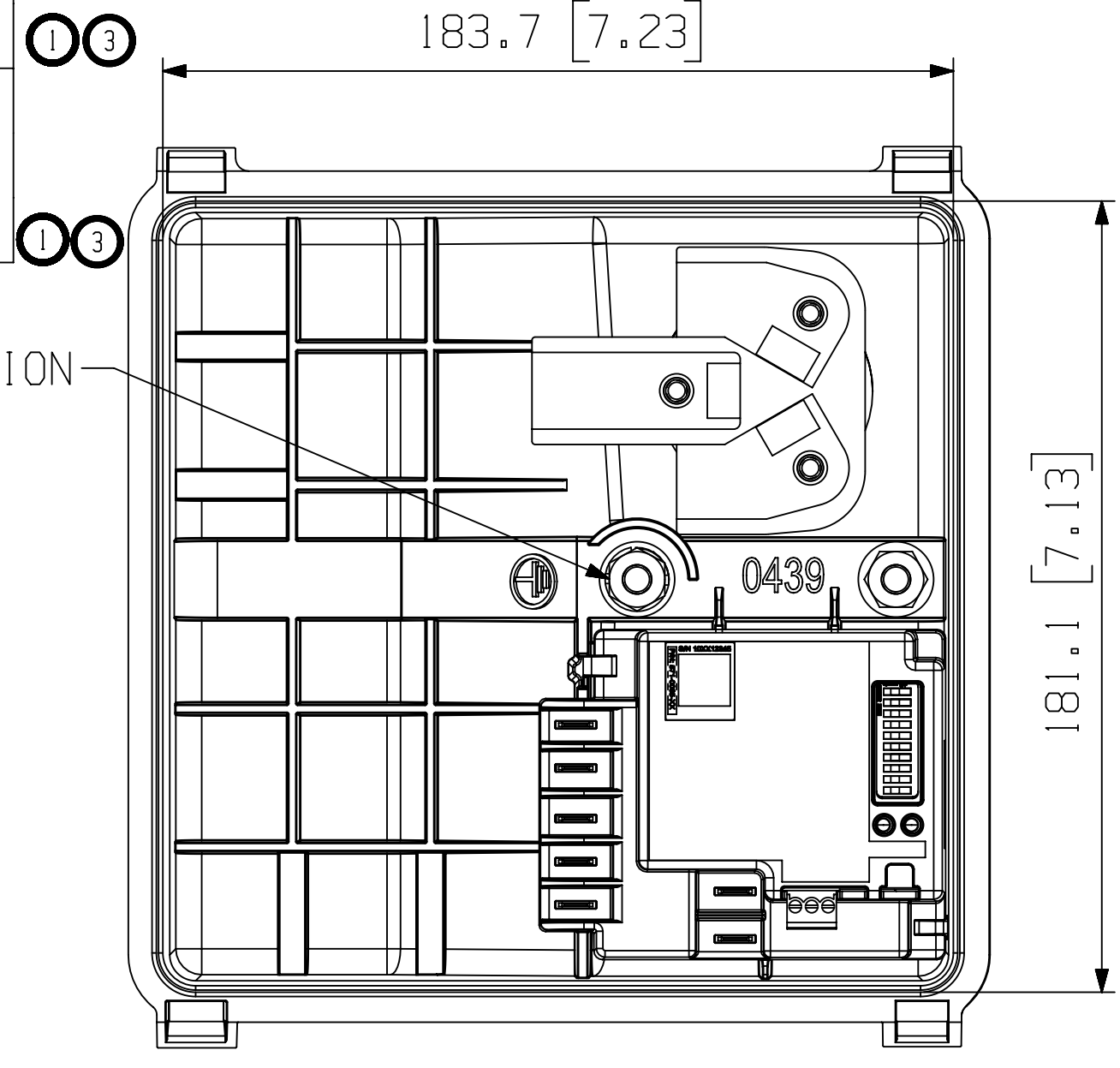
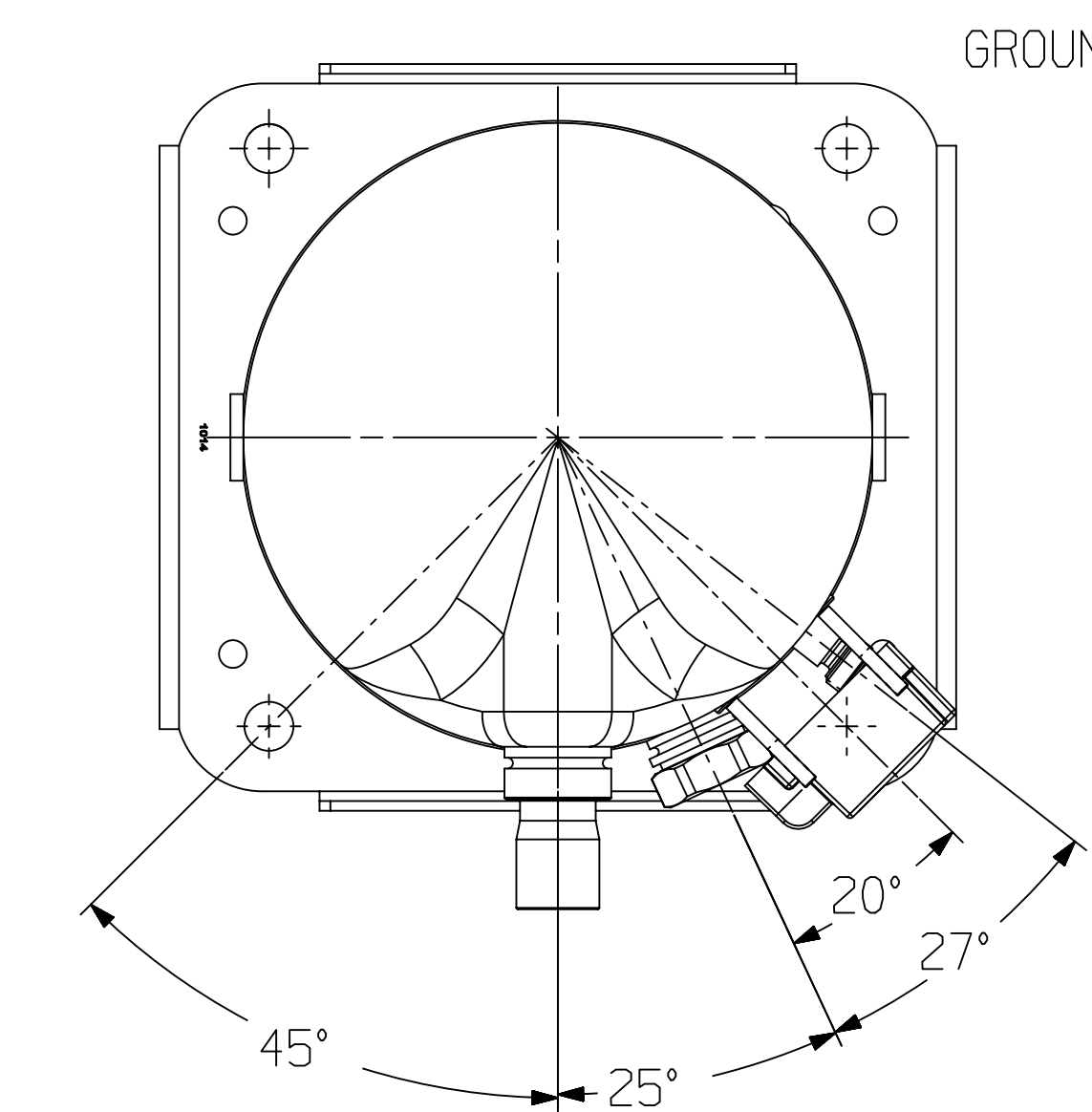


497-1695-00  
BRAZED OPTION



- ◆  $\varnothing 41.56-41.66$   
[1.636-1.640] I.D  
 $\nabla 25.0$  [0.98]  
SUCTION FITTING
- ◆  $\varnothing 35.20-35.30$   
[1.386-1.390] I.D  
 $\nabla 28.80$  [1.134]  
DISCHARGE FITTING

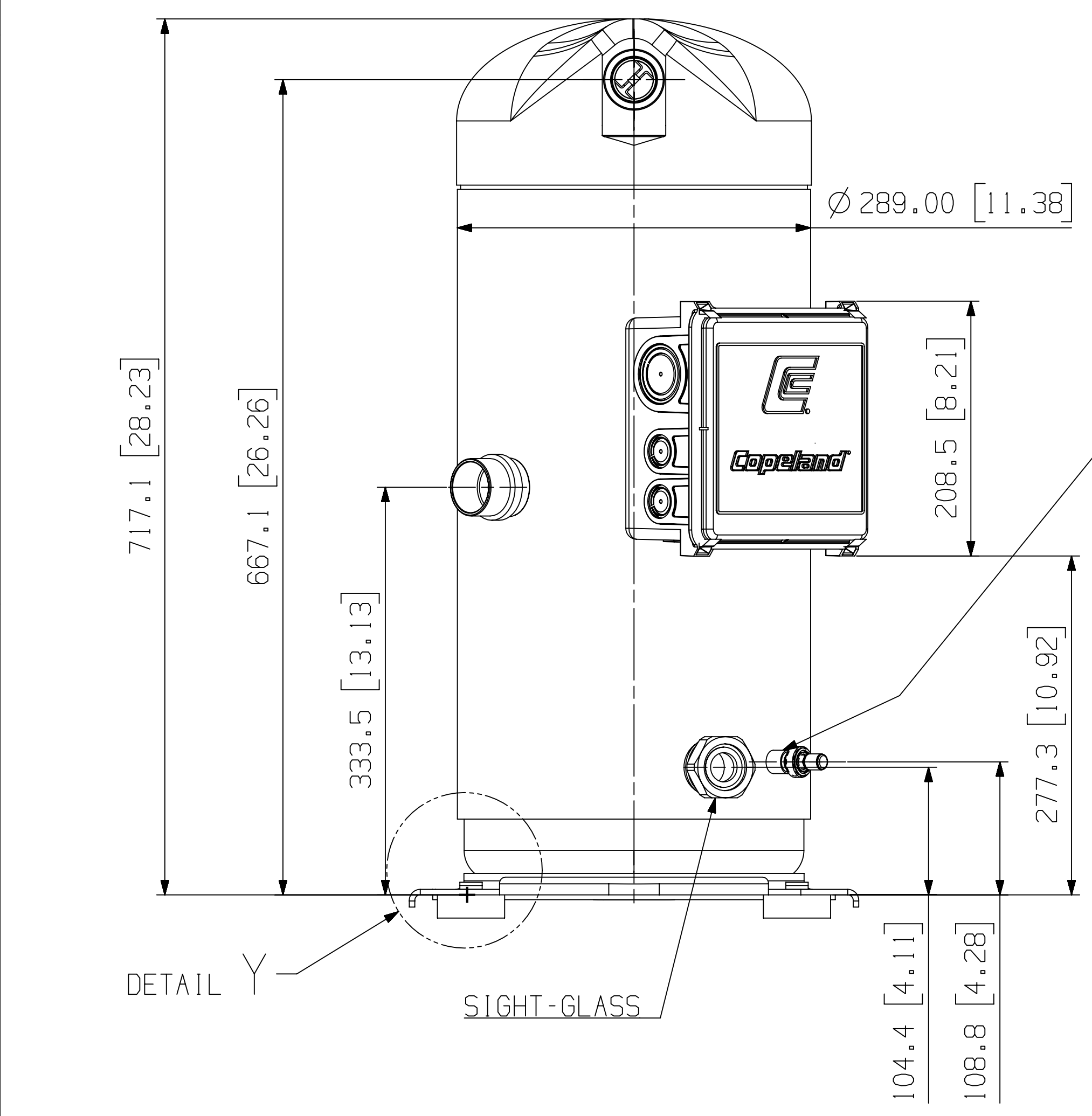
PART NUMBER	MODEL NUMBER	CUSTOMER CONNECTIONS
497-1695-00	ZR250KC/KCE	BRAZED
	ZP235KCE	
	ZH100KCE/ZH101KCE	
497-1695-01	ZR250KC/KCE	ROTALOCK
	ZP235KCE	
	ZH100KCE/ZH101KCE	



- NOTES:
- 1 ALL TOLERANCES  $\pm 1.50$  [0.060] UNLESS OTHERWISE SPECIFIED.
  - 2 DUE TO ACCUMULATED ASSEMBLY TOLERANCES THE LISTED COMPONENTS MAY VARY FROM THE MOUNTING HOLES AS SHOWN BELOW :
  - ◆ ALL FITTINGS :  $\pm 3.0$  [0.12]
  - 2. MOUNTING KIT : 527-0175-02
  - 3. TUBE ENDS MUST BE PLUGGED.
  - 4 0.05 [0.002] MIN. THICK INTERIOR & EXTERIOR COPPER PLATED STEEL FITTING.

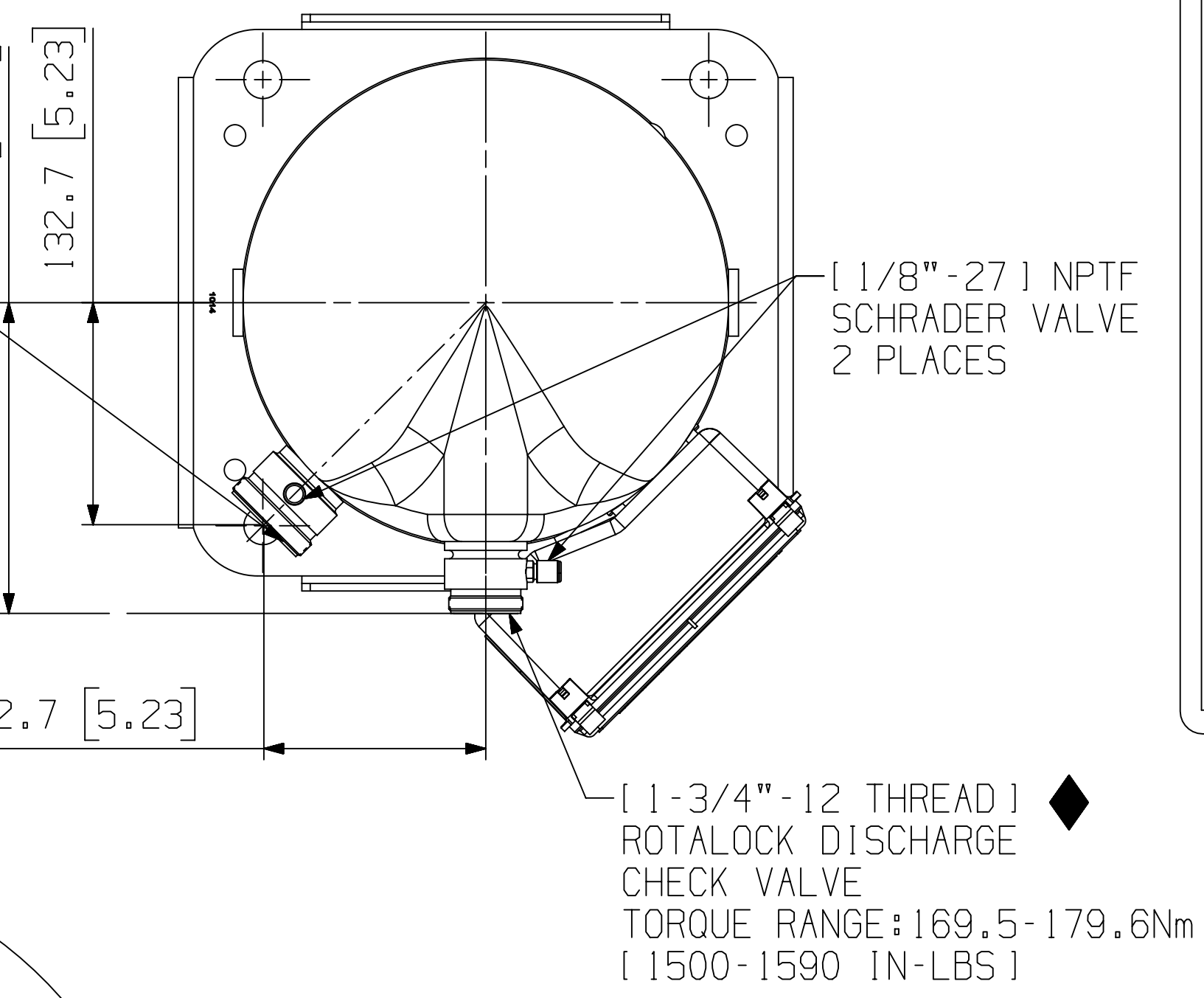
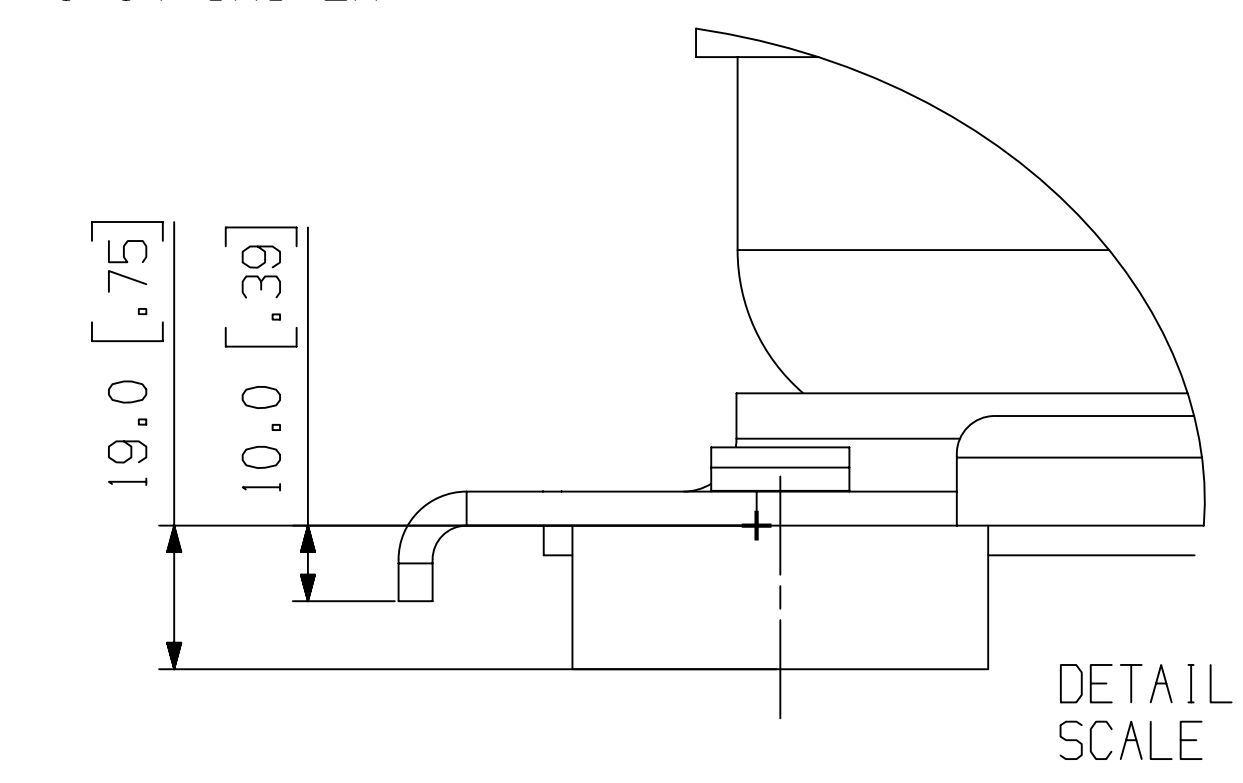
SPECIFICATIONS	
ES NO.	DESCRIPTION
ES92-155	CONVERSION-METRIC
ES81-340	TORQUE SPEC

(VIEW W/O TERMINAL BOX) 497-1695-01 ROTALOCK OPTION



- ◆ [2-1/4"-12 UN-2A] THREAD ROTALOCK SUCTION TORQUE RANGE: 189.8-199.9Nm [1680-1770 IN-LBS]

- ◆  $\varnothing 9.60-9.78$  ID [  $\varnothing 0.378-0.385$  ]  
 $\nabla 9.40$  [0.370] MIN  
M9 X 1.25-66 $\nabla$  20.0  
FITTING DESIGNED TO ALSO ACCEPT ROTALOCK TPTL OIL EQUALIZATION LINE 1-14 UNS-2A



- ◆ [1/8"-27] NPTF SCHRADER VALVE 2 PLACES

- ◆ [1-3/4"-12 THREAD] ROTALOCK DISCHARGE CHECK VALVE TORQUE RANGE: 169.5-179.6Nm [1500-1590 IN-LBS]

ALERT CODE (RED)	TYPE	EVENT
1	SOLID	P47 LOSS OF FUNCTION
2	LOUT	MOTOR HIGH TEMPERATURE
3	LOUT	OPEN MOTOR THERMISTOR
4	LOUT/TRIP	SHORT CYCLING
5	N/A	SCROLL HIGH TEMPERATURE
6	N/A	FUTURE USE
7	LOUT/TRIP	MISSING PHASE
8	LOUT	REVERSE PHASE
9	N/A	FUTURE USE
10	TRIP	MODULE LOW VOLTAGE
WARNING (GREEN)	N/A	EVENT
1	WARNING	NORMAL OPERATION
2	WARNING	LOSS OF COMMUNICATION
3	WARNING	OPEN MOTOR THERMISTOR
4	WARNING	SHORT CYCLING
5	WARNING	OPEN SCROLL THERMISTOR
		FUTURE USE

SYMBOLS / SYMBOLES / SYMBOLE

1 PROTECTOR MODULE VOLTAGE / TENSION DU MODULE DE PROTECTION / ANSCHLUSSSPANNUNG DES SCHUTZGERÄTES

2 TO CONTROL CIRCUIT / VERS LE CIRCUIT DE COMMANDE / ZUM STEUERSTROMREIß

3 THERMAL SENSORS DO NOT SHORT / NE PAS PONTER LES CAPTEURS THERMIQUES / TEMPERATURSENSOREN NICHT ÜBERBRÜCKEN

4 PHASE SENSING / DETECTION PHASES / PHASEN ÜBERWACHUNG

USE COPPER CONDUCTORS ONLY. USE MINIMUM 75°C WIRE FOR AMPACITY DETERMINATION. USE THIS EQUIPMENT ON A GROUNDED SYSTEM ONLY. PRIMARY SINGLE PHASE FAILURE PROTECTION IS PROVIDED. PROTECTOR MODULE AND OPTIONAL CRANKCASE HEATER MUST BE CONNECTED ONLY TO THEIR RATED VOLTAGE. OVERCURRENT PROTECTION DEVICE RATING AND TYPE MUST BE IN ACCORDANCE WITH REGULATORY AGENCY END PRODUCT APPROVALS. - SEE SYSTEM NAMEPLATE.

UTILISER SEULEMENT DES CONDUCTEURS EN CUivre. UTILISER UN FIL DE 75°C MINIMUM POUR LA DÉTERMINATION DU COURANT ADMISSIBLE. UTILISER CET ÉQUIPEMENT SEULEMENT SUR UN SYSTÈME MIS À LA TERRE. LA PROTECTION CONTRE LA DÉFAILLANCE DU COURANT PRIMAIRE MONOPHASE EST FOURNIE. LE MODULE DE PROTECTION ET LE CHAUFFEUR DE CARTEAU OPTIONNEL DOIVENT ÊTRE CONNECTÉS SEULEMENT À LEUR TENSION NOMINALE. LA VALEUR NOMINALE ET LE TYPE DE L'APPAREIL DE PROTECTION DE SURINTENSITÉ DOIVENT ÊTRE CONFORMES À LA SPÉCIFICATION DE PRODUIT FINI DE L'ORGANISME DE RÉGULATION. - VOIR LA PLaque SIGNALÉTIQUE DU SYSTÈME.

WARNING: GREEN FLASHING + PAUSE 2 SEC.  
LOCKOUT: RED FLASHING + PAUSE 2 SEC. + SOLID 3 SEC. + PAUSE 2 SEC.

DIP SWITCH	PURPOSE	UP = 1	DOWN = 0
1	UNDE ARMED		
2	ARMED		
3	UNDE ARMED		
4	ARMED		
5	WSD		
6	BAUD RATE	8,800	18,200
7	PHASE	EVENT	NONE
8	COMMUNICATION NETWORK	STANDARD	STANDARD
9	TEMP. CONNECTOR CALIBRATION	DEFAULT	SERVICE
10	SHORT CYCLE PROTECTION	ENABLE	DISABLE

**COPELAND**

INTERPRET PER ASME Y14.5M-1994 AND COPELAND DESIGN STANDARDS DS2002

DO NOT SCALE DRAWING

CRITICAL PRODUCT CHARACTERISTICS

UNLESS OTHERWISE SPECIFIED DIMENSIONS ARE MILLIMETER OR ( INCH ) TOLERANCES:  
1-PLACE  $\pm 0.4$   
2-PLACE  $\pm 0.15$   
ANGULAR  $\pm 0.5^\circ$

ECN325930	3	ADD MODEL NUMBER IN D5	01-17-24	JXD	EL
ECN325205	2	UPDATED TITLE BLOCK	08-30-23		
ECN102698	1	ADDED ZH100KCE MODELS	01-08-16	EL	JL
ECN006929	0	RELEASED	08-01-14	VSB	LLB
ENG NOTICE NO.	REV. NO.	REVISIONS	DATE	BY	CHKD
22		CONFIDENTIALITY NOTICE			
THIS DRAWING AND INFORMATION CONTAINED HEREIN ARE THE EXCLUSIVE PROPERTY OF COPELAND LP AND/OR ITS AFFILIATES (COLLECTIVELY "COPELAND") AND SHALL BE RETURNED UPON DEMAND AND SHALL NOT BE REPRODUCED IN WHOLE OR IN PART, DISCLOSED TO ANYONE ELSE OR USED, WITHOUT THE WRITTEN CONSENT OF COPELAND.					
MATERIAL SPECIFICATION		DRAWN BY	SUPERSEDES DWG NO / REV NO		
N/A		VSB	497-1672-00 / 000		
		DATE	SCALE	DATE FORMAT:	
		08-01-14	1:1	MM-DD-YY	
TITLE		DRAWING NUMBER	SHEET 1 OF 1	DWG	
RFE DWG-WELD COMP ASSM		497-1695-00		4	SIZE