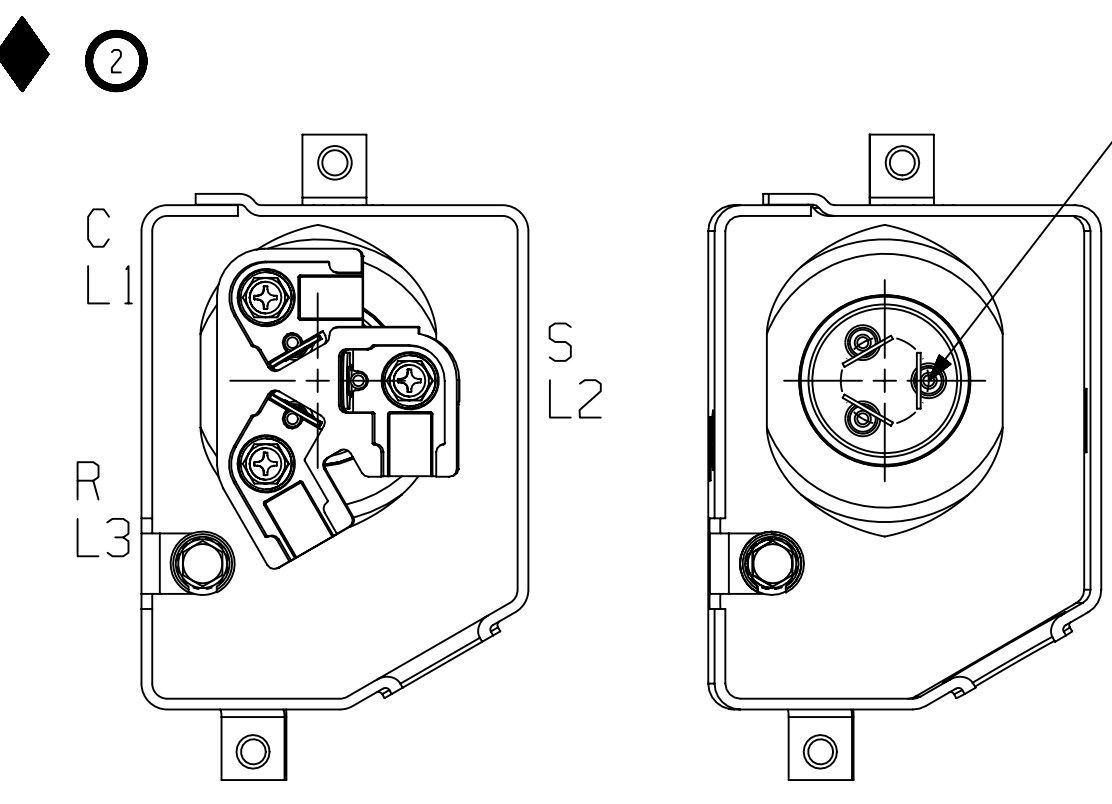
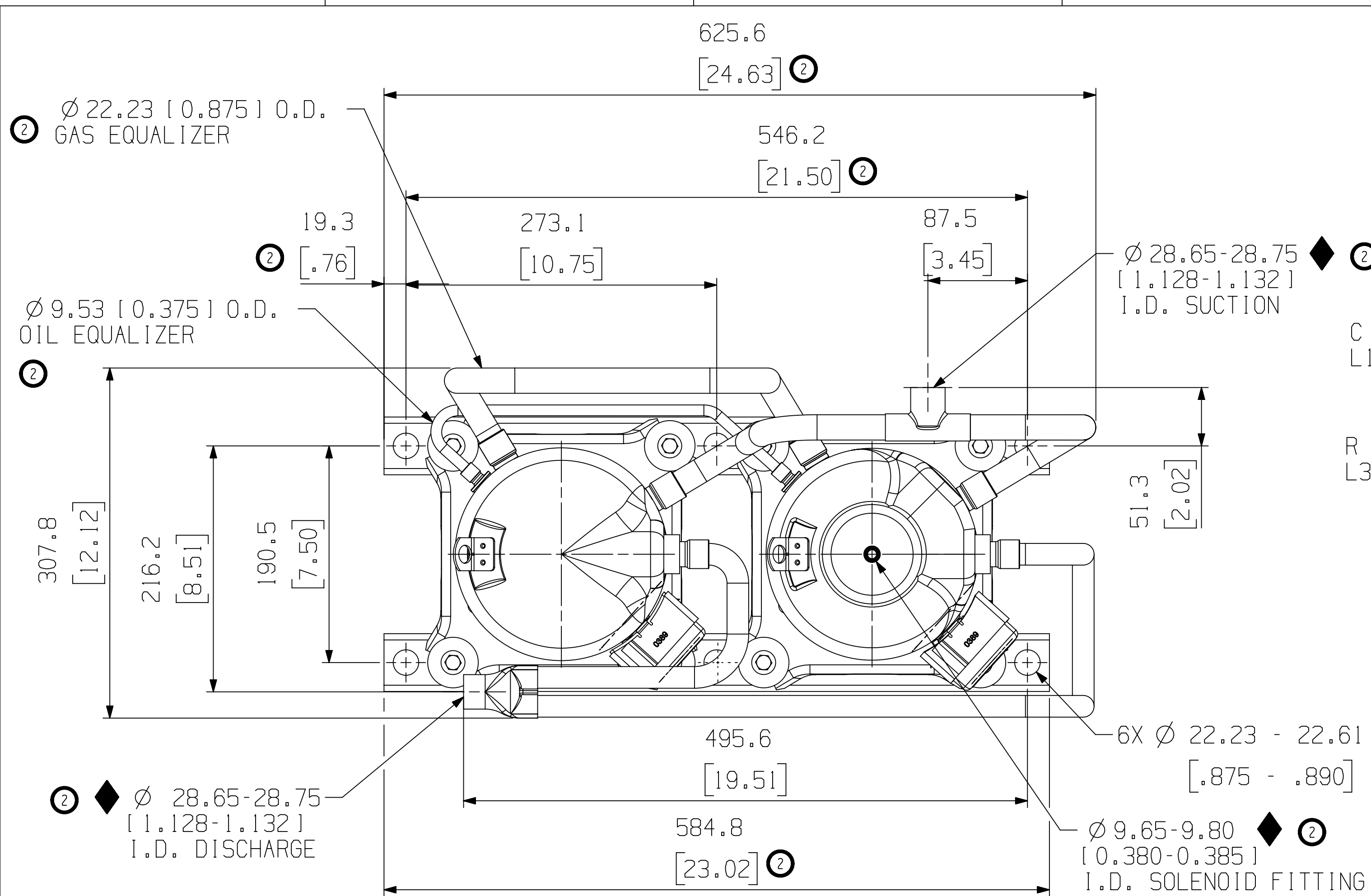


MODEL NUMBER	COMP "A"	COMP "B"
ZPDT18MCE	ZP91KCE	ZPD91KCE

SPECIFICATIONS	
ES NO.	DESCRIPTION
ES92-155	CONVERSION-METRIC



NOTES:

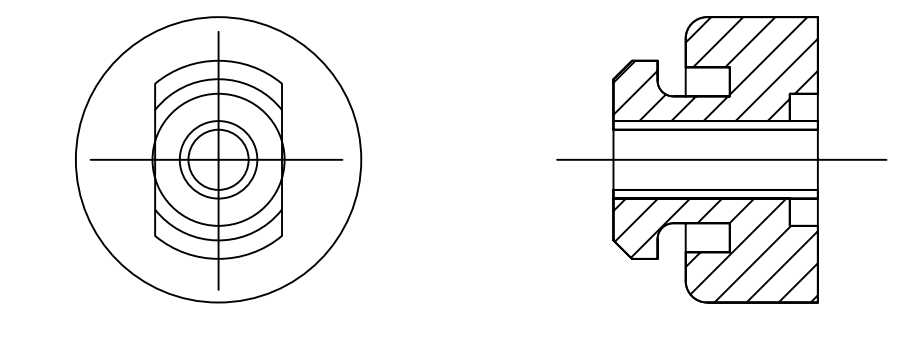
(2) 1 ALL TOLERANCE ± 1.5 [0.06] UNLESS OTHERWISE SPECIFIED.

DUE TO ACCUMULATED ASSEMBLY TOLERANCES THE LISTED COMPONENTS MAY VARY FROM THE MOUNTING HOLES AS TABULATED.

◆ ALL FITTINGS ± 3.0 [0.12]

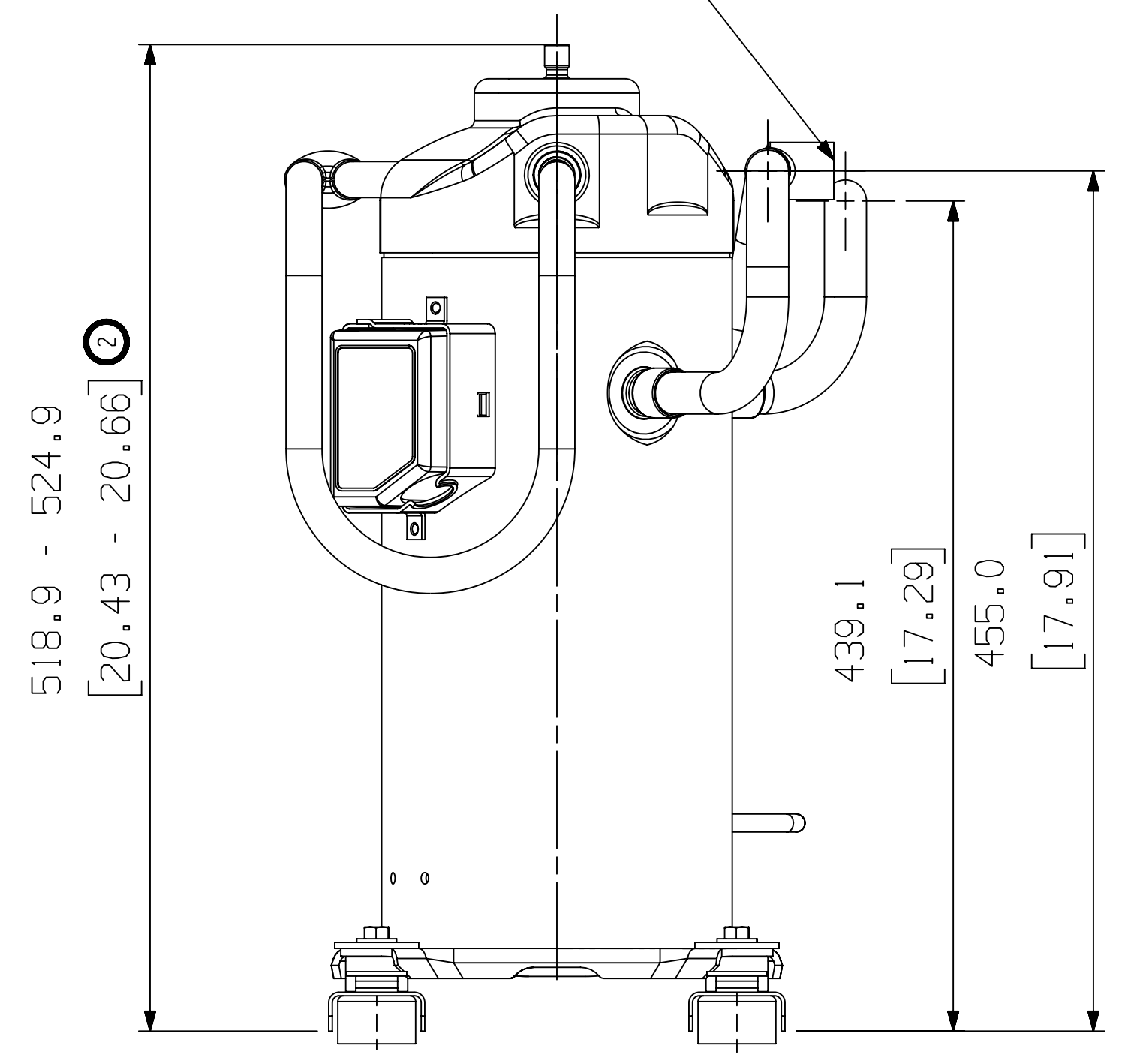
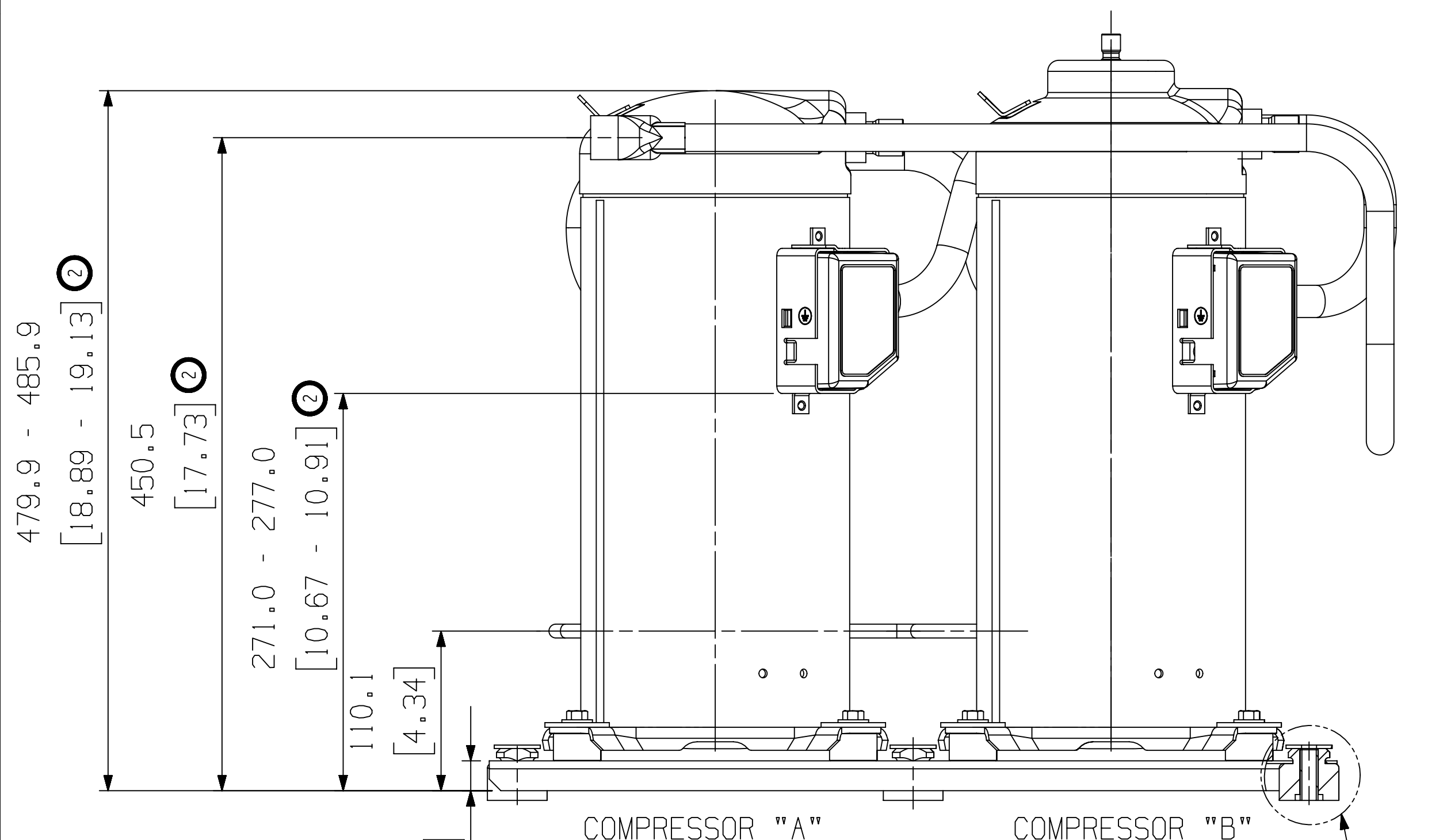
2. MOUNTING KIT:

GROMMET DUROMETER	6 FOOT KIT
35-45	527-0150-00



3. TUBE ENDS MUST BE PLUGGED.

THERE MUST BE A MINIMUM OF A 200.0MM [8"] SECTION OF STRAIGHT TUBING BEFORE ENTERING THE SUCTION TEE FITTING (2)

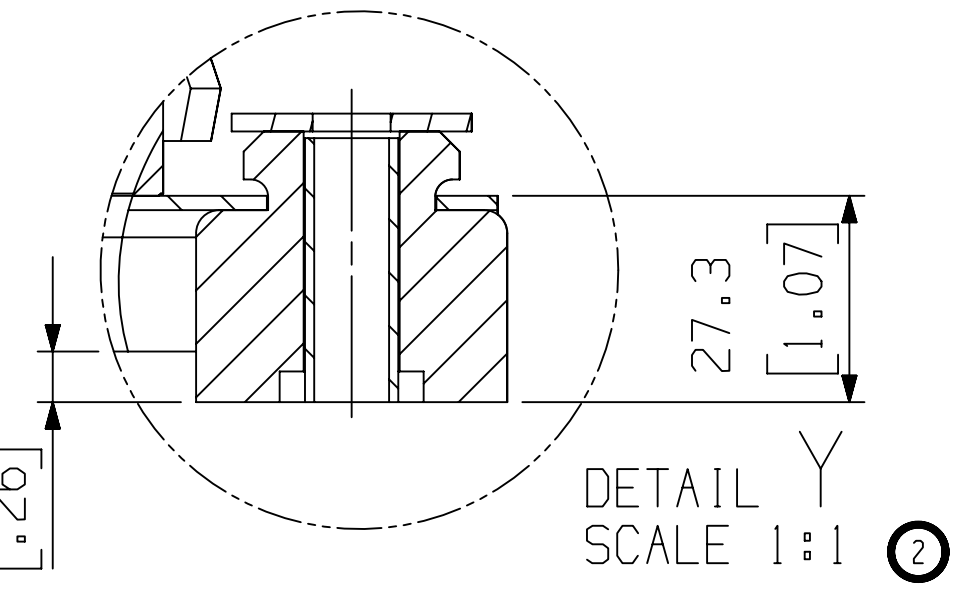


COMPRESSOR WIRING DIAGRAM

THREE PHASE MOTOR WITH INTERNAL PROTECTION

USE COPPER CONDUCTORS ONLY. USE THIS ON A GROUNDED SYSTEM ONLY. USE MINIMUM 75° C WIRE FOR AMPACITY. DETERMINATION. INTERNAL MOTOR PROTECTION-ALLOW TIME FOR RESET. PRIMARY SINGLE PHASE FAILURE PROTECTION IS PROVIDED. CRANKCASE HEATER, WHEN APPLIED, MUST BE CONNECTED ONLY TO ITS RATED VOLTAGE. OVERCURRENT PROTECTION DEVICE RATING AND TYPE MUST BE IN ACCORDANCE WITH REGULATORY AGENCY END PRODUCT APPROVALS - SEE SYSTEM NAMEPLATE. TO CORRECT IMPROPER MOTOR ROTATION, SWITCH ANY TWO SUPPLY LINES.

MOTOR WINDING CONNECTION



**COPELAND**

INTERPRET PER ASME Y14.5M-1994 AND COPELAND DESIGN STANDARDS DS2002

DO NOT SCALE DRAWING

CRITICAL PRODUCT CHARACTERISTICS

UNLESS OTHERWISE SPECIFIED DIMENSIONS ARE MILLIMETER OR ( INCH )

TOLERANCES:

1-PLACE: N/A

2-PLACE: N/A

ANGULAR: N/A

ECN325164	3	UPDATED TITLE BLOCK	08-23-23		
ECN318470	2	REDRAWN WITH CHANGES	07-14-21	LKP	PBM
ECN002586	0	RELEASED	03-07-11	JL	LLB
ENG NOTICE NO.	REV. NO.	REVISIONS	DATE	BY	CHKD
40		CONFIDENTIALITY NOTICE			
THIS DRAWING AND INFORMATION CONTAINED HEREIN ARE THE EXCLUSIVE PROPERTY OF COPELAND LP AND/OR ITS AFFILIATES (COLLECTIVELY "COPELAND") AND SHALL BE RETURNED UPON DEMAND AND SHALL NOT BE REPRODUCED IN WHOLE OR IN PART, DISCLOSED TO ANYONE ELSE OR USED, WITHOUT THE WRITTEN CONSENT OF COPELAND.					
MATERIAL SPECIFICATION		DRAWN BY	SUPERSEDES DWG NO /	REV NO	
N/A		LKP	497-1087-00 /	001	
		DATE	SCALE	DATE FORMAT:	
		07-14-21	1:1	MM-DD-YY	
TITLE			DRAWING NUMBER	SHEET 1 OF 2 DWG	
REF DWG-WELD COMP ASSM			497-1087-00	4	
			SIZE		

8

7

6

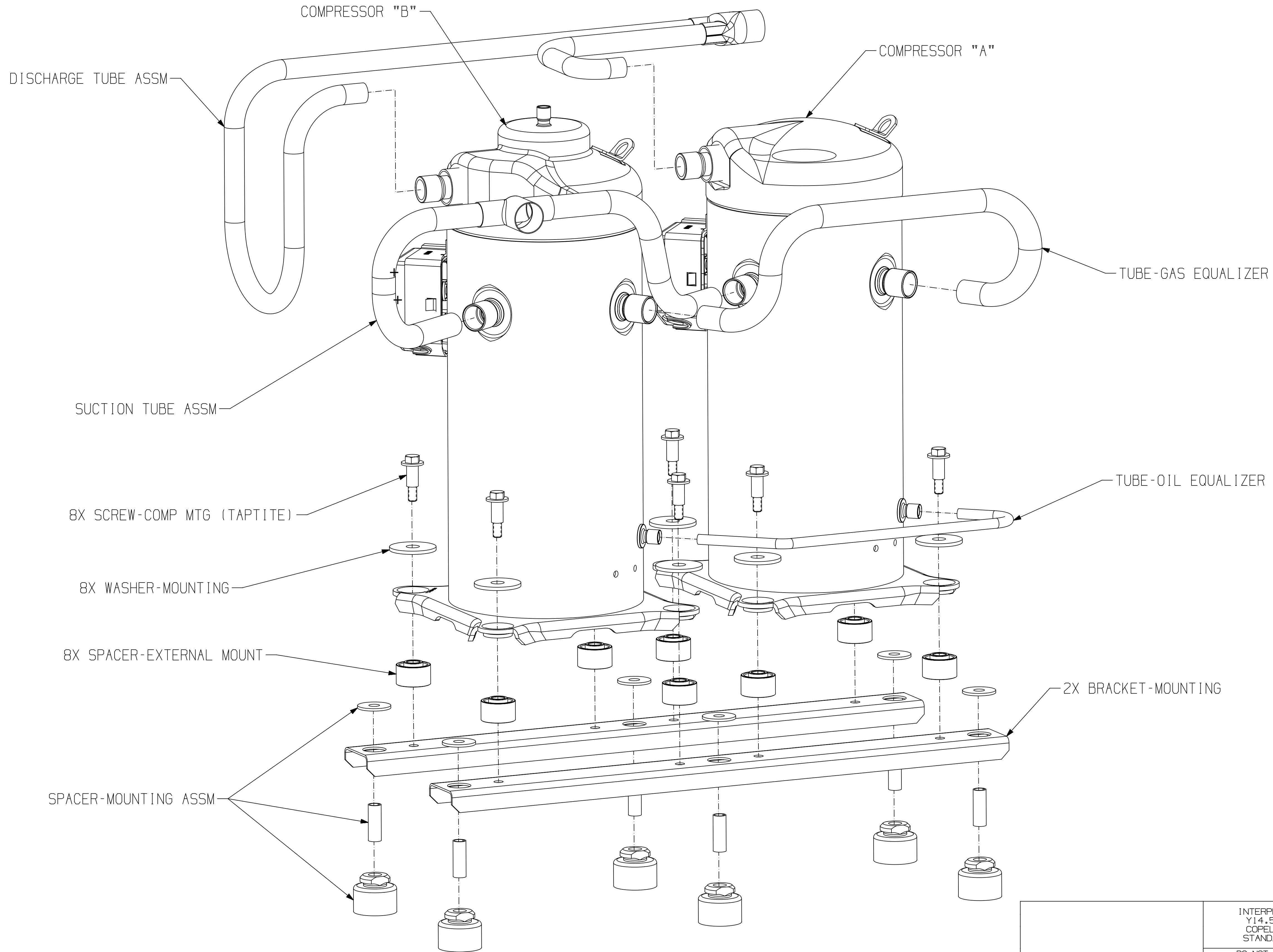
5

4

3

2

1



8

7

6

5

4

3

2

UNCONTROLLED - DO NOT MODIFY

**COPELAND**

INTERPRET PER ASME  
Y14.5M-1994 AND  
COPELAND DESIGN  
STANDARDS DS2002

DO NOT SCALE DRAWING

CRITICAL PRODUCT CHARACTERISTICS

UNLESS OTHERWISE SPECIFIED  
DIMENSIONS ARE MILLIMETER OR ( INCH )

TOLERANCES:  
1-PLACE : N/A  
2-PLACE : N/A  
ANGULAR : N/A

ECN325164	3	UPDATED TITLE BLOCK	08-23-23		
ECN318470	2	ADDED SHEET 2	07-14-21	LKP	PBM
ECN002586	0	RELEASED	03-07-11	JL	LLB
ENG NOTICE NO.	REV.NO.	REVISIONS	DATE	BY	CHKD
40	CONFIDENTIALITY NOTICE				
THIS DRAWING AND INFORMATION CONTAINED HEREIN ARE THE EXCLUSIVE PROPERTY OF COPELAND LP AND/OR ITS AFFILIATES (COLLECTIVELY "COPELAND") AND SHALL BE RETURNED UPON DEMAND AND SHALL NOT BE REPRODUCED IN WHOLE OR IN PART, DISCLOSED TO ANYONE ELSE OR USED, WITHOUT THE WRITTEN CONSENT OF COPELAND.					
MATERIAL SPECIFICATION		DRAWN BY	SUPERSEDES DWG NO / REV NO		
N/A		LKP	497-1087-00 / 001		
		DATE	SCALE	DATE FORMAT:	
		07-14-21	1:2	MM-DD-YY	
TITLE			DRAWING NUMBER	SHEET 2 OF 2 DWG	
REF DWG-WELD COMP ASSM			497-1087-00	4	
			SIZE		

©COPYRIGHT COPELAND - CONFIDENTIAL