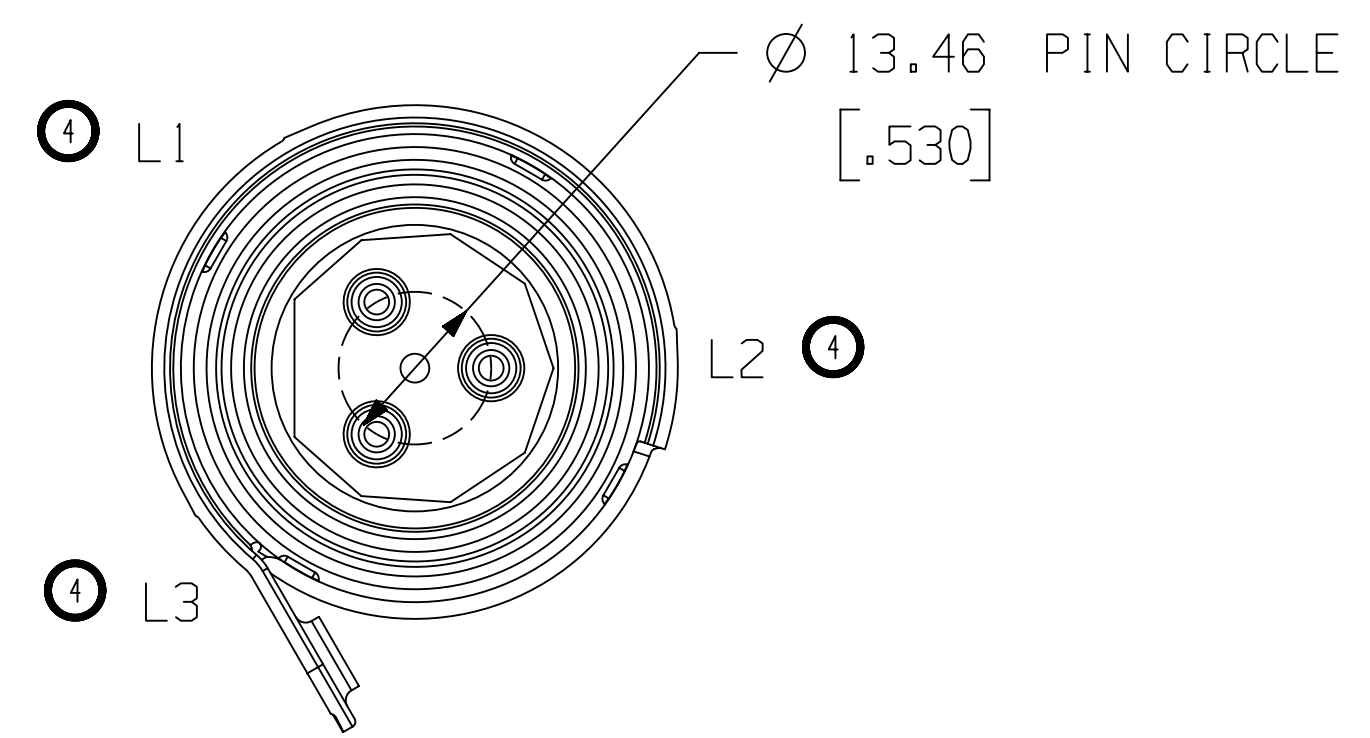
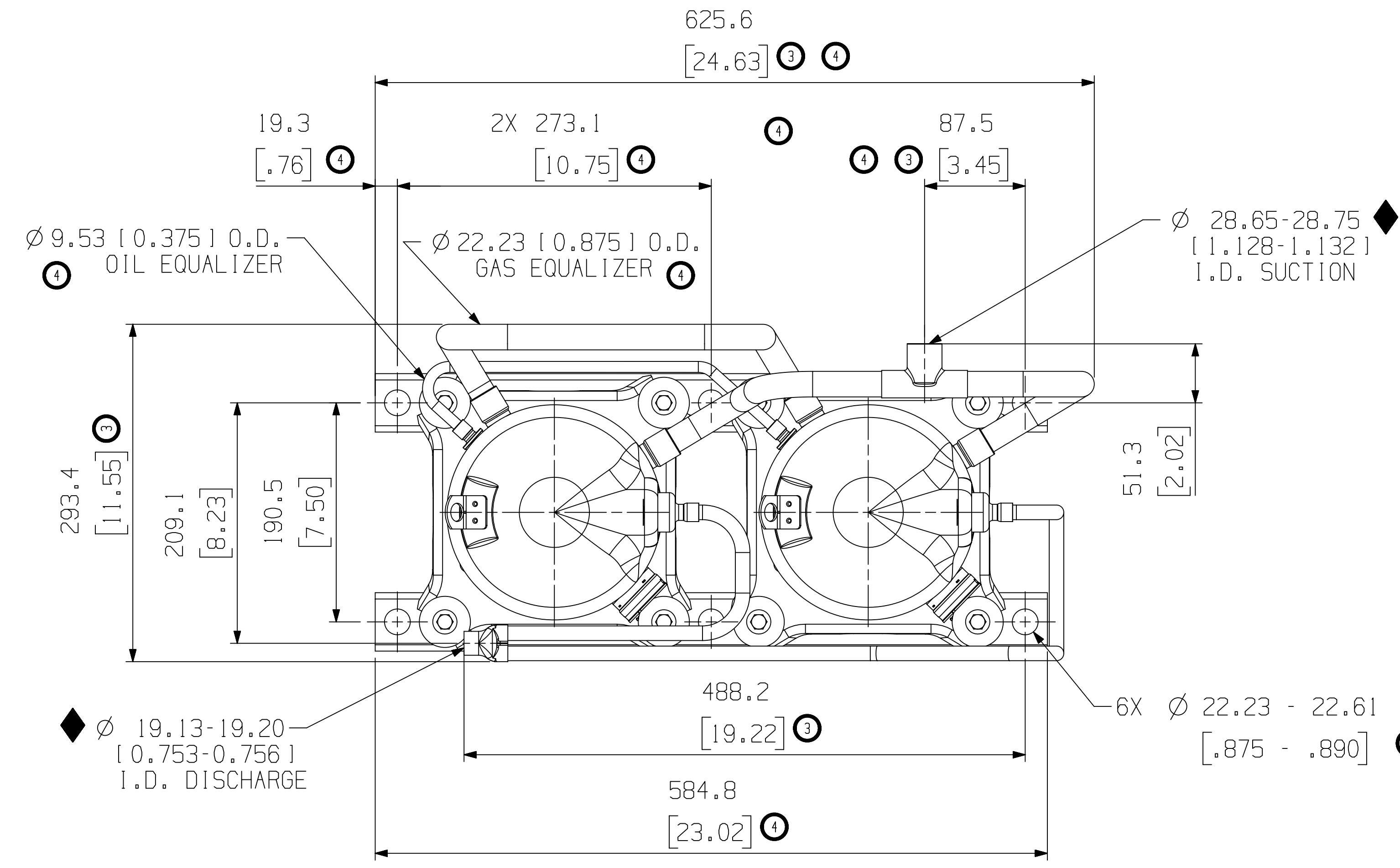


MODEL NUMBER	COMP "A"	COMP "B"
ZPT114K3E	ZP57K3E	ZP57K3E
ZPT122KCE	ZP61KCE	ZP61KCE
ZPT134KCE	ZP67KCE	ZP67KCE
ZPT144KCE	ZP72KCE	ZP72KCE
ZPT166KCE	ZP83KCE	ZP83KCE
ZPT152KCE	ZP76KCE	ZP76KCE

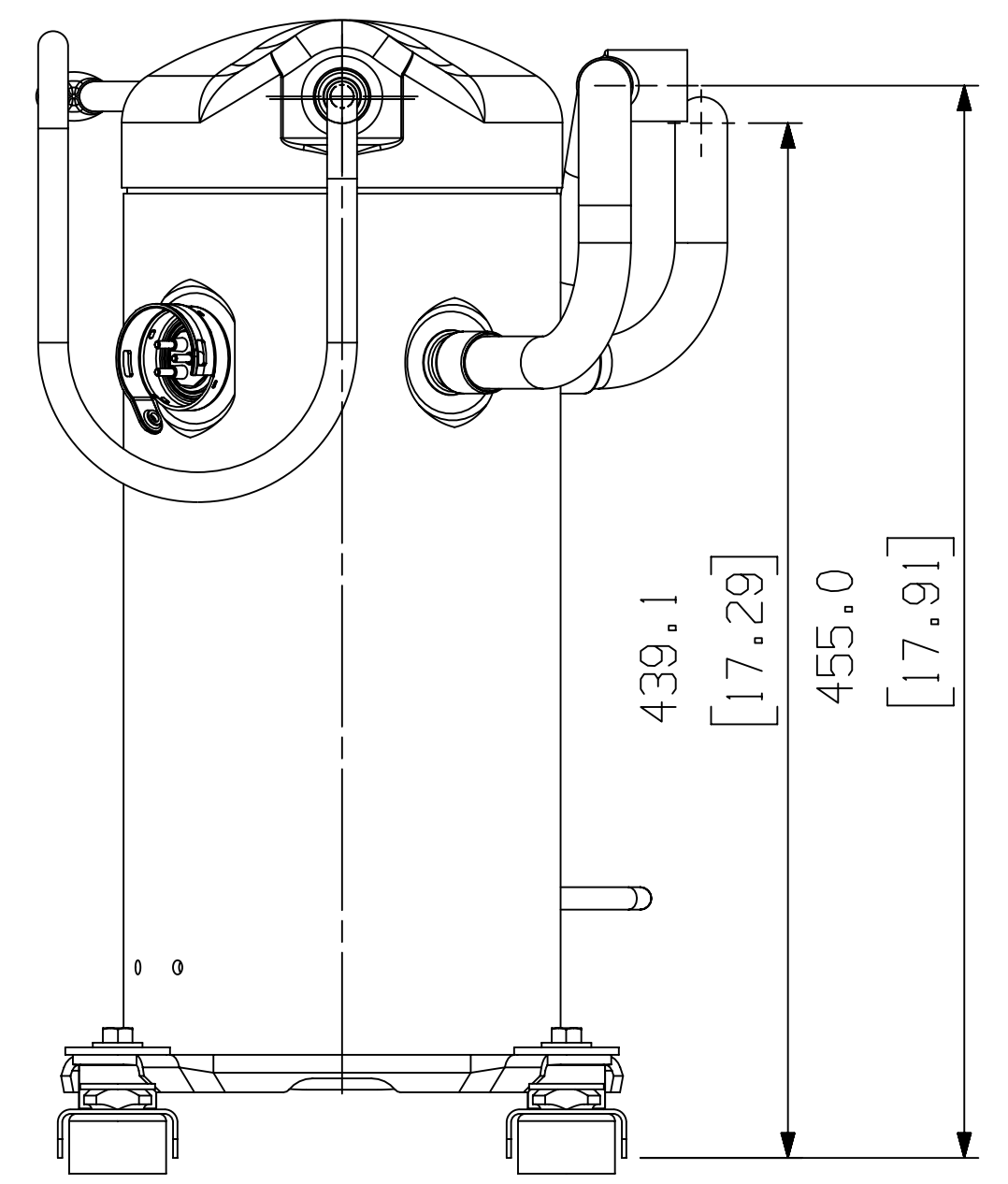
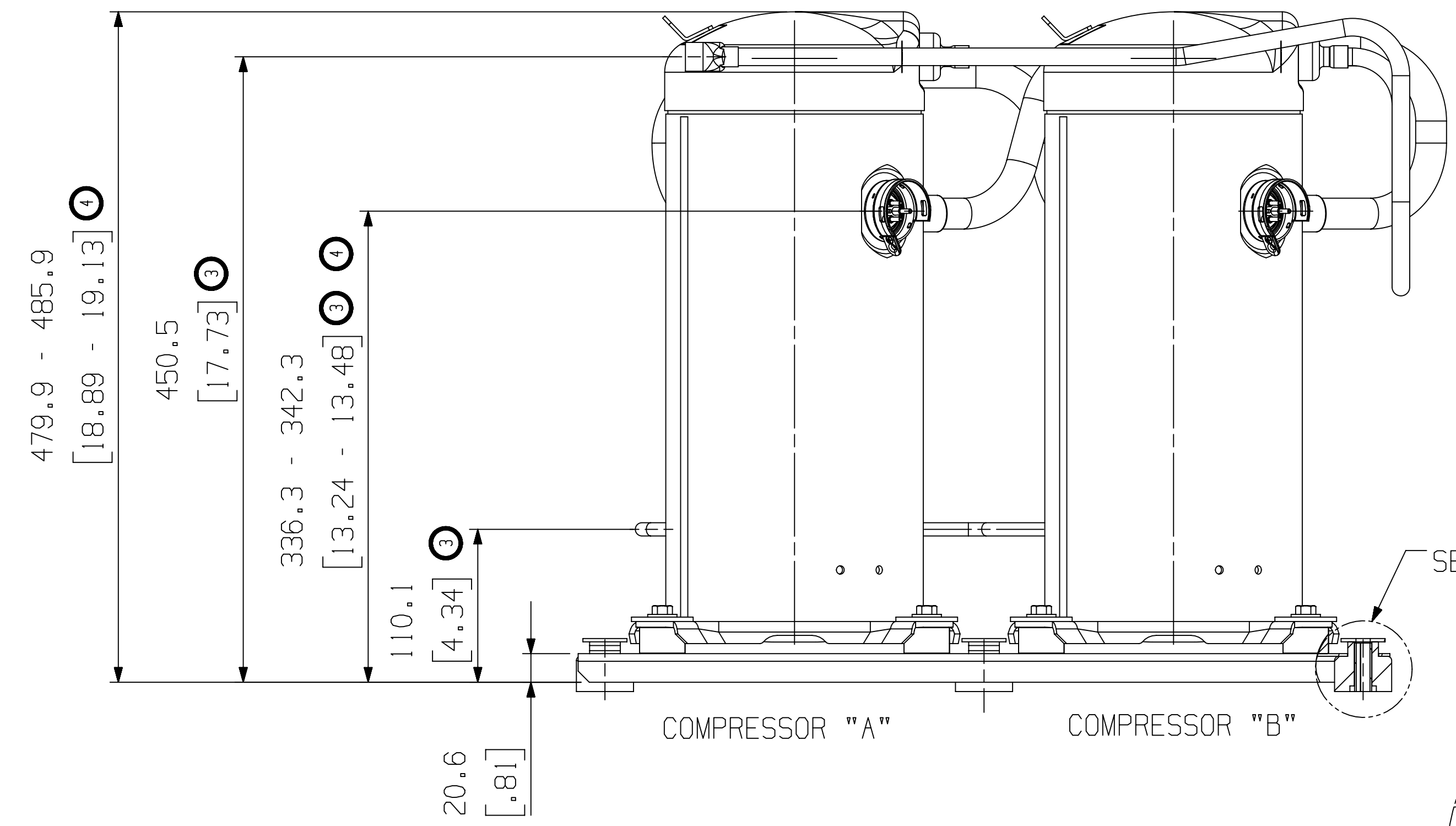
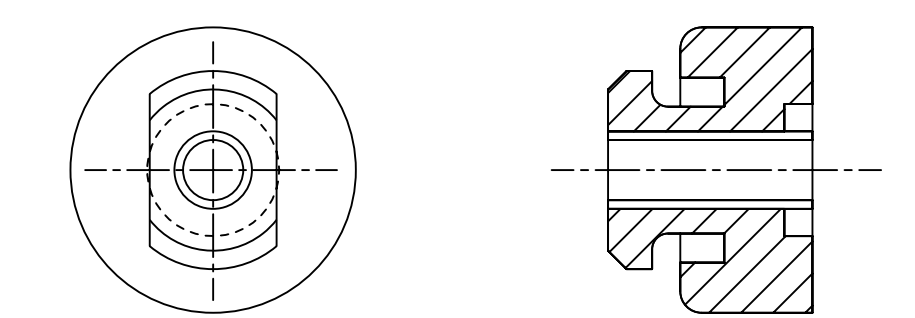
SPECIFICATIONS	
ES NO.	DESCRIPTION
ES92-155	CONVERSION-METRIC



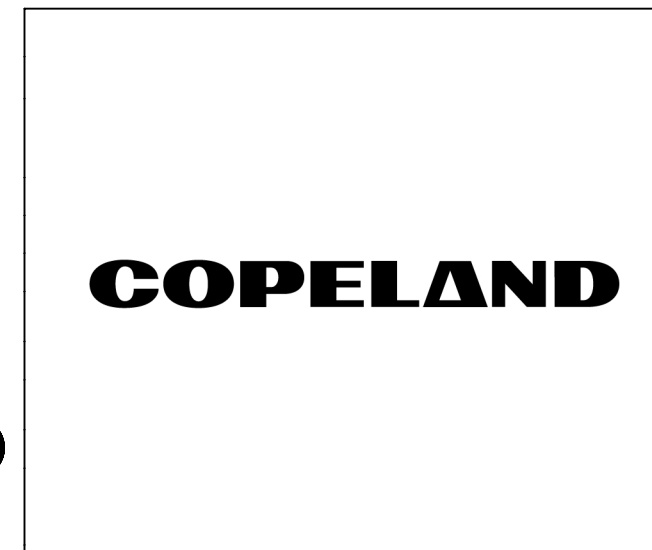
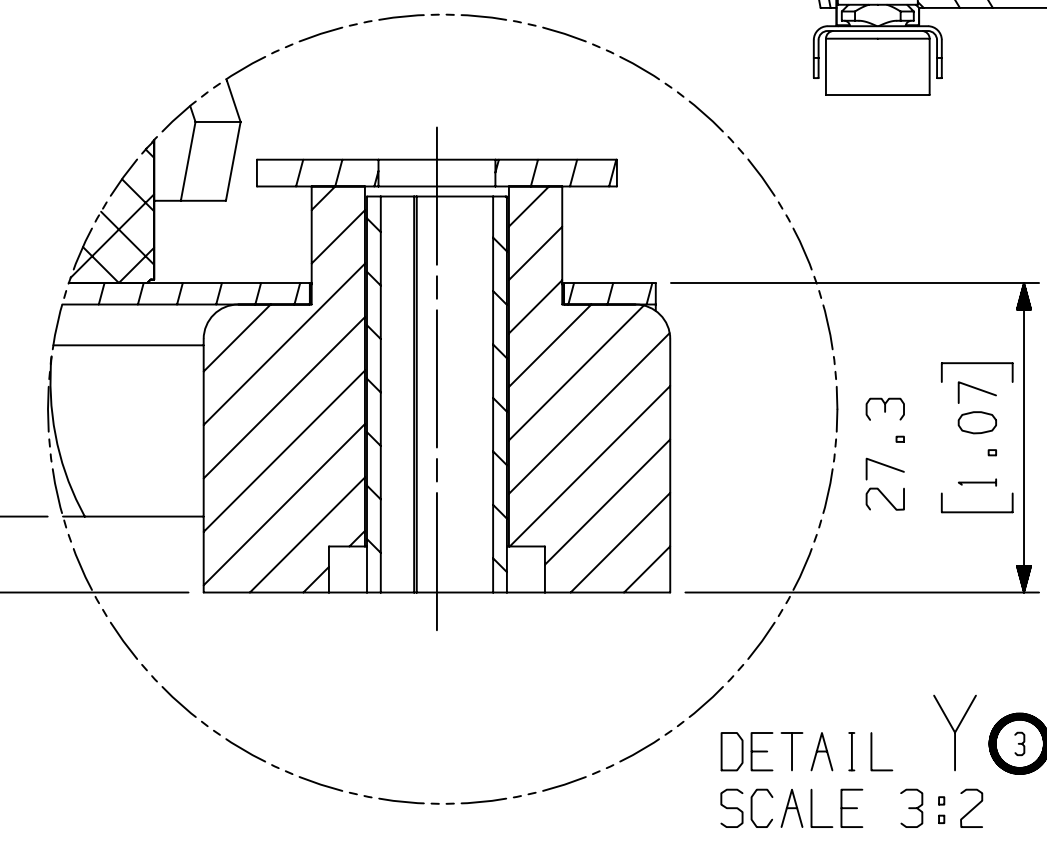
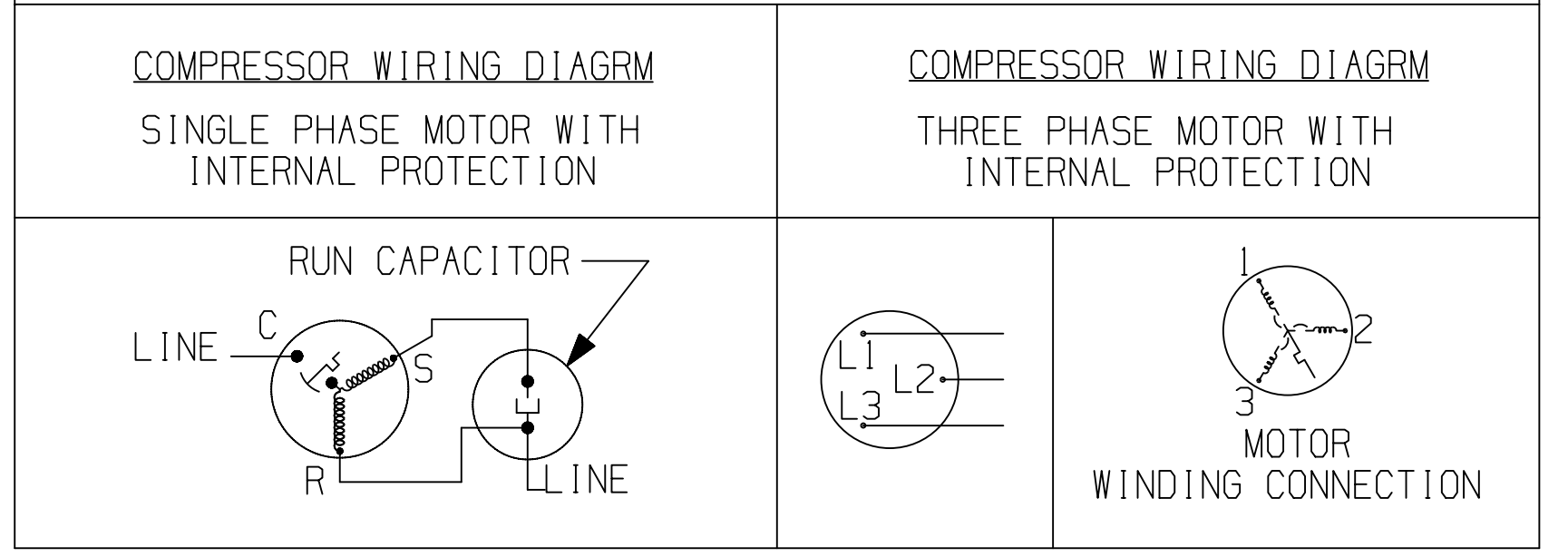
NOTES:

- ALL TOLERANCE ± 1.5 [0.06] UNLESS OTHERWISE SPECIFIED.
- DUE TO ACCUMULATED ASSEMBLY TOLERANCES THE LISTED COMPONENTS MAY VARY FROM THE MOUNTING HOLES AS SHOWN BELOW:
- ALL FITTINGS: ± 4.6 [0.18]
- MOUNTING KIT.
- TUBE ENDS MUST BE PLUGGED.

GROMMET DUROMETER	6 FOOT KIT
35-45	527-0150-00



USE COPPER CONDUCTORS ONLY. USE MINIMUM 75° C WIRE FOR AMPACITY DETERMINATION. INTERNAL MOTOR PROTECTION - ALLOW TIME FOR RESET. OVERCURRENT PROTECTION DEVICE RATING AND TYPE MUST BE IN ACCORDANCE WITH REGULATORY AGENCY END PRODUCT APPROVALS - SEE SYSTEM NAMEPLATE. CRANKCASE HEATER, WHEN APPLIED, MUST BE CONNECTED ONLY TO ITS RATED VOLTAGE. TO CORRECT IMPROPER ROTATION OF THREE PHASE MODELS, SWITCH ANY TWO SUPPLY LINES. REFER TO THE APPLICABLE SYSTEM WIRING DIAGRAM.



INTERPRET PER ASME Y14.5M-1994 AND COPELAND DESIGN STANDARDS DS2002

DO NOT SCALE DRAWING

CRITICAL PRODUCT CHARACTERISTICS

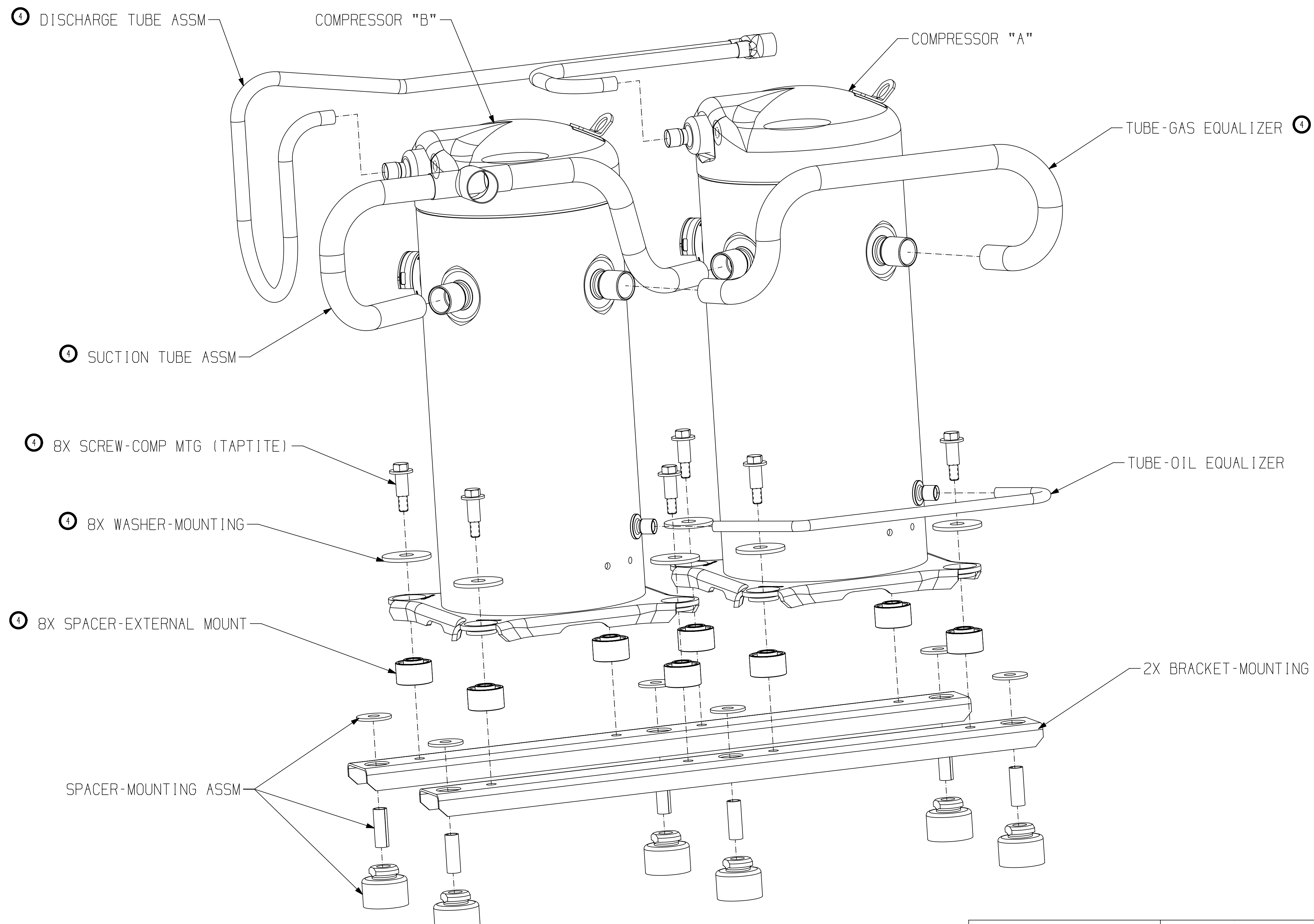
UNLESS OTHERWISE SPECIFIED DIMENSIONS ARE MILLIMETER OR (INCH)

TOLERANCES:

- 1-PLACE : N/A
- 2-PLACE : N/A
- ANGULAR : N/A

ECN	REV.	DESCRIPTION	DATE	BY	CHKD
ECN325210	7	UPDATED TITLE BLOCK	08-30-23		
ECN307606	5	REINSTATE ZPT114K3E MODEL	10-17-19	TLD	LLB
ECN307606	4	OBSOLETE ZPT114K3E MODEL	08-22-19	LKP	PBM
ECN302537	3	ADDED ZPT134KCE MODEL	07-11-17	JLS	LLB
ECN001869	0	RELEASED	07-10-09	PBM	EC

ENG NOTICE NO.	REV. NO.	REVISIONS	DATE	BY	CHKD
0		CONFIDENTIALITY NOTICE			
THIS DRAWING AND INFORMATION CONTAINED HEREIN ARE THE EXCLUSIVE PROPERTY OF COPELAND LP AND/OR ITS AFFILIATES (COLLECTIVELY "COPELAND") AND SHALL BE RETURNED UPON DEMAND AND SHALL NOT BE REPRODUCED IN WHOLE OR IN PART, DISCLOSED TO ANYONE ELSE OR USED, WITHOUT THE WRITTEN CONSENT OF COPELAND.					
MATERIAL SPECIFICATION		DRAWN BY	SUPERSEDES DWG NO / REV NO		
N/A		JLS	497-2869-00 / 002		
		DATE	SCALE	DATE FORMAT:	
		07-11-17	1:1	MM-DD-YY	
TITLE			DRAWING NUMBER	SHEET 1 OF 2 DWG	
REF DWG-WELD COMP ASSM			497-2869-00	4	
			SIZE		



ECN325210	7	UPDATED TITLE BLOCK	08-30-23		
ECN307606	5	SEE SHEET 1	10-17-19	TLD	LLB
ECN307606	4	CHANGED NOTE CALLOUT	08-22-19	LKP	PBM
ECN302537	3	ADDED SHEET	07-11-17	JLS	LLB
ECN001869	0	RELEASED	07-10-09	PBM	EC
ENG NOTICE NO.	REV. NO.	REVISIONS	DATE	BY	CHKD

CONFIDENTIALITY NOTICE					
THIS DRAWING AND INFORMATION CONTAINED HEREIN ARE THE EXCLUSIVE PROPERTY OF COPELAND LP AND/OR ITS AFFILIATES (COLLECTIVELY "COPELAND") AND SHALL BE RETURNED UPON DEMAND AND SHALL NOT BE REPRODUCED IN WHOLE OR IN PART, DISCLOSED TO ANYONE ELSE OR USED, WITHOUT THE WRITTEN CONSENT OF COPELAND.					
MATERIAL SPECIFICATION	DRAWN BY	SUPERSEDES DWG NO / REV NO	DATE FORMAT: MM-DD-YY		
N/A	JLS	497-2869-00 / 002	DATE	SCALE	DATE
			07-11-17	1:2	
TITLE	DRAWING NUMBER	SHEET 2 OF 2 DWG		SIZE	
REF DWG-WELD COMP ASSM	497-2869-00			4	

COPELAND

INTERPRET PER ASME Y14.5M-1994 AND COPELAND DESIGN STANDARDS DS2002

DO NOT SCALE DRAWING

CRITICAL PRODUCT CHARACTERISTICS

UNLESS OTHERWISE SPECIFIED DIMENSIONS ARE MILLIMETER OR (INCH)

TOLERANCES:
 1-PLACE ± N/A
 2-PLACE ± N/A
 ANGULAR ± N/A

©COPYRIGHT COPELAND - CONFIDENTIAL