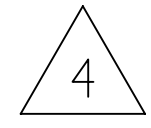
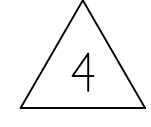
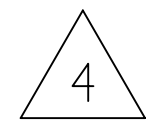
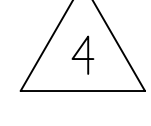
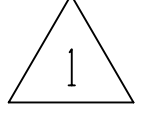






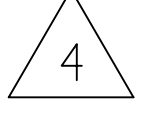


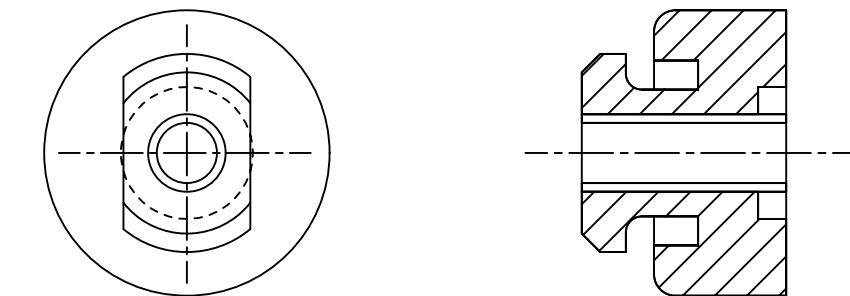
PART NUMBER	MODEL NUMBER	A ±3.0	B ±3.0	E	F	G	H	J	L ±3.0	V ±3.0	SHEETS
497-3543-00	ZF13K4* ZF15K4* ZF18K4*	442.0 [17.40]	409.6 [16.13]	79.5 [3.13]	340.9 [13.42]	47.5 [1.87]	25.6 [1.01]	120.2 [4.73]	469.8 [18.50]	OMIT	1,2,3
497-3543-01	ZS30K4* ZS38K4* ZS45K4*	437.7 [17.23]	409.6 [16.13]	79.5 [3.13]		47.5 [1.87]	OMIT	OMIT	OMIT	OMIT	1,2
497-3543-02	ZB30KC / KCE ZB38KC / KCE ZB42KC / KCE ZB45KC / KCE	437.7 [17.23]	409.6 [16.13]	79.5 [3.13]		47.5 [1.87]	OMIT	OMIT	OMIT	OMIT	1,2
497-3543-05	ZF13KVE ZF18KVE	442.0 [17.40]	409.6 [16.13]	79.5 [3.13]	340.9 [13.42]	47.5 [1.87]	25.6 [1.01]	123.1 [4.85]	OMIT	451.4 [17.77]	1,2,4
497-3543-07	ZF13KVE-***-524 ZF18KVE-***-524	442.0 [17.40]	409.6 [16.13]	OMIT	340.9 [13.42]	OMIT	25.6 [1.01]	120.2 [4.73]	469.8 [18.50]	OMIT	1,2,3
497-3543-08	ZS30K4E-***-426 ZS38K4E-***-426 ZS45K4E-***-426	437.7 [17.23]	409.6 [16.13]	79.5 [3.13]		OMIT	OMIT	OMIT	OMIT	OMIT	1,2
497-3543-18	ZS38K4E-***-524	437.7 [17.23]	409.6 [16.13]	OMIT		OMIT	OMIT	OMIT	OMIT	OMIT	1,2

SPECIFICATIONS	
ES NO.	DESCRIPTION
ES92-155	CONVERSION-METRIC

NOTES:

-  ALL TOLERANCES ± 1.50 [0.060] UNLESS OTHERWISE SPECIFIED.
-  DUE TO ACCUMULATED ASSEMBLY TOLERANCES THE LISTED COMPONENTS MAY VARY FROM THE MOUNTING HOLES AS SHOWN BELOW:
-   SUCTION FITTING : ± 3.0 [0.12]
-   DISCHARGE FITTING : ± 3.0 [0.12]
- 2. TUBE ENDS MUST BE PLUGED.
-  TORQUE T-BLOCK SCREWS TO 2.4-2.6 N-M [21-23 LBS-IN]
-  INJECTION FITTING & THERMOSTAT TUBE OMITTED.
- 5. FOR MORE INFORMATION SEE PRODUCT CATALOG.
- 6. FULL HEIGHT OF COMPRESSOR DOES NOT INCLUDE MOUNTING SPACERS.
- 7. MOUNTING KIT:

GROMMET DUROMETER	4 FOOT KIT
35-45	527-0116-00




USE COPPER CONDUCTORS ONLY. USE MINIMUM 75° C WIRE FOR AMPACITY DETERMINATION.
INTERNAL MOTOR PROTECTION - ALLOW TIME FOR RESET. OVERCURRENT PROTECTION DEVICE RATING AND TYPE MUST BE IN ACCORDANCE WITH REGULATORY AGENCY END PRODUCT APPROVALS - SEE SYSTEM NAMEPLATE.
CRANKCASE HEATER, WHEN APPLIED, MUST BE CONNECTED ONLY TO ITS RATED VOLTAGE. TO CORRECT IMPROPER ROTATION OF THREE PHASE MODELS, SWITCH ANY TWO SUPPLY LINES. REFER TO THE APPLICABLE SYSTEM WIRING DIAGRAM.

005-1213-00
8-06


COMPRESSOR WIRING DIAGRAM

ECN	REV.	DESCRIPTION	DATE	BY	CHKD
ECN321503	41	REVISED FOR MULTIPLE CHANGES	08-03-22	SPM	AMN
ECN312601	40	RELEASED - 18	11-15-19	IRK	VC
ECN300410	39	UPDATED MODEL NUMBER FOR -01	08-31-17	SVR	PR1
ECN300410	38	REDRAWN WITH CHANGES	06-28-17	JSK	PR1
32-1198-023	0	RELEASED	01-11-99	AJA	DAN




INTERPRET PER ASME Y14.5M-1994 AND EMERSON DESIGN STANDARDS DS2002

DO NOT SCALE DRAWING

 CRITICAL PRODUCT CHARACTERISTICS

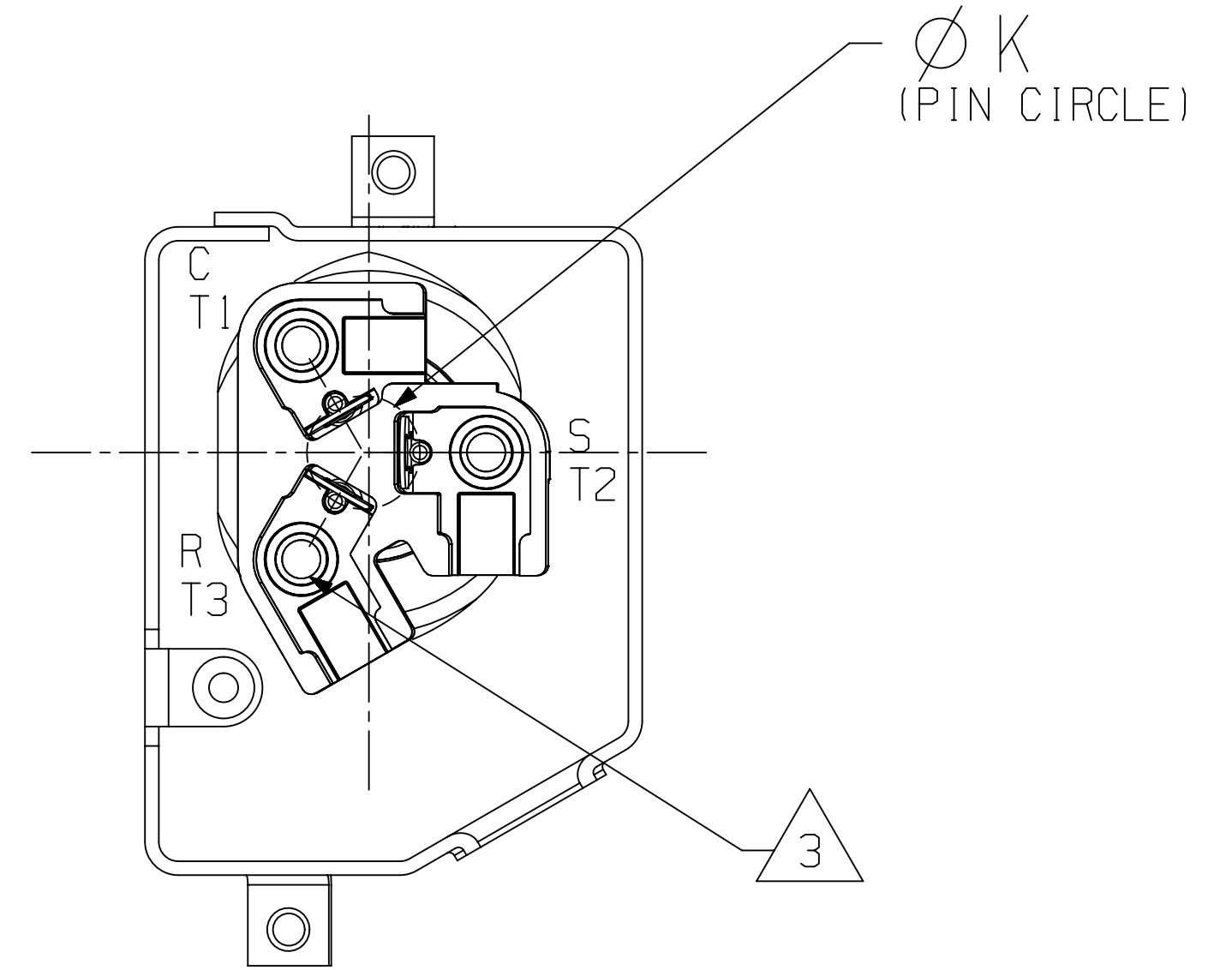
UNLESS OTHERWISE SPECIFIED DIMENSIONS ARE MILLIMETER OR (INCH)

TOLERANCES:
1-PLACE ±
2-PLACE ±
ANGULAR ±

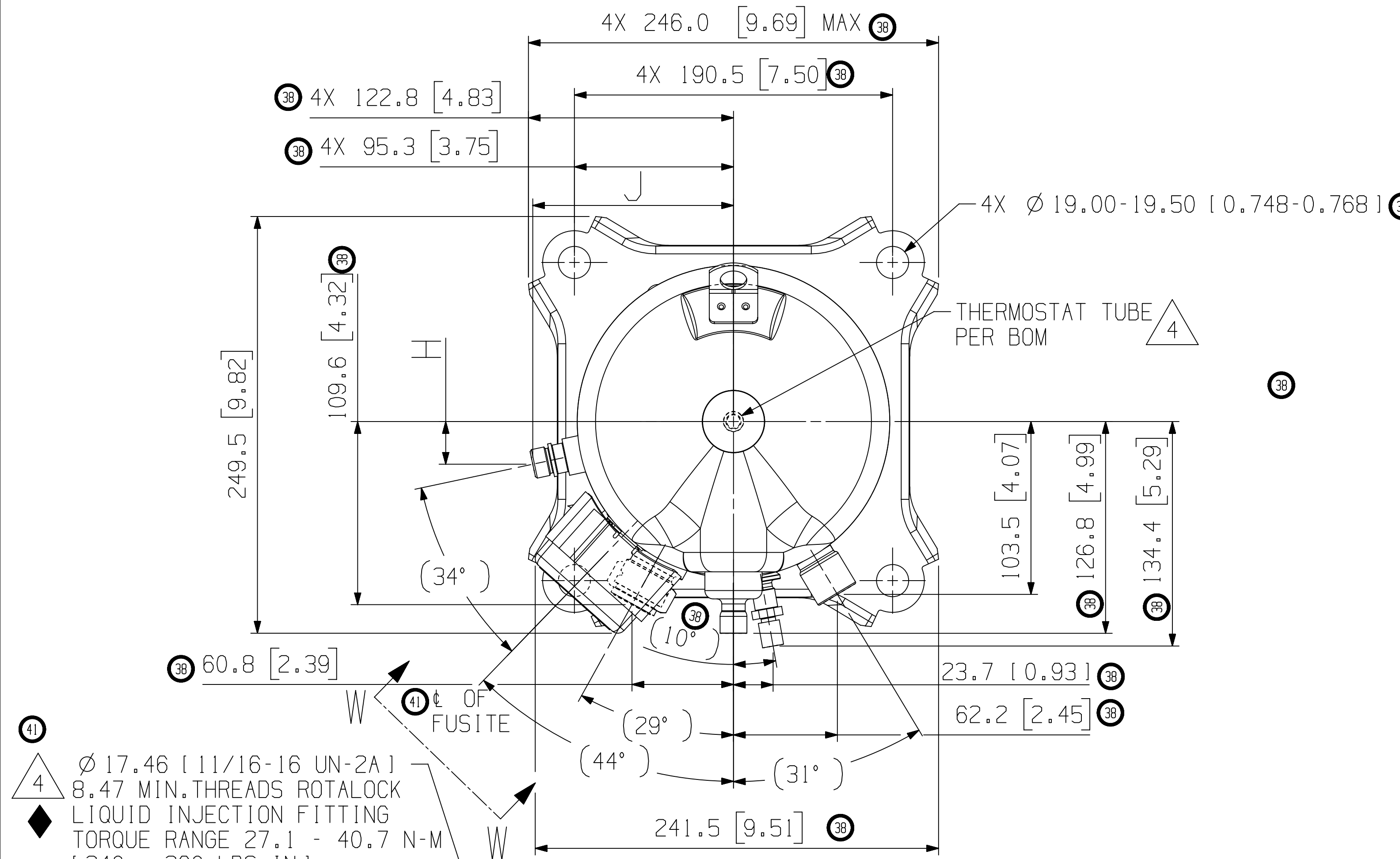


ENG NOTICE NO.	REV.NO.	REVISIONS	DATE	BY	CHKD
0		CONFIDENTIALITY NOTICE			
THIS DRAWING AND INFORMATION CONTAINED HEREIN ARE THE EXCLUSIVE PROPERTY OF EMERSON CLIMATE TECHNOLOGIES, INC AND/OR ITS AFFILIATES (COLLECTIVELY "EMERSON") AND SHALL BE RETURNED UPON DEMAND AND SHALL NOT BE REPRODUCED IN WHOLE OR IN PART, DISCLOSED TO ANYONE ELSE OR USED, WITHOUT THE WRITTEN CONSENT OF EMERSON.					
MATERIAL SPECIFICATION		DRAWN BY	SUPERSEDES DWG NO / REV NO		
N/A		JSK	497-3543-00 / 037		
		DATE	SCALE	DATE FORMAT:	
		06-28-17	1:1	MM-DD-YY	
TITLE			DRAWING NUMBER	SHEET 1 OF 4 DWG	
REF DWG-WELD COMP ASSM			497-3543-00	4	
			SIZE		

MOTOR TYPE	Ø K (PIN CIRCLE)
PFJ PFV TF5	13.46 [0.530]
TFD TFE TF7	17.45 [0.687]



TERMINAL BOX LAYOUT OPTIONS
TERMINAL BOX COVER NOT SHOWN
VIEW W-W
SCALE 1:1



Ø 17.46 [11/16-16 UN-2A]
8.47 MIN. THREADS ROTALOCK
LIQUID INJECTION FITTING
TORQUE RANGE 27.1 - 40.7 N-M
[240 - 360 LBS-IN]

(SEE SHEET 4 FOR VAPOR
INJECTION FITTING OPTIONS)

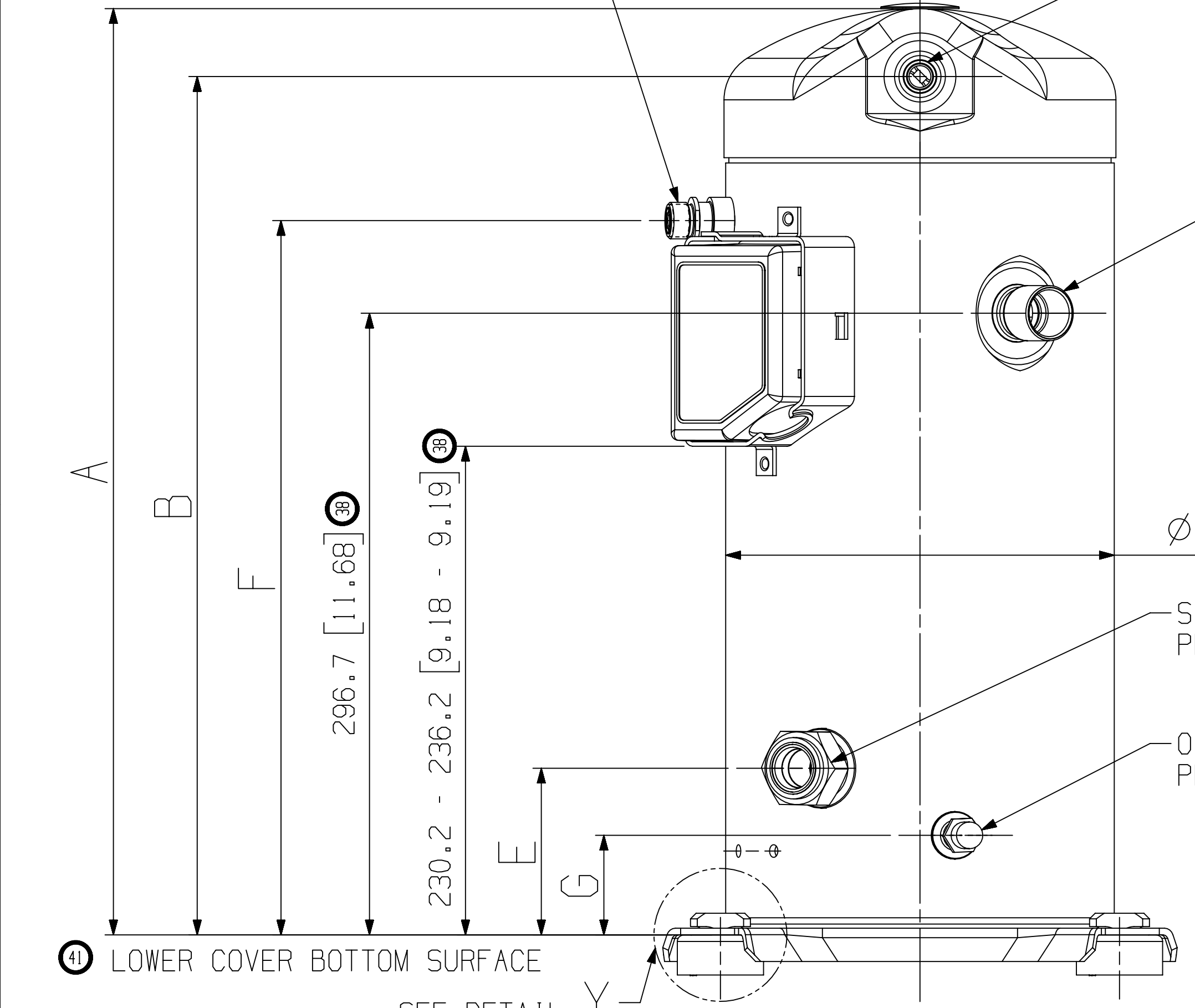
Ø 12.78-12.95 [0.503-0.510] I.D.
√10.1 [0.40] MIN.
0.038 [0.0015] MIN. THICK EXTERIOR
AND 0.038 [0.0015] MIN. THICK INTERIOR
COPPER PLATED STEEL DISCHARGE FITTING

Ø 22.30 - 22.48 [0.878 - 0.885] I.D.
√19.9 [0.78] MIN.
0.038 [0.0015] MIN. THICK EXTERIOR
AND 0.038 [0.0015] MIN. THICK INTERIOR
COPPER PLATED STEEL SUCTION FITTING

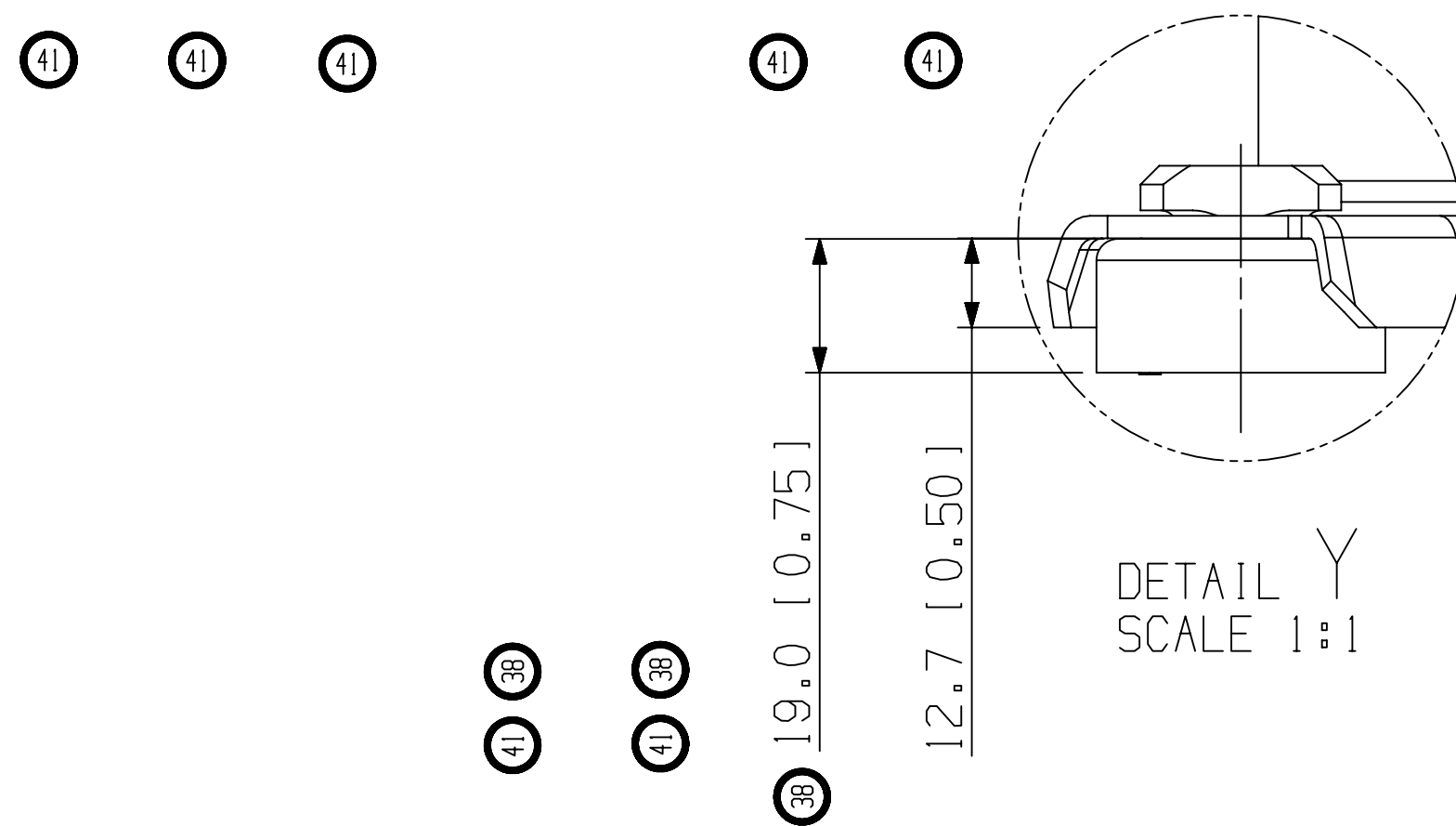
Ø 185.5 [7.30]

SIGHT GLASS
PER BOM

OIL DRAIN
PER BOM



SEE DETAIL Y



DETAIL Y
SCALE 1:1

ECN321503	41	REVISED FOR MULTIPLE CHANGES	08-03-22	SPM	AMN
ECN312601	40	RELEASED - 18	11-15-19	IRK	VC
ECN300410	39	SEE SHEET 1	08-31-17	SVR	PRI
ECN300410	38	REDRAWN WITH CHANGES	06-28-17	JSK	PRI
32-1198-023	0	RELEASED	01-11-99	AJA	DAN

ENG NOTICE NO.	REV. NO.	REVISIONS		DATE	BY	CHKD
0		CONFIDENTIALITY NOTICE				
THIS DRAWING AND INFORMATION CONTAINED HEREIN ARE THE EXCLUSIVE PROPERTY OF EMERSON CLIMATE TECHNOLOGIES, INC AND/OR ITS AFFILIATES (COLLECTIVELY "EMERSON") AND SHALL BE RETURNED UPON DEMAND AND SHALL NOT BE REPRODUCED IN WHOLE OR IN PART, DISCLOSED TO ANYONE ELSE OR USED, WITHOUT THE WRITTEN CONSENT OF EMERSON.						
MATERIAL SPECIFICATION		DRAWN BY	SUPERSEDES DWG NO / REV NO			
N/A		JSK	497-3543-00 / 037			
		DATE	SCALE	DATE FORMAT:		
		06-28-17	1:2	MM-DD-YY		
TITLE			DRAWING NUMBER	SHEET 2 OF 4 DWG		
REF DWG-WELD COMP ASSM			497-3543-00	4		
			SIZE			

EMERSON
Copeland

INTERPRET PER ASME
Y14.5M-1994 AND
EMERSON DESIGN
STANDARDS DS2002

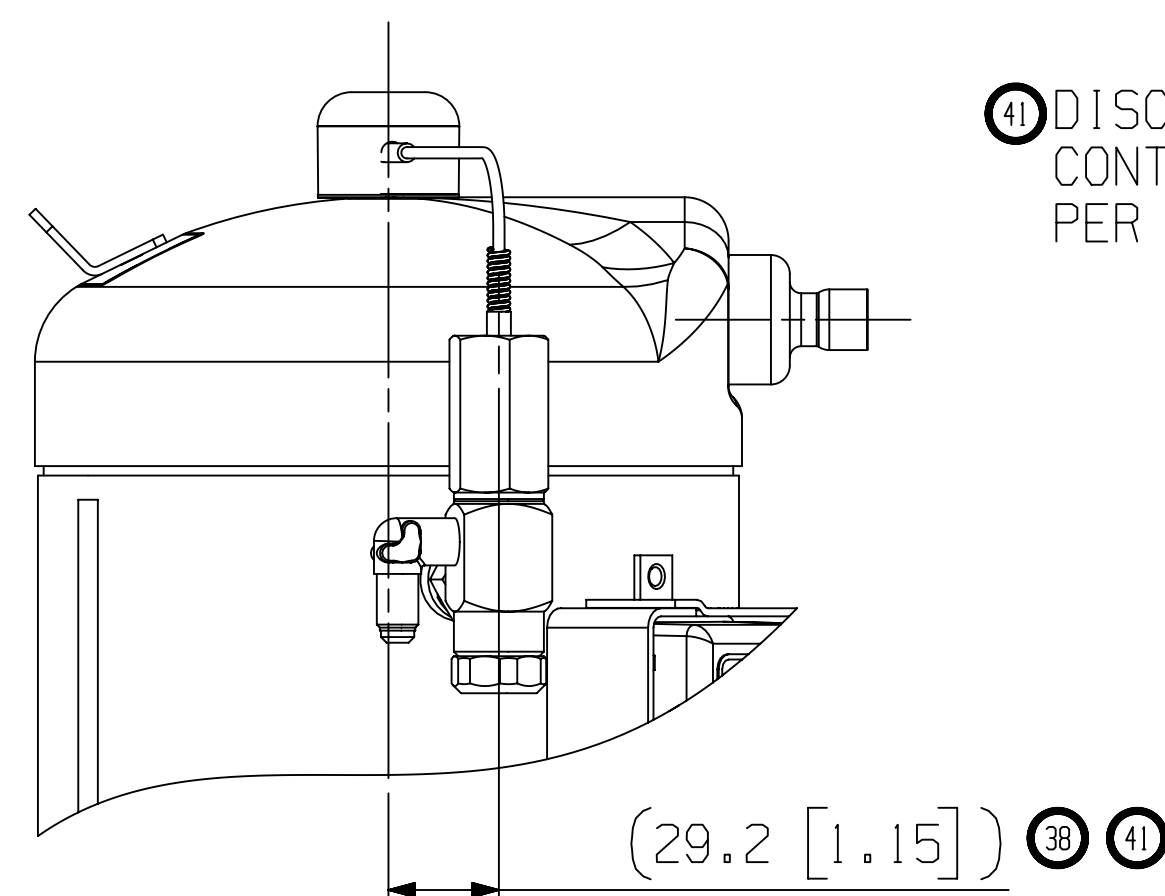
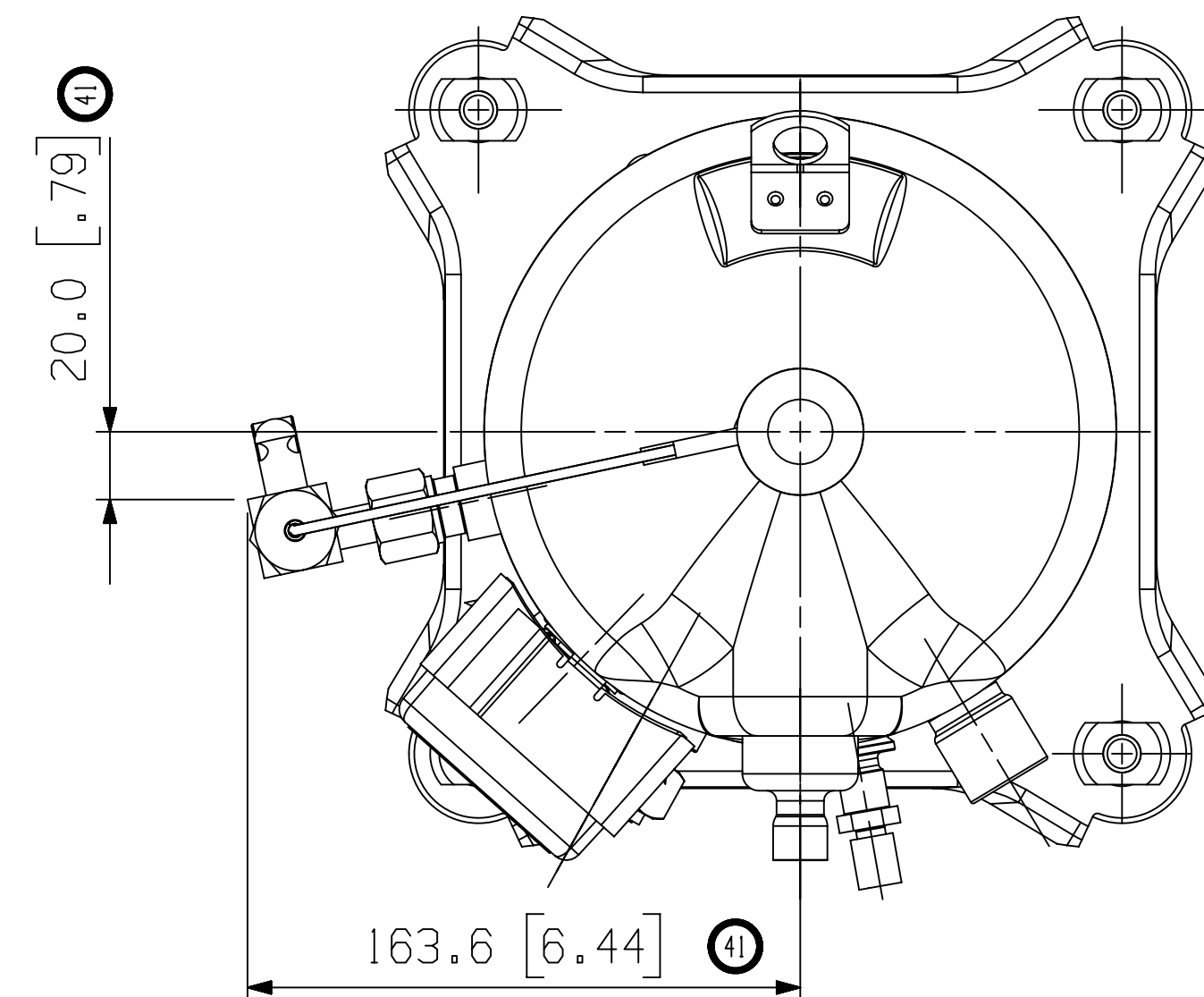
DO NOT SCALE DRAWING

CRITICAL PRODUCT CHARACTERISTICS

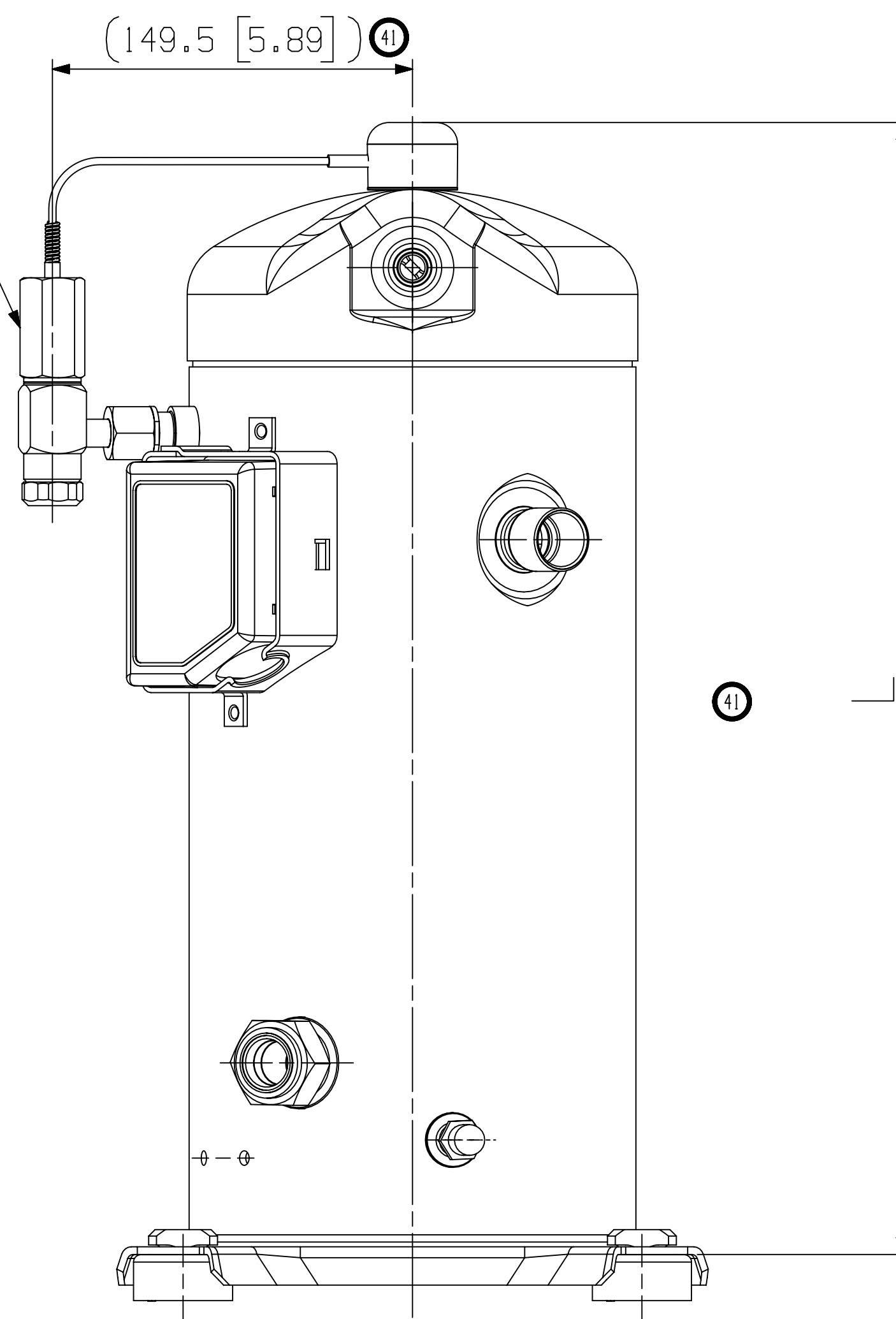
UNLESS OTHERWISE SPECIFIED
DIMENSIONS ARE MILLIMETER OR (INCH)

TOLERANCES:
1-PLACE +
2-PLACE ±
ANGULAR ±

1



41 DISCHARGE TEMPERATURE CONTROL VALVE (DTC) PER BOM



INTERPRET PER ASME Y14.5M-1994 AND EMERSON DESIGN STANDARDS DS2002

DO NOT SCALE DRAWING

CRITICAL PRODUCT CHARACTERISTICS

UNLESS OTHERWISE SPECIFIED DIMENSIONS ARE MILLIMETER OR (INCH)

TOLERANCES:

1-PLACE +

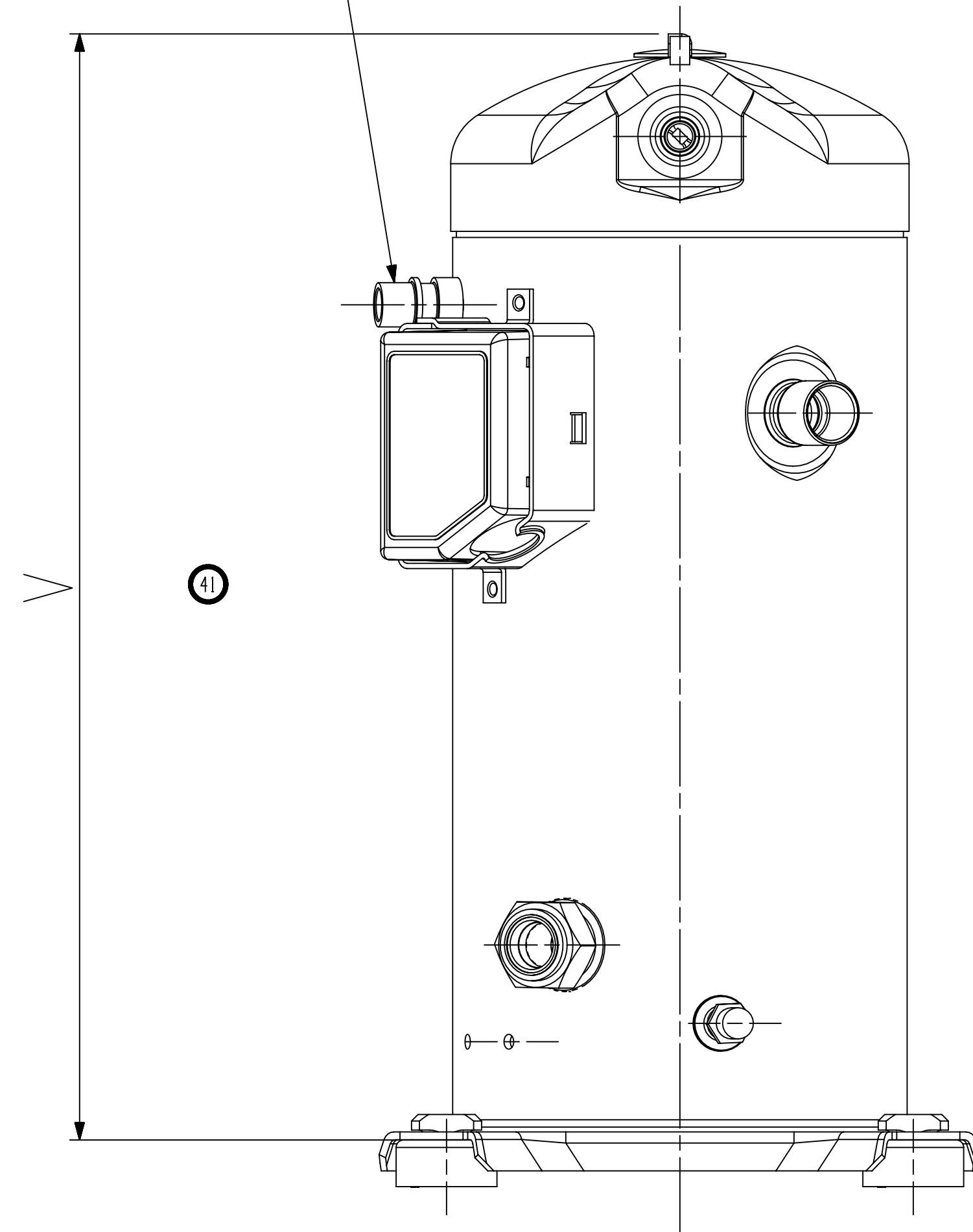
2-PLACE ±

ANGULAR ±

ECN321503	41	REVISED FOR MULTIPLE CHANGES	08-03-22	SPM	AMN
ECN312601	40	RELEASED - 18	11-15-19	IRK	VC
ECN300410	39	SEE SHEET 1	08-31-17	SVR	PR1
ECN300410	38	REDRAWN WITH CHANGES	06-28-17	JSK	PR1
32-1198-023	0	RELEASED	01-11-99	AJA	DAN

ENG NOTICE NO.	REV. NO.	REVISIONS	DATE	BY	CHKD
CONFIDENTIALITY NOTICE					
THIS DRAWING AND INFORMATION CONTAINED HEREIN ARE THE EXCLUSIVE PROPERTY OF EMERSON CLIMATE TECHNOLOGIES, INC AND/OR ITS AFFILIATES (COLLECTIVELY "EMERSON") AND SHALL BE RETURNED UPON DEMAND AND SHALL NOT BE REPRODUCED IN WHOLE OR IN PART, DISCLOSED TO ANYONE ELSE OR USED, WITHOUT THE WRITTEN CONSENT OF EMERSON.					
MATERIAL SPECIFICATION		DRAWN BY	SUPERSEDES DWG NO / REV NO		
N/A		JSK	497-3543-00 / 037		
		DATE	SCALE	DATE FORMAT:	
		06-28-17	1:2	MM-DD-YY	
TITLE			DRAWING NUMBER	SHEET 3 OF 4 DWG	
REF DWG-WELD COMP ASSM			497-3543-00	4	
			SIZE		

④1 ◆ ϕ 12.80 - 12.90 [0.504 - 0.508] I.D.
 $\sqrt{12.3}$ [0.48] MIN.
 0.010 [0.0004] MIN. THICK EXTERIOR
 AND 0.010 [0.0004] MIN. THICK INTERIOR
 COPPER PLATED STEEL VAPOT INJECTION
 FITTING



INTERPRET PER ASME
 Y14.5M-1994 AND
 EMERSON DESIGN
 STANDARDS DS2002

DO NOT SCALE DRAWING

CRITICAL PRODUCT CHARACTERISTICS

UNLESS OTHERWISE SPECIFIED
 DIMENSIONS ARE MILLIMETER OR (INCH)

TOLERANCES:
 1-PLACE +
 2-PLACE +
 ANGULAR ±

1

ENG NOTICE NO.	REV. NO.	REVISIONS	DATE	BY	CHKD
ECN321503	41	REVISED FOR MULTIPLE CHANGES	08-03-22	SPM	AMN
ECN312601	40	RELEASED - 18	11-15-19	IRK	VC
ECN300410	39	SEE SHEET 1	08-31-17	SVR	PR1
ECN300410	38	REDRAWN WITH CHANGES	06-28-17	JSK	PR1
32-1198-023	0	RELEASED	01-11-99	AJA	DAN

CONFIDENTIALITY NOTICE			
THIS DRAWING AND INFORMATION CONTAINED HEREIN ARE THE EXCLUSIVE PROPERTY OF EMERSON CLIMATE TECHNOLOGIES, INC AND/OR ITS AFFILIATES (COLLECTIVELY "EMERSON") AND SHALL BE RETURNED UPON DEMAND AND SHALL NOT BE REPRODUCED IN WHOLE OR IN PART, DISCLOSED TO ANYONE ELSE OR USED, WITHOUT THE WRITTEN CONSENT OF EMERSON.			
MATERIAL SPECIFICATION	DRAWN BY	SUPERSEDES DWG NO / REV NO	DATE
N/A	JSK	497-3543-00 / 037	06-28-17
TITLE	SCALE	DATE FORMAT:	DRAWING NUMBER
REF DWG-WELD COMP ASSM	1:2	MM-DD-YY	497-3543-00
			SHEET 4 OF 4 DWG
			4
			SIZE