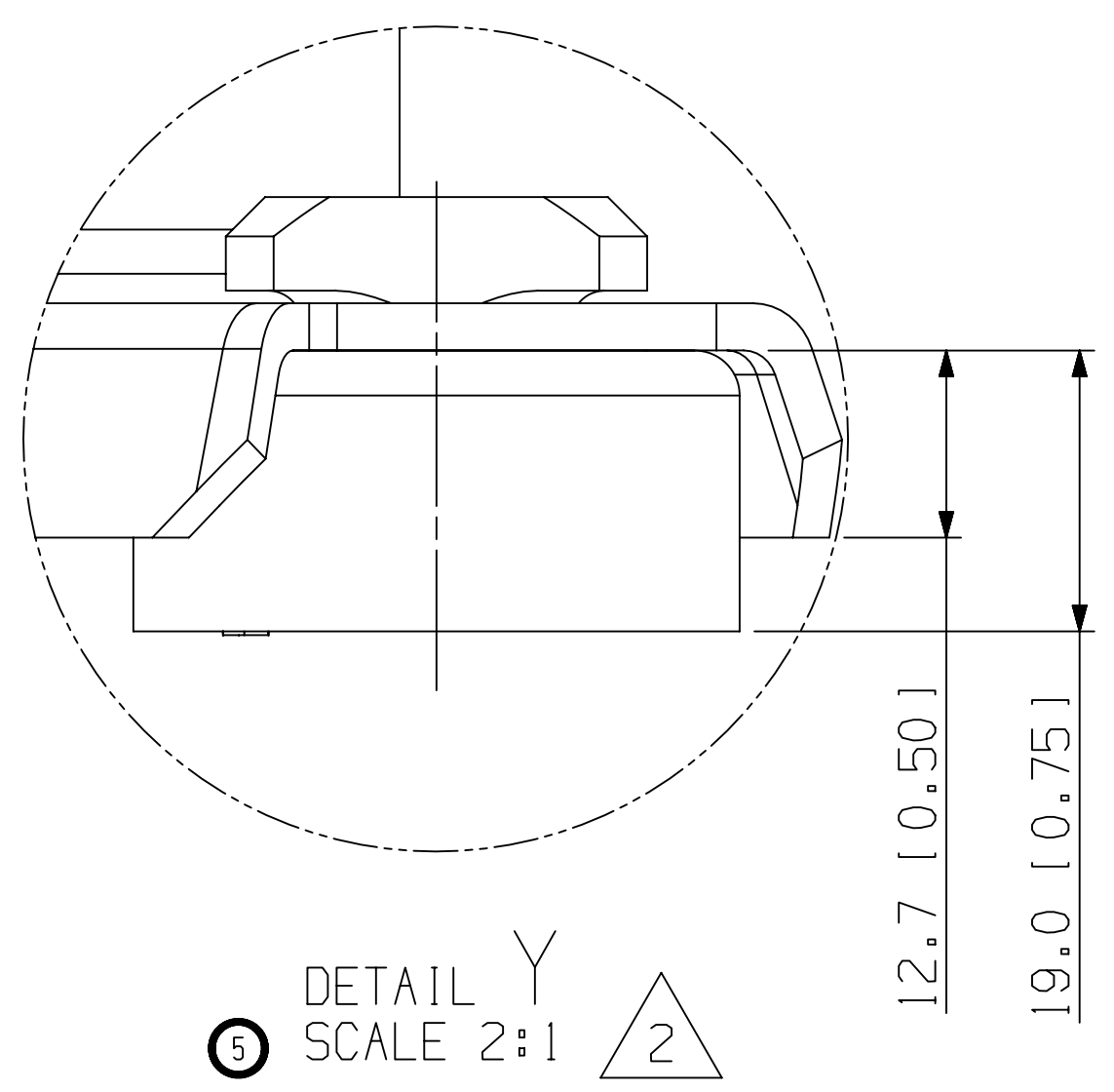
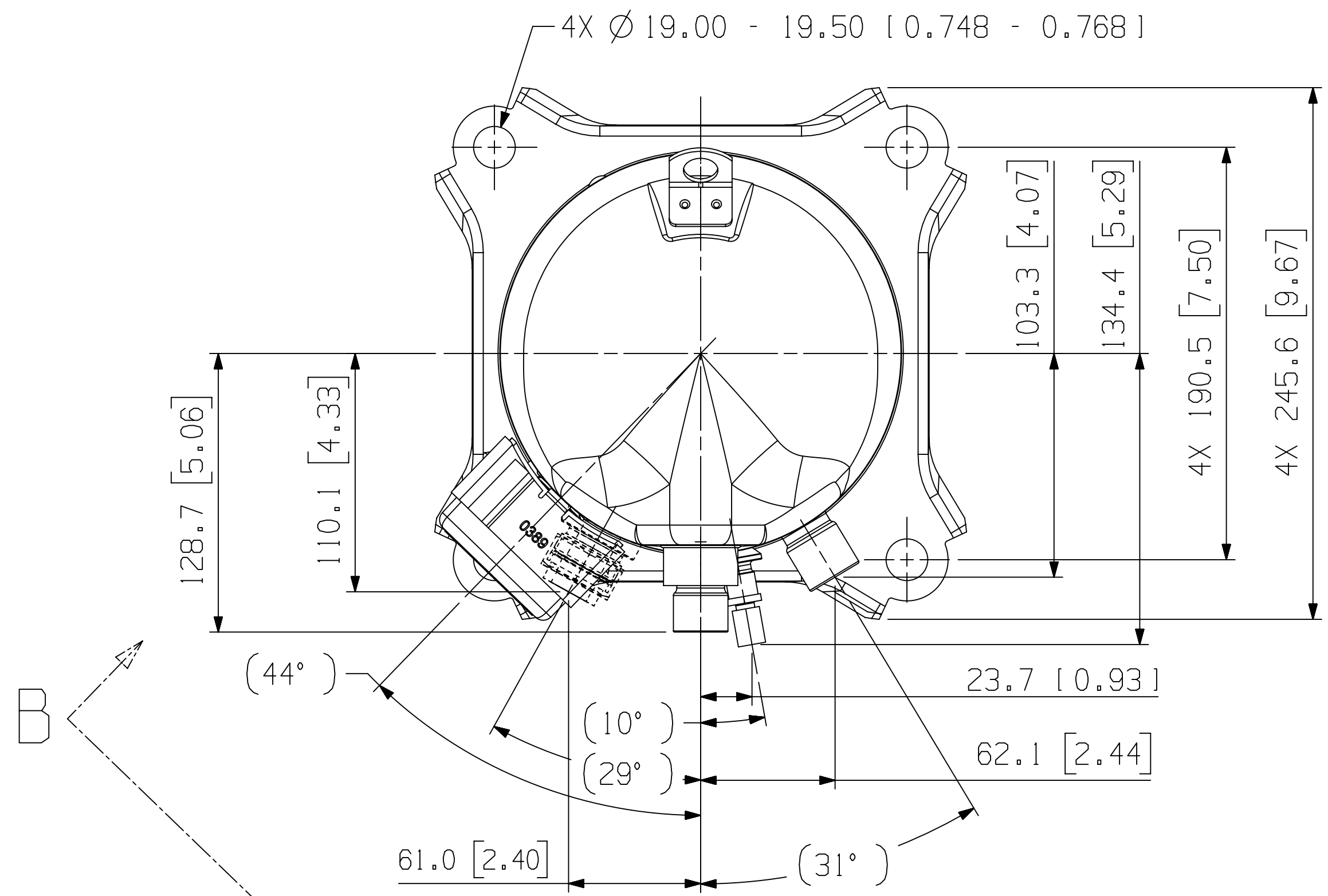


PART NUMBER	MODEL NUMBER	A	E	F ±3.0
497-0876-00	ZB48KC*-***	246.0 [9.69]	243.4 [9.58]	233.2 [9.18]
497-0876-01	ZB48KCE-***-580	263.0 [10.35]	257.6 [10.14]	225.3 [8.87]

MOTOR TYPE	Ø K PIN CIRCLE
PFJ PFV TF5	13.46 [0.530]
TFD TFE TF7	17.45 [0.687]

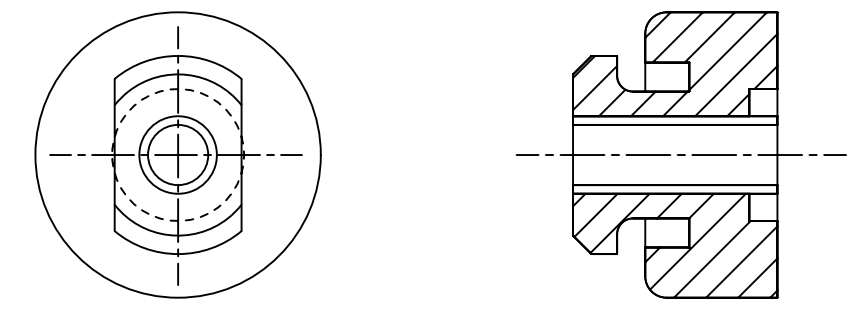
SPECIFICATIONS	
ES NO.	DESCRIPTION
ES92-155	CONVERSION-METRIC



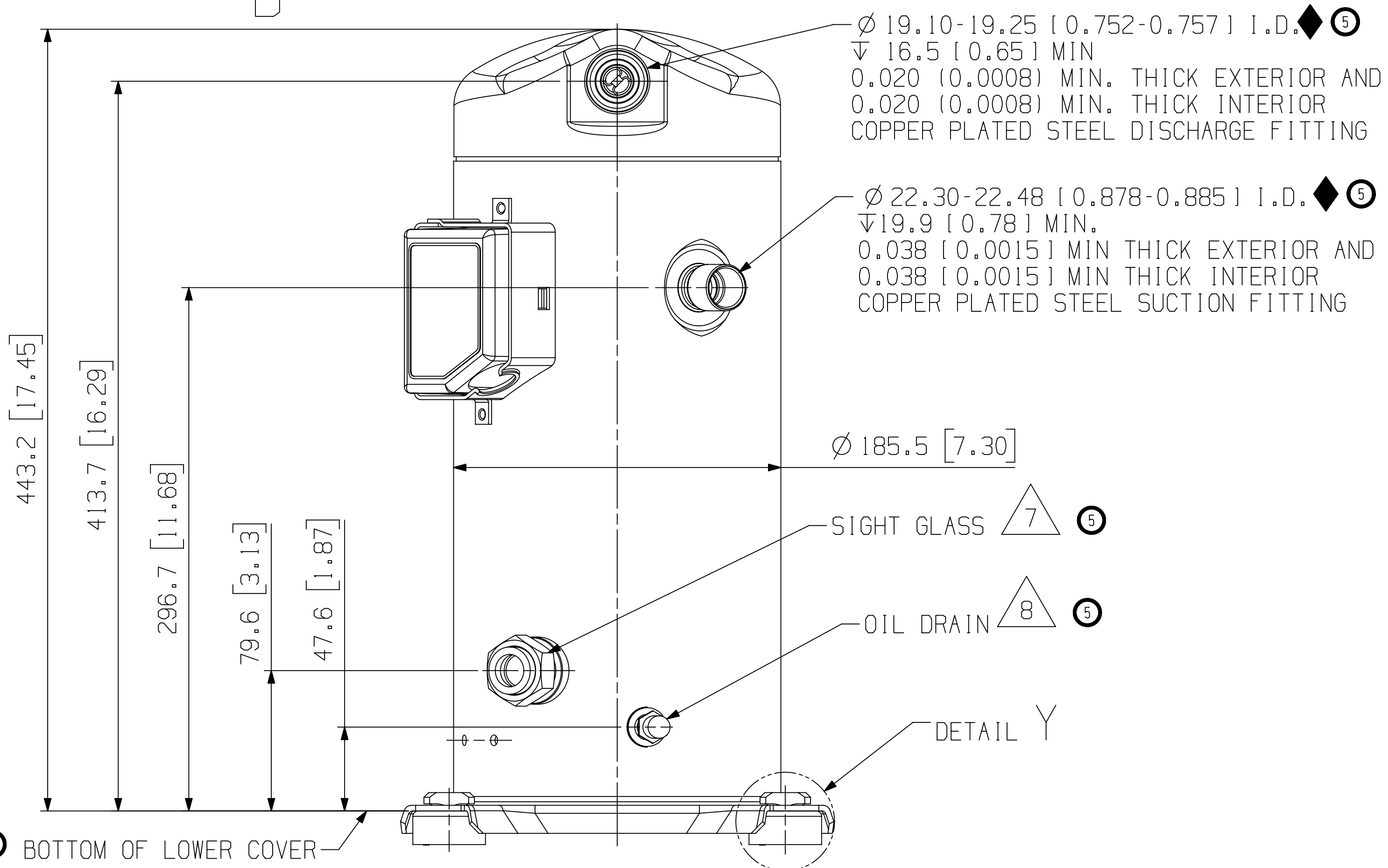
NOTES:
 1 ALL TOLERANCES ± 1.50 [0.060] UNLESS OTHERWISE SPECIFIED.
 DUE TO ACCUMULATED ASSEMBLY TOLERANCES THE LISTED COMPONENTS MAY VARY FROM THE MOUNTING HOLES AS SHOWN BELOW:

- ◆ SUCTION FITTINGS : ± 3.0 [0.12]
- ◆ DISCHARGE FITTINGS : ± 3.0 [0.12]

GROMMET DUROMETER	4 FOOT KIT
35-45	527-0116-00



- 2 MOUNTING KIT.
- 3. TUBE ENDS MUST BE PLUGGED.
- 4 TORQUE T-BLOCK SCREWS TO 2.4-2.6 N-M [21-23 IN-LBS].
- 5 TORQUE STUD NUTS TO 3.6-4.4 N-M [32-39 IN-LBS].
- 6 TORQUE T-BOX COVER SCREWS TO 1.0-1.2 N-M [9-11 IN-LBS].
- 7 TORQUE SIGHT GLASS TO 45.5-53.6 N-M [405-475 IN-LBS].
- 8 TORQUE OIL DRAIN TO 4.5-6.8 N-M [40-60 IN-LBS].



INTERPRET PER ASME
 Y14.5M-1994 AND
 EMERSON DESIGN
 STANDARDS DS2002

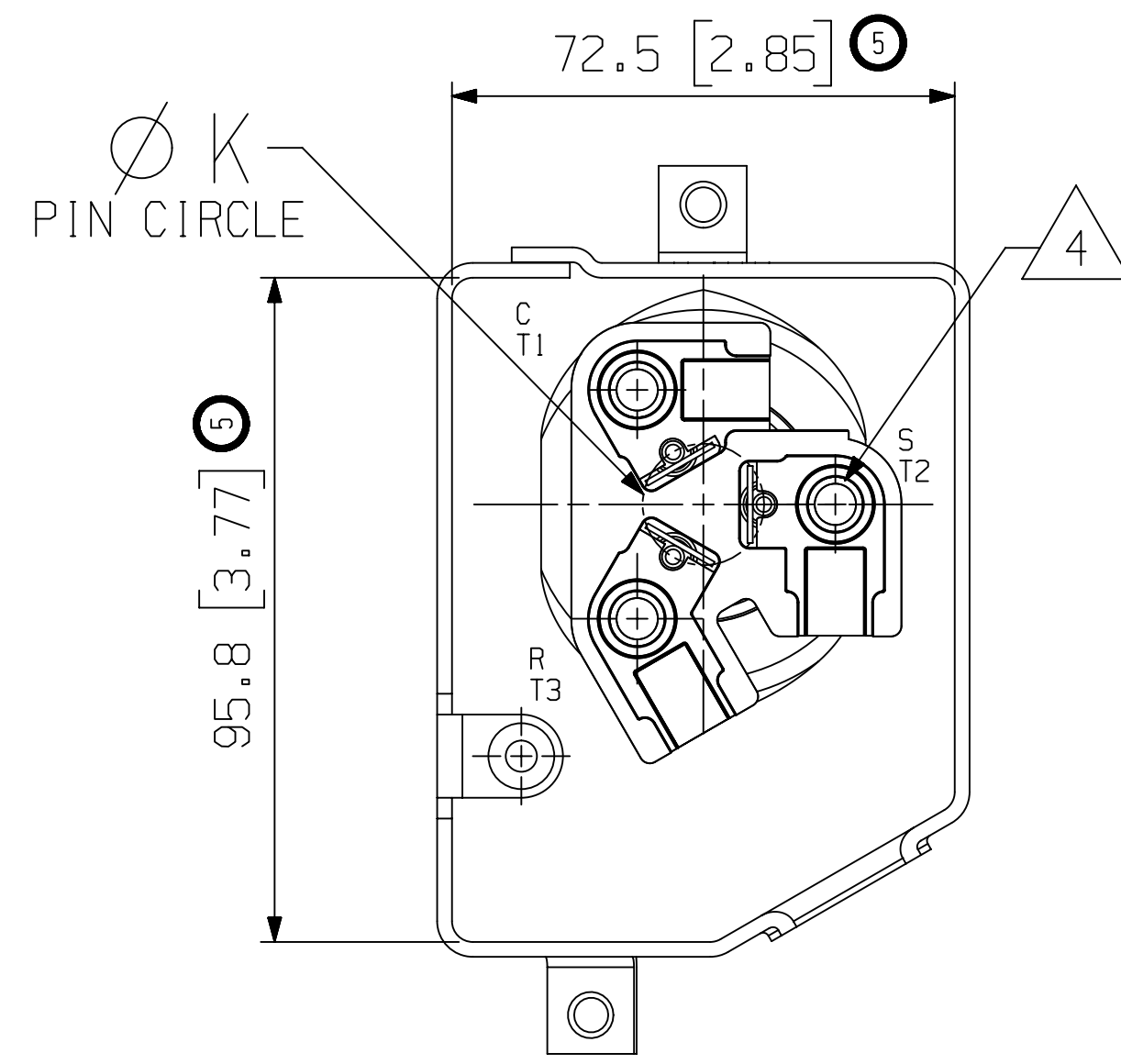
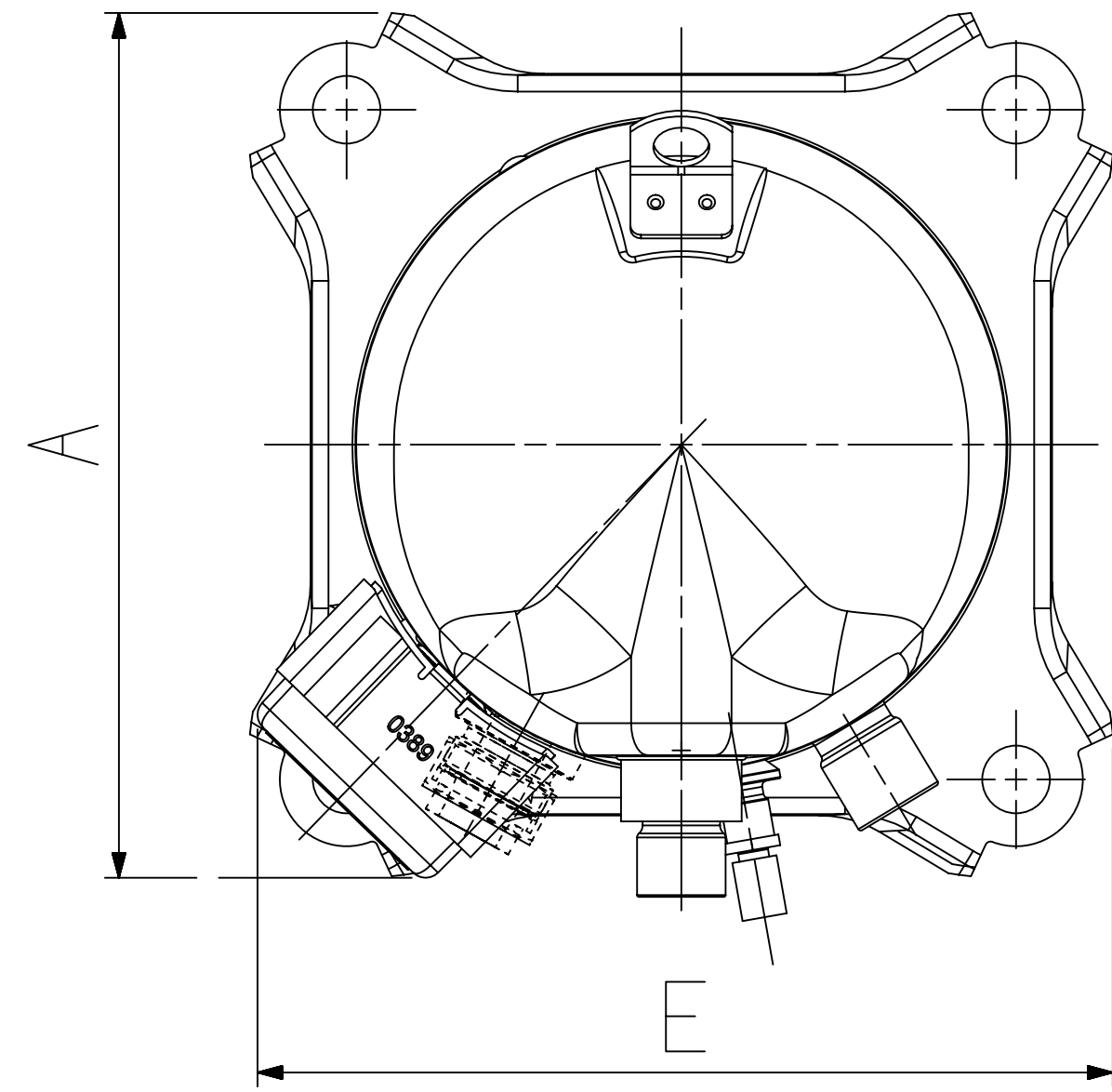
DO NOT SCALE DRAWING

CRITICAL PRODUCT CHARACTERISTICS

UNLESS OTHERWISE SPECIFIED
 DIMENSIONS ARE MILLIMETER OR (INCH)
 TOLERANCES:
 1-PLACE ±
 2-PLACE ±
 ANGULAR ± N/A

ECN314933	5	REDRAWN WITH CHANGES	04-24-20	JSK	YKN
ECN001791	0	RELEASED	06-22-09	VDJ	DC
ENG NOTICE NO.	REV. NO.	REVISIONS	DATE	BY	CHKD
CONFIDENTIALITY NOTICE					
THIS DRAWING AND INFORMATION CONTAINED HEREIN ARE THE EXCLUSIVE PROPERTY OF EMERSON CLIMATE TECHNOLOGIES, INC AND/OR ITS AFFILIATES (COLLECTIVELY "EMERSON") AND SHALL BE RETURNED UPON DEMAND AND SHALL NOT BE REPRODUCED IN WHOLE OR IN PART, DISCLOSED TO ANYONE ELSE OR USED, WITHOUT THE WRITTEN CONSENT OF EMERSON.					
MATERIAL SPECIFICATION		DRAWN BY	SUPERSEDES DWG NO / REV NO	REV NO	
N/A		DATE	SCALE	DATE FORMAT:	
		04-24-20	1:2	MM-DD-YY	
TITLE			DRAWING NUMBER	SHEET 1 OF 2 DWG	
REF DWG-WELD COMP ASSM			497-0876-00	4	
				SIZE	

METAL FENCE DESIGN



TERMINAL BOX LAYOUT OPTIONS
TERMINAL BOX COVER NOT SHOWN
VIEW B-B
SCALE 1:1

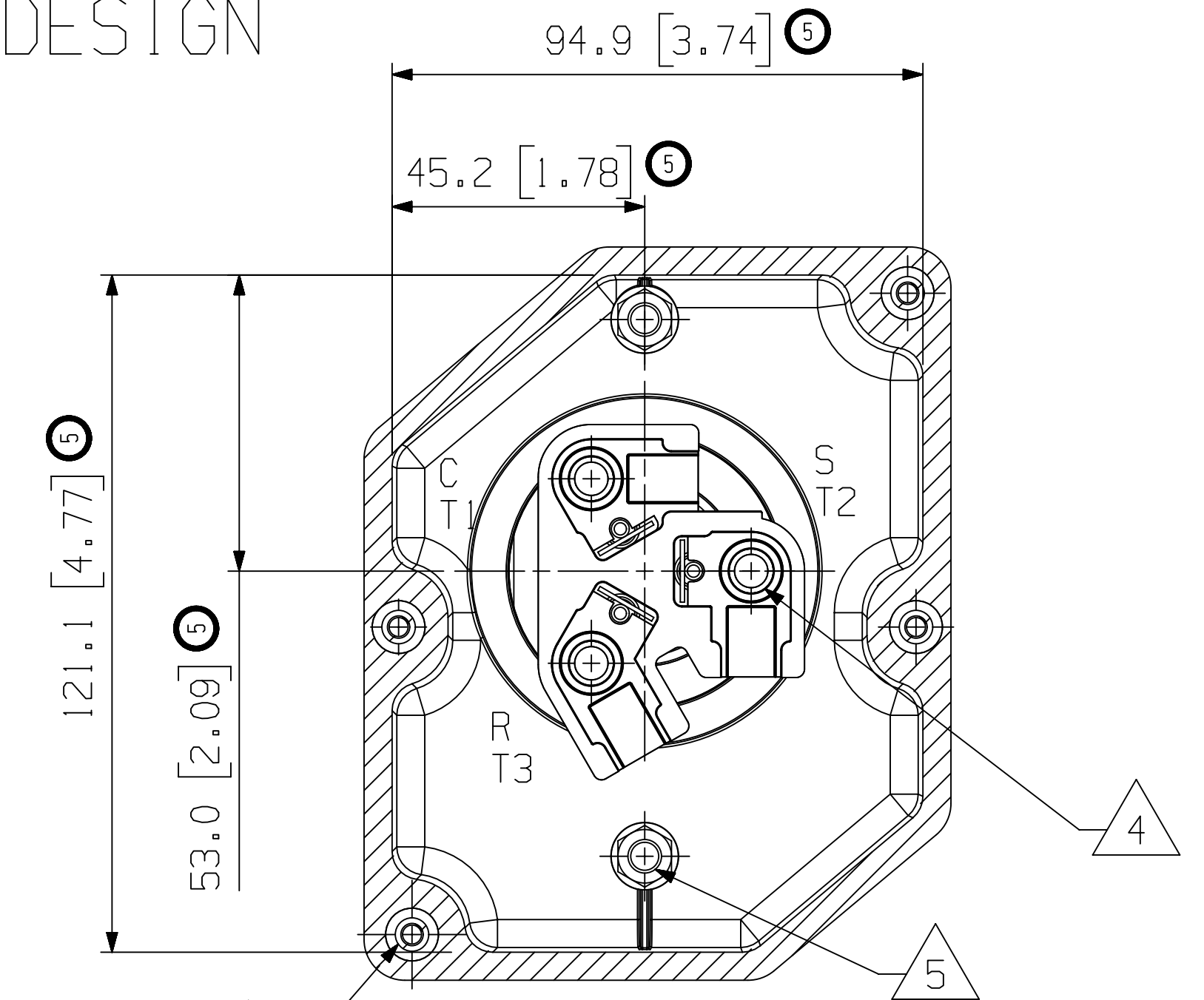
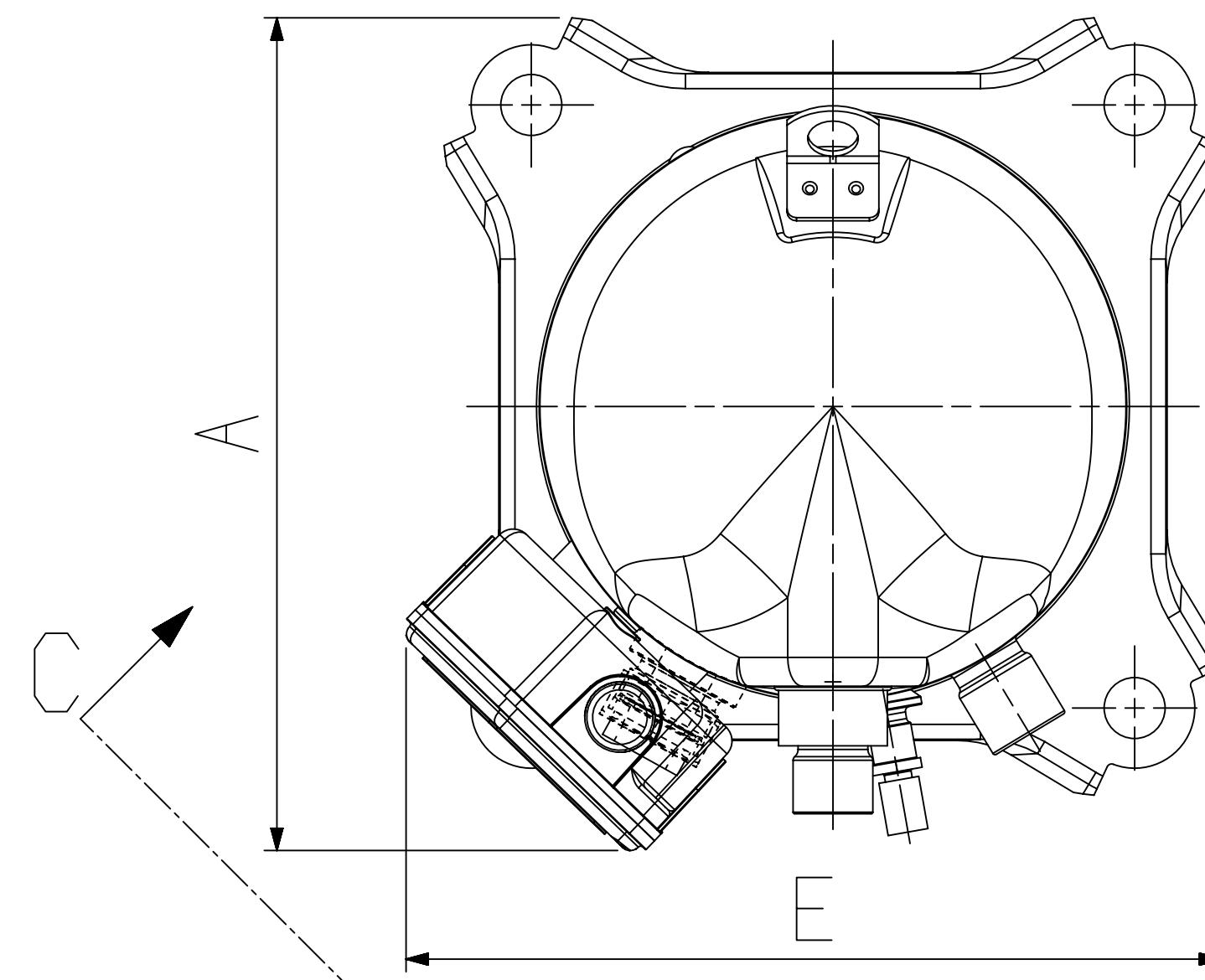
COMPRESSOR WIRING DIAGRAM

THREE PHASE MOTOR WITH
INTERNAL PROTECTION

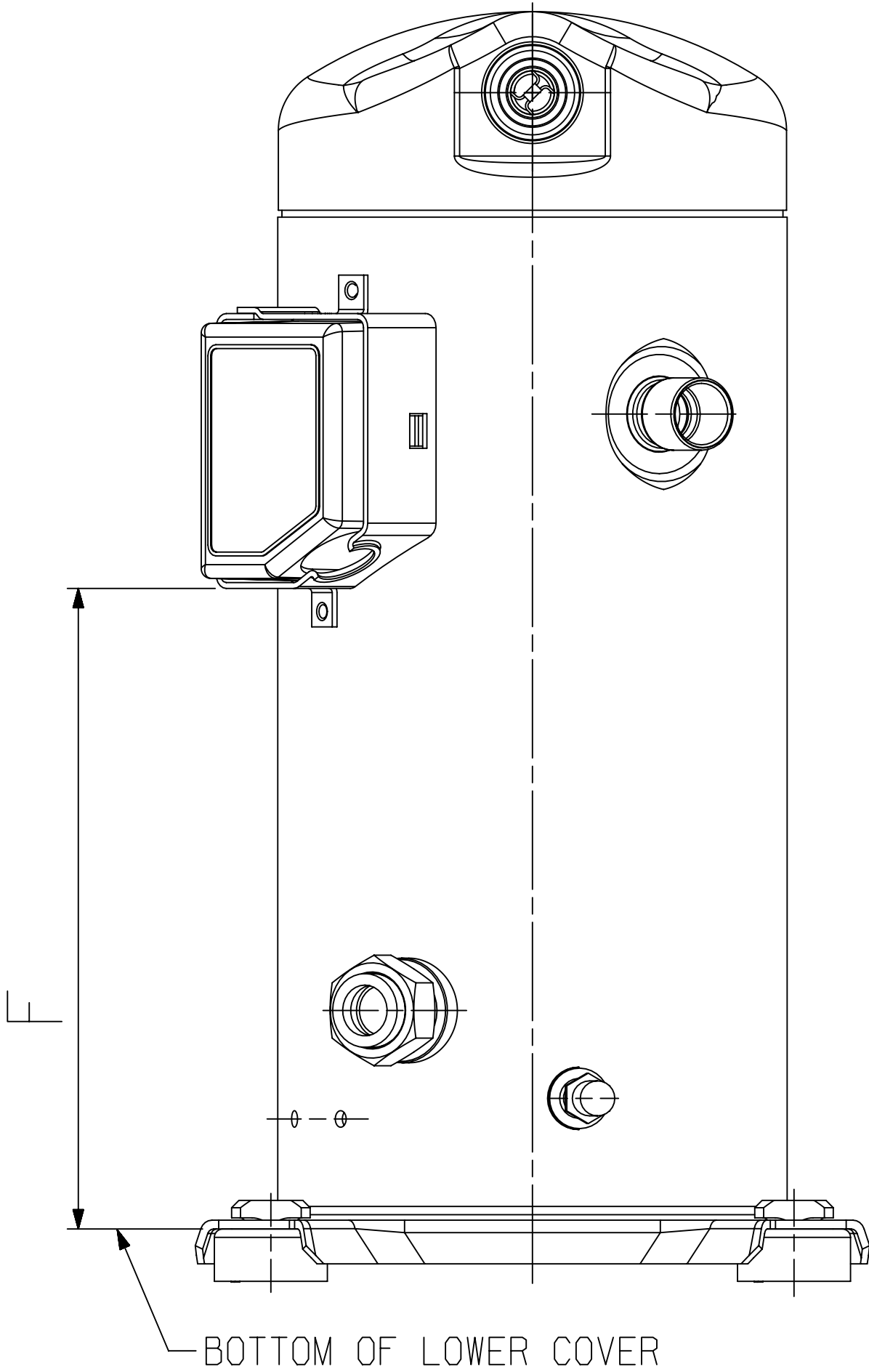
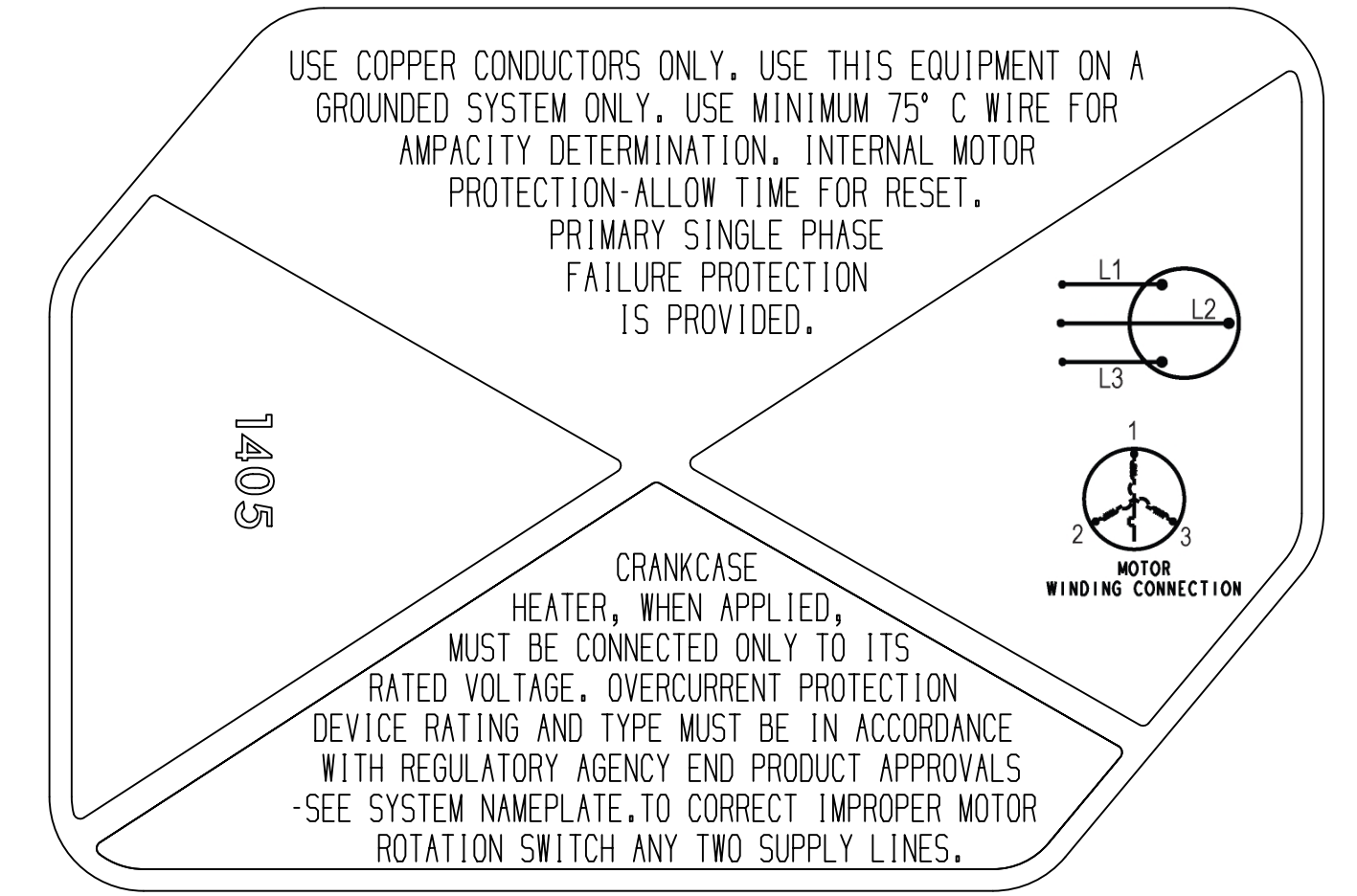
USE COPPER CONDUCTORS ONLY. USE MINIMUM 75° C WIRE FOR AMPACITY DETERMINATION. INTERNAL MOTOR PROTECTION - ALLOW TIME FOR RESET. OVERCURRENT PROTECTION DEVICE RATING AND TYPE MUST BE IN ACCORDANCE WITH REGULATORY AGENCY END PRODUCT APPROVALS - SEE SYSTEM NAMEPLATE. CRANKCASE HEATER, WHEN APPLIED, MUST BE CONNECTED ONLY TO ITS RATED VOLTAGE. TO CORRECT IMPROPER ROTATION OF THREE PHASE MODELS, SWITCH ANY TWO SUPPLY LINES. REFER TO THE APPLICABLE SYSTEM WIRING DIAGRAM.

006-1213-00
XX
8-06

WELD STUD DESIGN



TERMINAL BOX LAYOUT OPTIONS
TERMINAL BOX COVER NOT SHOWN
VIEW C-C
SCALE 1:1



OPTIONAL VIEW
PER BILL OF MATERIAL
BOTTOM OF LOWER COVER



INTERPRET PER ASME
Y14.5M-1994 AND
EMERSON DESIGN
STANDARDS DS2002

DO NOT SCALE DRAWING

CRITICAL PRODUCT
CHARACTERISTICS

UNLESS OTHERWISE SPECIFIED
DIMENSIONS ARE MILLIMETER OR (INCH)
TOLERANCES:
1-PLACE ± .1
2-PLACE ± .05
ANGULAR ± N/A

ENG NOTICE NO.	REV.NO.	REVISIONS	DATE	BY	CHKD
ECN314933	5	REDRAWN WITH CHANGES	04-24-20	JSK	YKN
ECN001791	0	RELEASED	06-22-09	VDJ	DC
CONFIDENTIALITY NOTICE					
THIS DRAWING AND INFORMATION CONTAINED HEREIN ARE THE EXCLUSIVE PROPERTY OF EMERSON CLIMATE TECHNOLOGIES, INC AND/OR ITS AFFILIATES (COLLECTIVELY "EMERSON") AND SHALL BE RETURNED UPON DEMAND AND SHALL NOT BE REPRODUCED IN WHOLE OR IN PART, DISCLOSED TO ANYONE ELSE OR USED, WITHOUT THE WRITTEN CONSENT OF EMERSON.					
MATERIAL SPECIFICATION		DRAWN BY	SUPERSEDES DWG NO / REV NO	REV NO	
N/A		JSK	497-0876-00 / 004	004	
		DATE	SCALE	DATE FORMAT:	
		04-24-20	1:2	MM-DD-YY	
TITLE			DRAWING NUMBER	SHEET 2 OF 2 DWG	
REF DWG-WELD COMP ASSM			497-0876-00	4	
			SIZE		
			4		