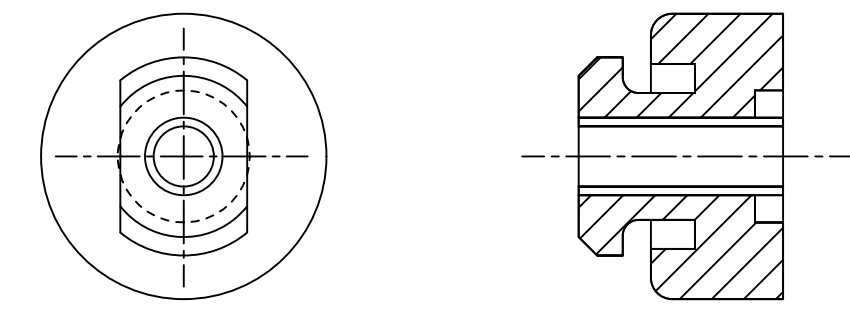


PART NO.	MODEL NUMBER	7		6		5		4		3		2		1	
		A ±3.0	B ±3.0	C ±3.0	D ±3.0	E ±3.0	F ±3.0	G ±3.0	SUCTION FITTING		SPECIFICATIONS		ES NO.	DESCRIPTION	
											ES92-155	CONVERSION-METRIC			
497-3542-00	ZF06/08K4E ZF06KQE	369.9 [14.56]	343.8 [13.54]	280.0 [11.02]	244.5 [9.62]	202.9 [7.99]	69.6 [2.74]	44.1 [1.74]	H	32					
497-3542-01	ZF08/09K4E ZF08/09KQE	392.5 [15.45]	366.4 [14.42]	302.6 [11.91]	264.4 [10.41]	222.8 [8.77]	75.3 [2.96]	49.8 [1.96]	H	32					
497-3542-02	ZF11K4E ZF11KQE	406.3 [16.00]	380.1 [14.96]	316.4 [12.46]	277.1 [10.91]	235.5 [9.27]	75.3 [2.96]	49.8 [1.96]	H	32					
497-3542-03	ZS15K4*	369.9 [14.56]	343.8 [13.54]	△3	244.5 [9.62]	202.9 [7.99]	69.6 [2.74]	44.1 [1.74]	H						
497-3542-04	ZS19K4* ZS21K4*	392.5 [15.45]	366.4 [14.42]	△3	264.4 [10.41]	222.8 [8.77]	75.3 [2.96]	49.8 [1.96]	H						
497-3542-05	ZS26K4*	406.3 [16.00]	380.1 [14.96]	△3	277.1 [10.91]	235.5 [9.27]	75.3 [2.96]	49.8 [1.96]	H						
497-3542-06	ZB15KC* ZB19KC*	369.9 [14.56]	343.8 [13.54]	△3	244.5 [9.62]	202.9 [7.99]	69.6 [2.74]	44.1 [1.74]	H						
497-3542-07	ZB21KC*	392.5 [15.45]	366.4 [14.42]	△3	264.4 [10.41]	222.8 [8.77]	75.3 [2.96]	49.8 [1.96]	H						
497-3542-08	ZB26KC/KCE	406.3 [16.00]	380.1 [14.96]	△3	277.1 [10.91]	235.5 [9.27]	75.3 [2.96]	49.8 [1.96]	H						
497-3542-14	ZS21K4E-XXX-426	392.5 [15.45]	366.4 [14.42]	△3	264.4 [10.41]	222.8 [8.77]	75.3 [2.96]	OMIT	H						
497-3542-28	ZF06K4E-XXX-524	369.9 [14.56]	343.8 [13.54]	280.0 [11.02]	241.8 [9.52]	200.2 [7.88]	OMIT	OMIT	H						
497-3542-29	ZB29KCE	423.3 [16.66]	397.1 [15.63]	△3	294.1 [11.58]	252.5 [9.94]	75.3 [2.96]	49.8 [1.96]	J						
497-3542-30	ZB15KC/KCE-XXX-205 ZB19KCE-XXX-205	369.9 [14.56]	343.8 [13.54]	△3	244.5 [9.62]	202.9 [7.99]	OMIT	OMIT	H						
497-3542-31	ZB21KCE-XXX-205	392.5 [15.45]	366.4 [14.42]	△3	264.4 [10.41]	222.8 [8.77]	OMIT	OMIT	H						
497-3542-32	ZB26KC/KCE-XXX-205	406.3 [16.00]	380.1 [14.96]	△3	277.1 [10.91]	235.5 [9.27]	OMIT	OMIT	H						
497-3542-33	ZS26K4E-XXX-426	406.3 [16.00]	380.1 [14.96]	△3	277.1 [10.91]	235.5 [9.27]	75.3 [2.96]	OMIT	H						

NOTES:

- 1. ALL TOLERANCES ±1.5 [0.06] UNLESS OTHERWISE SPECIFIED.
- DUE TO ACCUMULATED ASSEMBLY TOLERANCES THE LISTED COMPONENTS MAY VARY FROM THE MOUNTING HOLES AS SHOWN BELOW:
- ◆ SUCTION FITTING : ±3.0 [0.12]
◆ DISCHARGE FITTING: ±3.0 [0.12]
- 2. TUBE ENDS MUST BE PLUGGED.
- 3. INJECTION FITTING & THERMOSTAT TUBE OMITTED.
- 4. FOR MORE INFORMATION SEE PRODUCT CATALOG.
- 5. FULL HEIGHT OF COMPRESSOR DOES NOT INCLUDE MOUNTING SPACERS.
- 6. MOUNTING KIT:

GROMMET DUROMETER	4 FOOT KIT
35-45	527-0116-00



COMPRESSOR WIRING DIAGRAM

USE COPPER CONDUCTORS ONLY. USE MINIMUM 75° C WIRE FOR AMPACITY DETERMINATION. INTERNAL MOTOR PROTECTION - ALLOW TIME FOR RESET. OVERCURRENT PROTECTION DEVICE RATING AND TYPE MUST BE IN ACCORDANCE WITH REGULATORY AGENCY END PRODUCT APPROVALS - SEE SYSTEM NAMEPLATE. CRANKCASE HEATER, WHEN APPLIED, MUST BE CONNECTED ONLY TO ITS RATED VOLTAGE. TO CORRECT IMPROPER ROTATION OF THREE PHASE MODELS, SWITCH ANY TWO SUPPLY LINES. REFER TO THE APPLICABLE SYSTEM WIRING DIAGRAM.

005-1270-00

8-06

ECN321503	32	REDRAWN WITH CHANGES	08-02-22	SPM	AMN
32-1198-023	0	RELEASED	01-11-99	AJA	DAN
ENG NOTICE NO.	REV. NO.	REVISIONS	DATE	BY	CHKD

CONFIDENTIALITY NOTICE					
10	THIS DRAWING AND INFORMATION CONTAINED HEREIN ARE THE EXCLUSIVE PROPERTY OF EMERSON CLIMATE TECHNOLOGIES, INC AND/OR ITS AFFILIATES (COLLECTIVELY "EMERSON") AND SHALL BE RETURNED UPON DEMAND AND SHALL NOT BE REPRODUCED IN WHOLE OR IN PART, DISCLOSED TO ANYONE ELSE OR USED, WITHOUT THE WRITTEN CONSENT OF EMERSON.				
MATERIAL SPECIFICATION		DRAWN BY	SUPERSEDES DWG NO / REV NO	DATE FORMAT: MM-DD-YY	
N/A		SPM	497-3542-00 / 031	MM-DD-YY	
TITLE		DATE	SCALE	DRAWING NUMBER	
REF DWG-WELD COMP ASSM		08-02-22	1:2	497-3542-00	
			SHEET 1 OF 4	4	
			SIZE	4	

EMERSON

Copeland™

INTERPRET PER ASME Y14.5M-1994 AND EMERSON DESIGN STANDARDS DS2002

DO NOT SCALE DRAWING

CRITICAL PRODUCT CHARACTERISTICS

UNLESS OTHERWISE SPECIFIED DIMENSIONS ARE MILLIMETER OR (INCH)

TOLERANCES:
1-PLACE :
2-PLACE :
ANGULAR :

1

© COPYRIGHT EMERSON - CONFIDENTIAL

PART NO.	MODEL NUMBER	A ±3.0	B ±3.0	C ±3.0	D ±3.0	E ±3.0	F ±3.0	G ±3.0	SUCTION FITTING
497-3542-34	ZF109KQE*	369.9 [14.56]	343.8 [13.54]	280.0 [11.02]	244.5 [9.62]	202.9 [7.99]	69.6 [2.74]	44.1 [1.74]	H
497-3542-35	ZF113KQE*	392.5 [15.45]	366.4 [14.42]	302.6 [11.91]	264.4 [10.41]	222.8 [8.77]	75.3 [2.96]	49.8 [1.96]	H
497-3542-36	ZF117KQE*	406.3 [16.00]	380.1 [14.96]	316.4 [12.46]	277.1 [10.91]	235.5 [9.27]	75.3 [2.96]	49.8 [1.96]	H

ECN321503	32	REDRAWN WITH CHANGES	08-02-22	SPM	AMN
32-1198-023	0	RELEASED	01-11-99	AJA	DAN
ENG NOTICE NO.	REV. NO.	REVISIONS	DATE	BY	CHKD
10		CONFIDENTIALITY NOTICE			
THIS DRAWING AND INFORMATION CONTAINED HEREIN ARE THE EXCLUSIVE PROPERTY OF EMERSON CLIMATE TECHNOLOGIES, INC AND/OR ITS AFFILIATES (COLLECTIVELY "EMERSON") AND SHALL BE RETURNED UPON DEMAND AND SHALL NOT BE REPRODUCED IN WHOLE OR IN PART, DISCLOSED TO ANYONE ELSE OR USED, WITHOUT THE WRITTEN CONSENT OF EMERSON.					
MATERIAL SPECIFICATION		DRAWN BY	SUPERSEDES DWG NO / REV NO		
N/A		SPM	497-3542-00 / 031		
		DATE	SCALE	DATE FORMAT:	
		08-02-22	1:2	MM-DD-YY	
TITLE			DRAWING NUMBER	SHEET 2 OF 4 DWG	
REF DWG-WELD COMP ASSM			497-3542-00	4	
			SIZE		
			UNCONTROLLED - DO NOT MODIFY		

EMERSON
Copeland

INTERPRET PER ASME Y14.5M-1994 AND EMERSON DESIGN STANDARDS DS2002

DO NOT SCALE DRAWING

CRITICAL PRODUCT CHARACTERISTICS

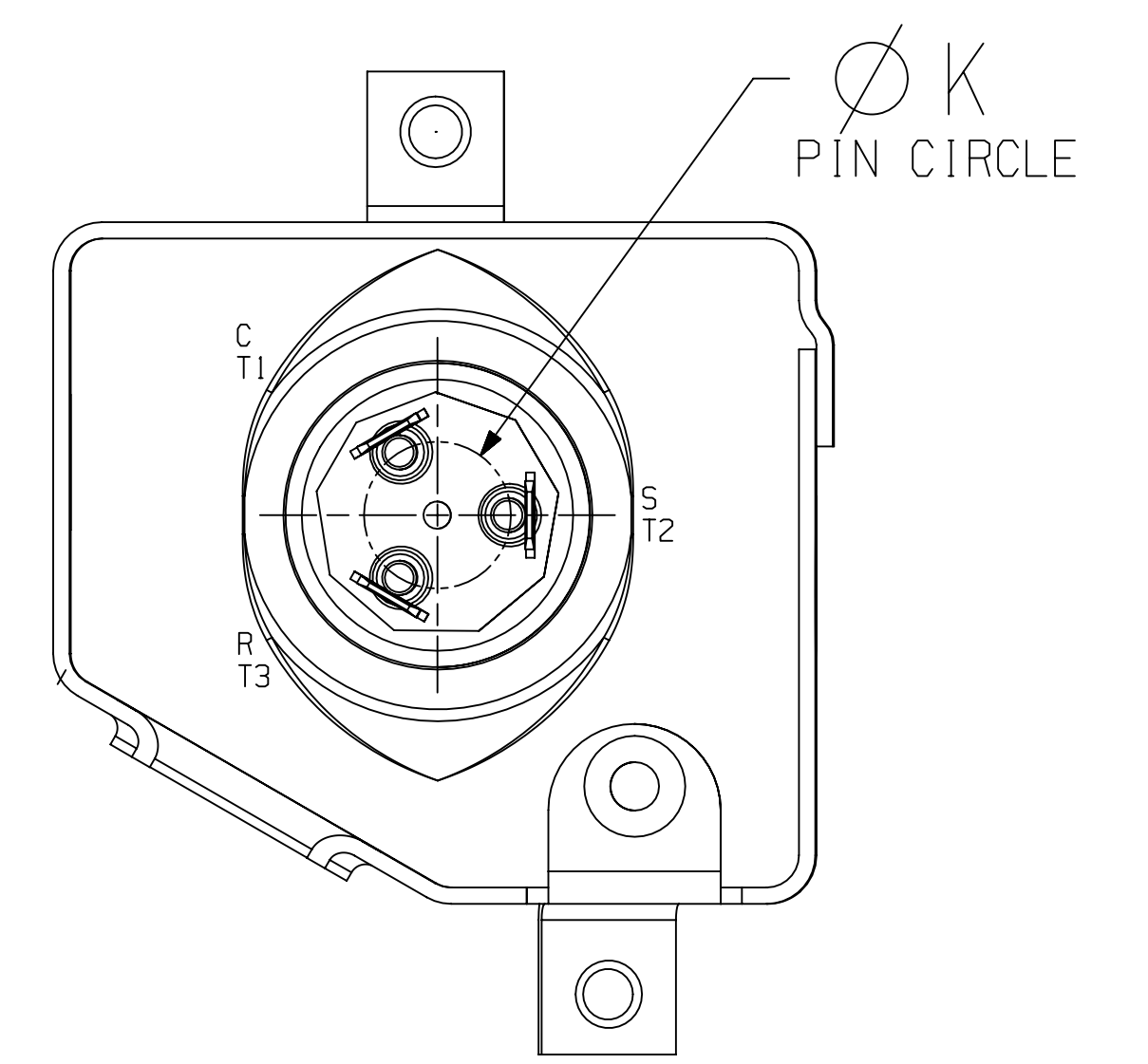
UNLESS OTHERWISE SPECIFIED DIMENSIONS ARE MILLIMETER OR (INCH)

TOLERANCES:
1-PLACE ±
2-PLACE ±
ANGULAR ±

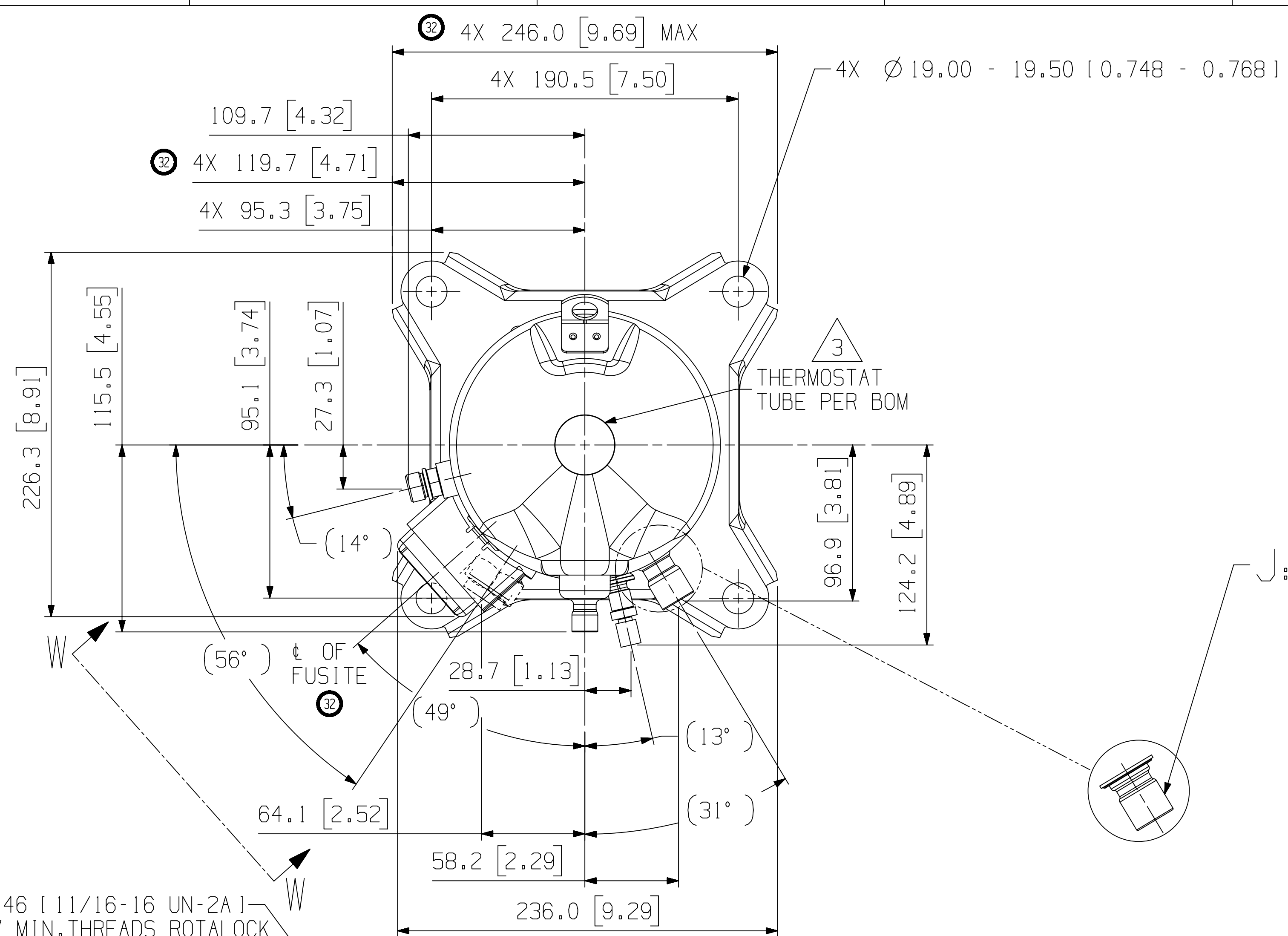
1

© COPYRIGHT EMERSON - CONFIDENTIAL

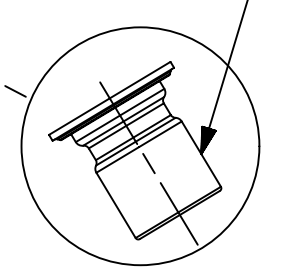
MOTOR TYPE	Ø K PIN CIRCLE
PFJ PFV TF5	13.46 [0.530]
TFD TFE	17.45 [0.687]



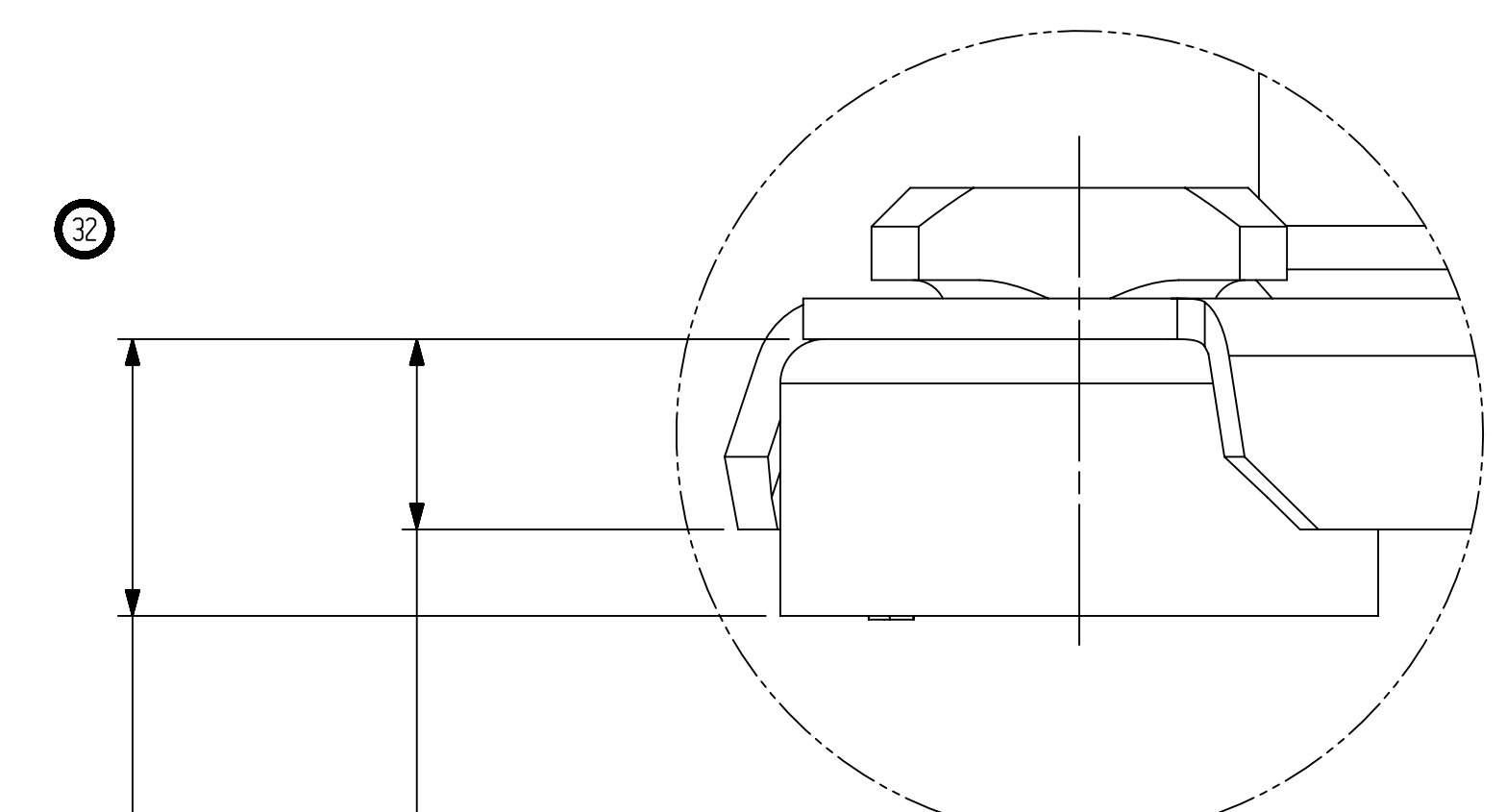
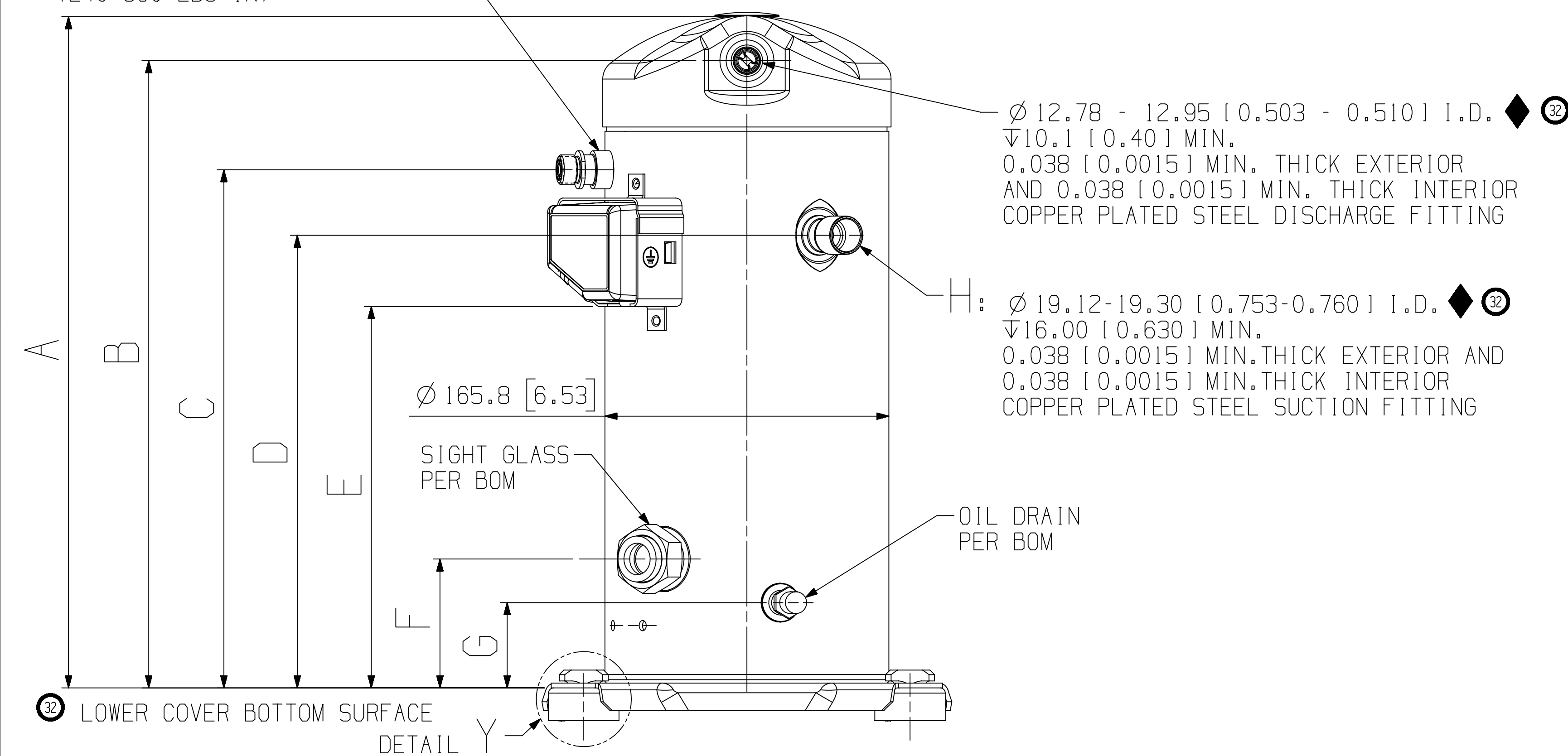
VIEW W-W
SCALE 2:1



J: Ø 22.30-22.48 [0.878-0.885] I.D. ◆ 32
 √19.9 [0.78] MIN.
 0.038 [0.0015] MIN. THICK EXTERIOR AND
 0.038 [0.0015] MIN. THICK INTERIOR
 COPPER PLATED STEEL SUCTION FITTING.



3
 32 Ø 17.46 [11/16-16 UN-2A] √8.47 MIN. THREADS ROTALOCK LIQUID INJECTION FITTING TORQUE RANGE 27.1-40.7 N-M (240-360 LBS-IN)



DETAIL Y
SCALE 2:1

32
 19.0 [0.751]
 13.1 [0.521]

ECN321503	32	REDRAWN WITH CHANGES	08-02-22	SPM	AMN
32-1198-023	0	RELEASED	01-11-99	AJA	DAN
ENG NOTICE NO.	REV. NO.	REVISIONS	DATE	BY	CHKD
10		CONFIDENTIALITY NOTICE			
THIS DRAWING AND INFORMATION CONTAINED HEREIN ARE THE EXCLUSIVE PROPERTY OF EMERSON CLIMATE TECHNOLOGIES, INC AND/OR ITS AFFILIATES (COLLECTIVELY "EMERSON") AND SHALL BE RETURNED UPON DEMAND AND SHALL NOT BE REPRODUCED IN WHOLE OR IN PART, DISCLOSED TO ANYONE ELSE OR USED, WITHOUT THE WRITTEN CONSENT OF EMERSON.					
MATERIAL SPECIFICATION		DRAWN BY	SUPERSEDES DWG NO / REV NO	DATE	
N/A		SPM	497-3542-00 / 031	SCALE	DATE FORMAT:
		DATE	08-02-22	1:2	MM-DD-YY
TITLE			DRAWING NUMBER	SHEET 3 OF 4 DWG	
REF DWG-WELD COMP ASSM			497-3542-00	4 SIZE	

EMERSON
Copeland

INTERPRET PER ASME Y14.5M-1994 AND EMERSON DESIGN STANDARDS DS2002

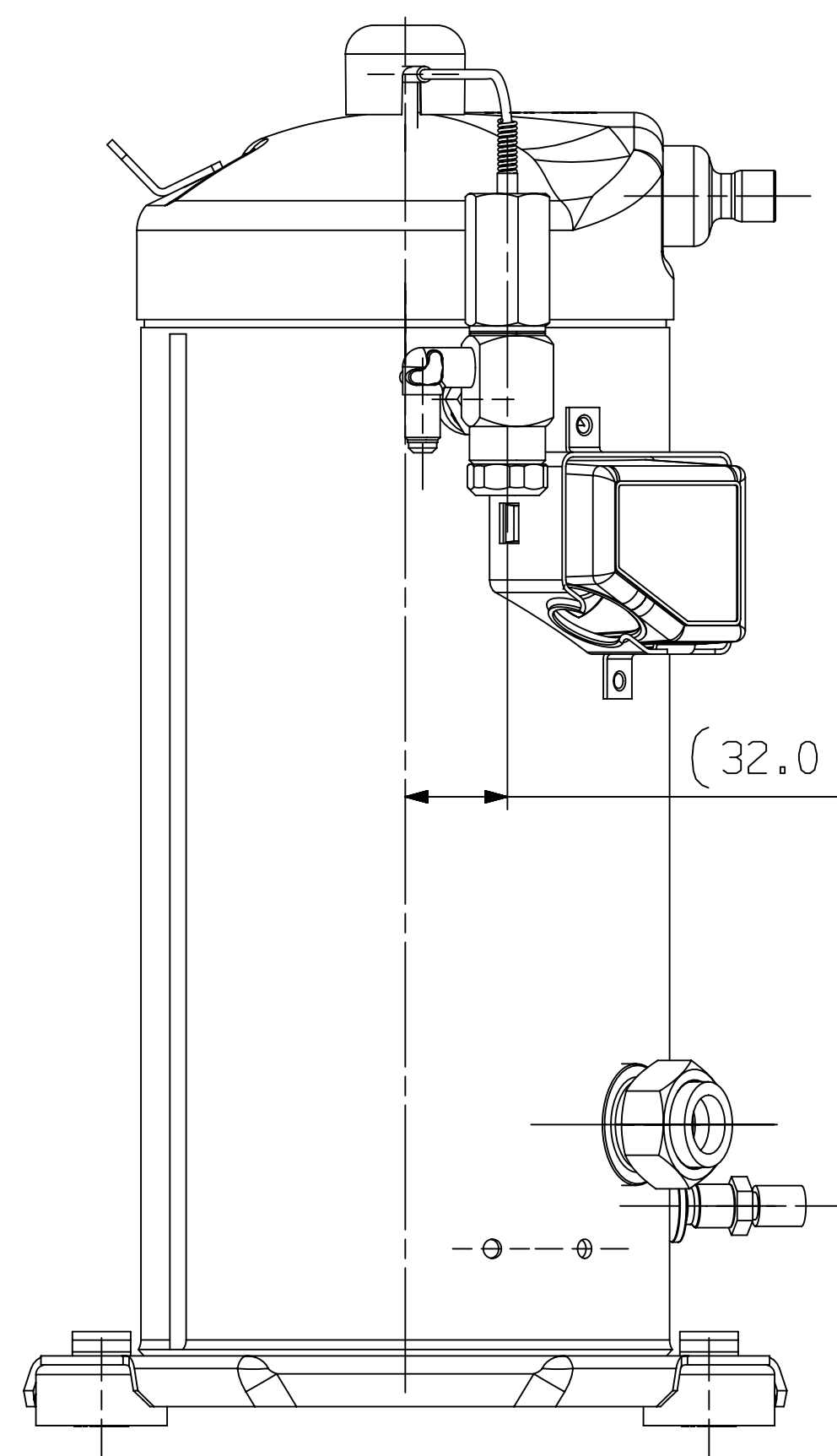
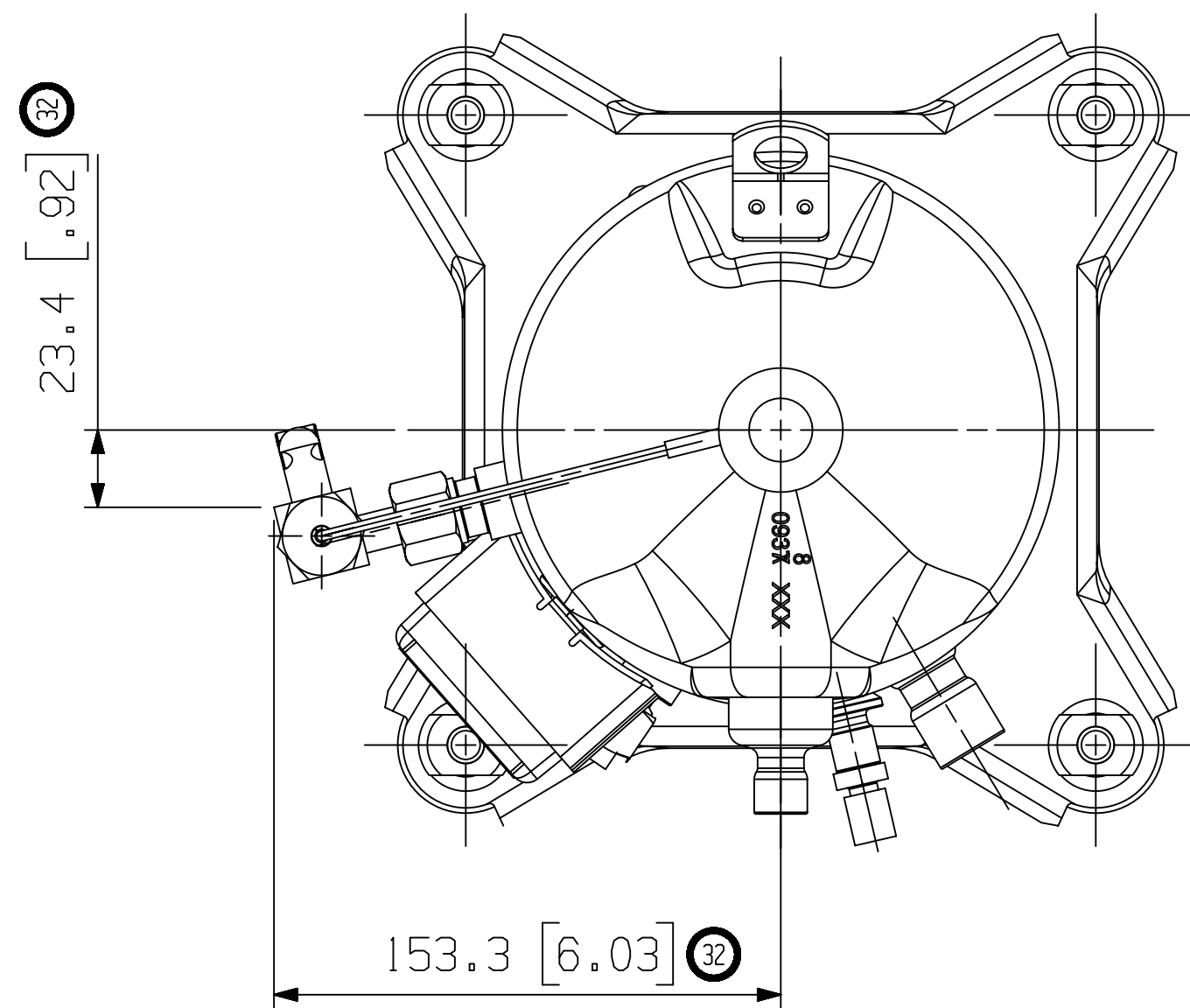
DO NOT SCALE DRAWING

CRITICAL PRODUCT CHARACTERISTICS

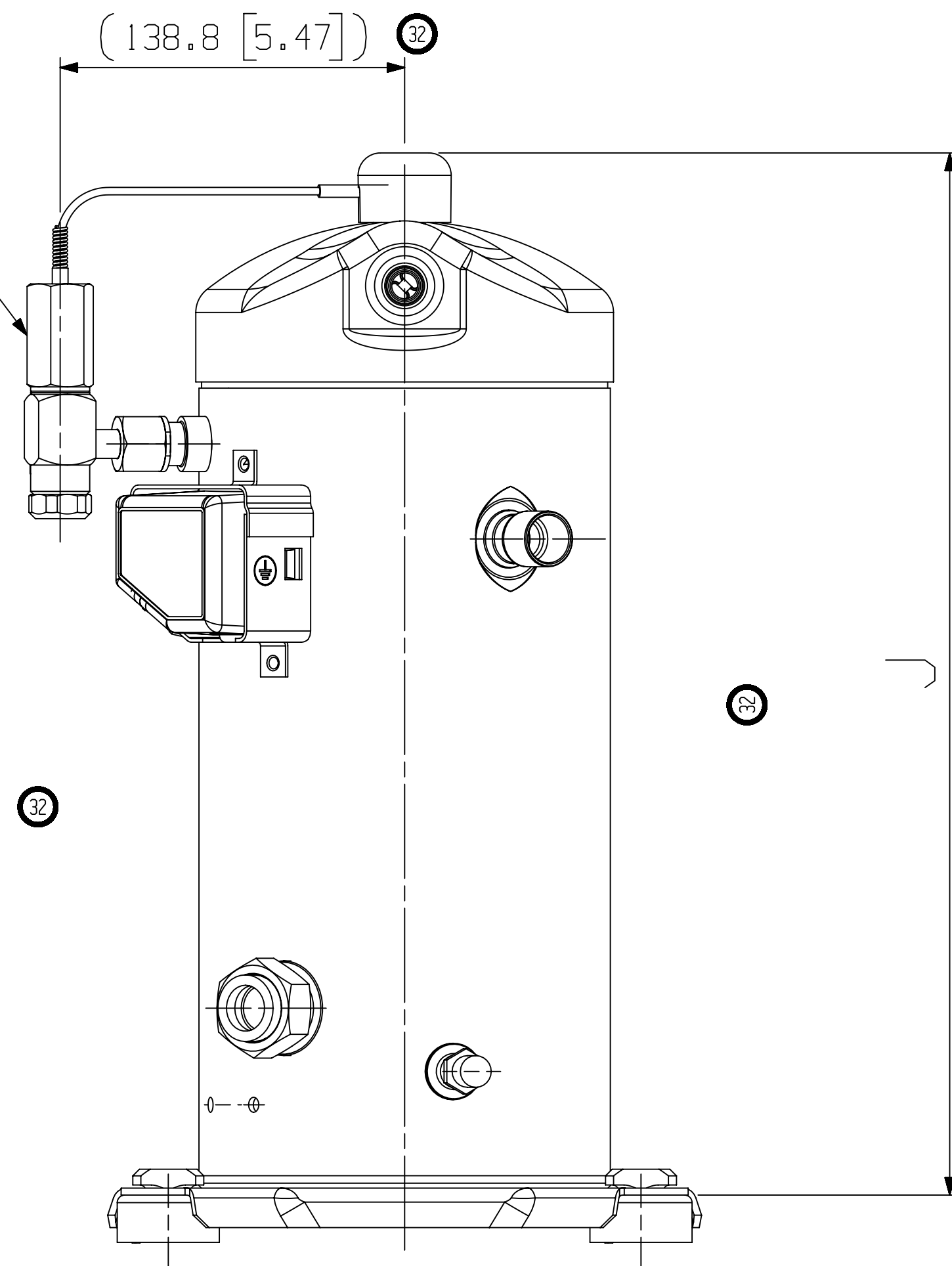
UNLESS OTHERWISE SPECIFIED DIMENSIONS ARE MILLIMETER OR (INCH)

TOLERANCES:
 1-PLACE +
 2-PLACE +
 ANGULAR ±

PART NO.	MODEL NUMBER	J ± 3.0	32
497-3542-00	ZF06/08K4E ZF06KQE	397.9 [15.66]	32
497-3542-01	ZF08/09K4E ZF08/09KQE	420.5 [16.56]	32
497-3542-02	ZF11K4E ZF11KQE	434.3 [17.10]	32



32 DISCHARGE TEMPERATURE CONTROL VALVE (DTC) PER BOM



ENG NOTICE NO.	REV. NO.	REVISIONS	DATE	BY	CHKD
ECN321503	32	REDRAWN WITH CHANGES	08-02-22	SPM	AMN
32-1198-023	0	RELEASED	01-11-99	AJA	DAN

CONFIDENTIALITY NOTICE			
10	THIS DRAWING AND INFORMATION CONTAINED HEREIN ARE THE EXCLUSIVE PROPERTY OF EMERSON CLIMATE TECHNOLOGIES, INC AND/OR ITS AFFILIATES (COLLECTIVELY "EMERSON") AND SHALL BE RETURNED UPON DEMAND AND SHALL NOT BE REPRODUCED IN WHOLE OR IN PART, DISCLOSED TO ANYONE ELSE OR USED, WITHOUT THE WRITTEN CONSENT OF EMERSON.		
MATERIAL SPECIFICATION	DRAWN BY	SUPERSEDES DWG NO / REV NO	DATE
N/A	SPM	497-3542-00 / 031	08-02-22
TITLE	SCALE	DATE FORMAT	DRAWING NUMBER
REF DWG-WELD COMP ASSM	1:2	MM-DD-YY	497-3542-00
			SHEET 4 OF 4 DWG
			4 SIZE

EMERSON
Copeland

INTERPRET PER ASME Y14.5M-1994 AND EMERSON DESIGN STANDARDS DS2002

DO NOT SCALE DRAWING

CRITICAL PRODUCT CHARACTERISTICS

UNLESS OTHERWISE SPECIFIED DIMENSIONS ARE MILLIMETER OR (INCH)

TOLERANCES:
1-PLACE : ±
2-PLACE : ±
ANGULAR : 1

© COPYRIGHT EMERSON - CONFIDENTIAL