

PART NUMBER	MODEL NUMBER	7		6		5		4		3		2		1	
		A _{+3.0}	B _{+3.0}	C _{+3.0}	D _{+3.0}	E _{+3.0}	F _{+3.0}	G _{+3.0}	SUCTION FITTING		ES NO.	DESCRIPTION			
497-3942-00	YF05KSE* ZF06K4E*	369.9 [14.56]	343.8 [13.54]	280.0 [11.02]	244.5 [9.62]	202.9 [7.99]	69.6 [2.74]	44.1 [1.74]	H	①	ES92-155	CONVERSION-METRIC			
497-3942-01	YF06KSE* YF07KSE* ZF08K4E* ZF09K4E*	392.5 [15.45]	366.4 [14.42]	302.6 [11.91]	264.4 [10.41]	222.8 [8.77]	75.3 [2.96]	49.8 [1.96]	H	①					
497-3942-02	YF09KSE* ZF11K4E*	406.3 [16.00]	380.1 [14.96]	316.4 [12.46]	277.1 [10.91]	235.5 [9.27]	75.3 [2.96]	49.8 [1.96]	H	①					
497-3942-03	YB14KSE* YB15KSE* ZB15KCE* ZB19KCE* ZS15K4E*	369.9 [14.56]	343.8 [13.54]	OMIT ③	244.5 [9.62]	202.9 [7.99]	69.6 [2.74]	44.1 [1.74]	H	①					
497-3942-04	YB20KSE* ZB21KCE* ZS19K4E* ZS21K4E*	392.5 [15.45]	366.4 [14.42]	OMIT ③	264.4 [10.41]	222.8 [8.77]	75.3 [2.96]	49.8 [1.96]	H	①					
497-3942-05	YB23KSE* ZB26KCE* ZS26K4E*	406.3 [16.00]	380.1 [14.96]	OMIT ③	277.1 [10.91]	235.5 [9.27]	75.3 [2.96]	49.8 [1.96]	H	①					
497-3942-06	YB27KSE* ZB29KCE*	423.3 [16.66]	397.1 [15.63]	OMIT ③	294.1 [11.58]	252.5 [9.94]	75.3 [2.96]	49.8 [1.96]	J	①					

NOTES:

① ALL TOLERANCES ±1.5 [0.06] UNLESS OTHERWISE SPECIFIED.

DUE TO ACCUMULATED ASSEMBLY TOLERANCES THE LISTED COMPONENTS MAY VARY FROM THE MOUNTING HOLES AS SHOWN BELOW:

◆ SUCTION FITTING : ±3.0 [0.12]
◆ DISCHARGE FITTING: ±3.0 [0.12]

2. TUBE ENDS MUST BE PLUGGED.

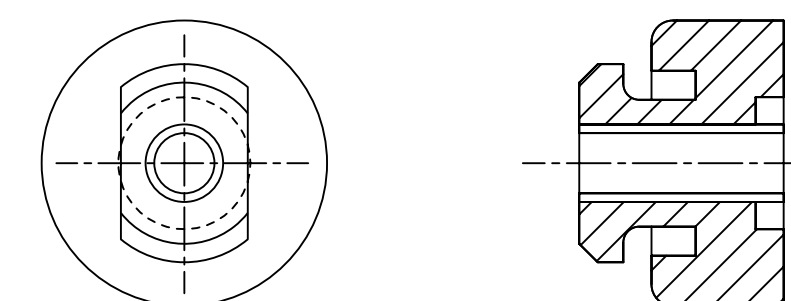
③ INJECTION FITTING & THERMOSTAT TUBE OMITTED.

4. FOR MORE INFORMATION SEE PRODUCT CATALOG.

5. FULL HEIGHT OF COMPRESSOR DOES NOT INCLUDE MOUNTING SPACERS.

6. MOUNTING KIT:

GROMMET DUROMETER	4 FOOT KIT
35-45	527-0116-00



COMPRESSOR WIRING DIAGRAM

USE COPPER CONDUCTORS ONLY. USE MINIMUM 75° C WIRE FOR AMPACITY DETERMINATION
INTERNAL MOTOR PROTECTION - ALLOW TIME FOR RESET, OVERCURRENT PROTECTION DEVICE RATING AND TYPE MUST BE IN ACCORDANCE WITH REGULATORY AGENCY END PRODUCT APPROVALS - SEE SYSTEM NAMEPLATE.
CRANKCASE HEATER, WHEN APPLIED, MUST BE CONNECTED ONLY TO ITS RATED VOLTAGE. TO CORRECT IMPROPER ROTATION OF THREE PHASE MODELS, SWITCH ANY TWO SUPPLY LINES. REFER TO THE APPLICABLE SYSTEM WIRING DIAGRAM.

005-1270-00
8-06

OBSOLETE

ECN319089	3	OBSOLETE -00 THRU -06	04-15-24	VVP	VDD
ECN325315	2	UPDATED TITLE BLOCK	09-12-23		
ECN319089	1	MODELS ADDED & SUCTION FITTING COLUMN	08-09-22	SAL	AMN
ECN319089	0	RELEASED	04-20-22	SAL	AMN

COPELAND

INTERPRET PER ASME Y14.5M-1994 AND COPELAND DESIGN STANDARDS DS2002

DO NOT SCALE DRAWING

CRITICAL PRODUCT CHARACTERISTICS

UNLESS OTHERWISE SPECIFIED DIMENSIONS ARE MILLIMETER OR (INCH)

TOLERANCES:
1-PLACE :
2-PLACE :
ANGULAR :

①

10 THIS DRAWING AND INFORMATION CONTAINED HEREIN ARE THE EXCLUSIVE PROPERTY OF COPELAND LP AND/OR ITS AFFILIATES (COLLECTIVELY "COPELAND") AND SHALL BE RETURNED UPON DEMAND AND SHALL NOT BE REPRODUCED IN WHOLE OR IN PART, DISCLOSED TO ANYONE ELSE OR USED, WITHOUT THE WRITTEN CONSENT OF COPELAND.

CONFIDENTIALITY NOTICE

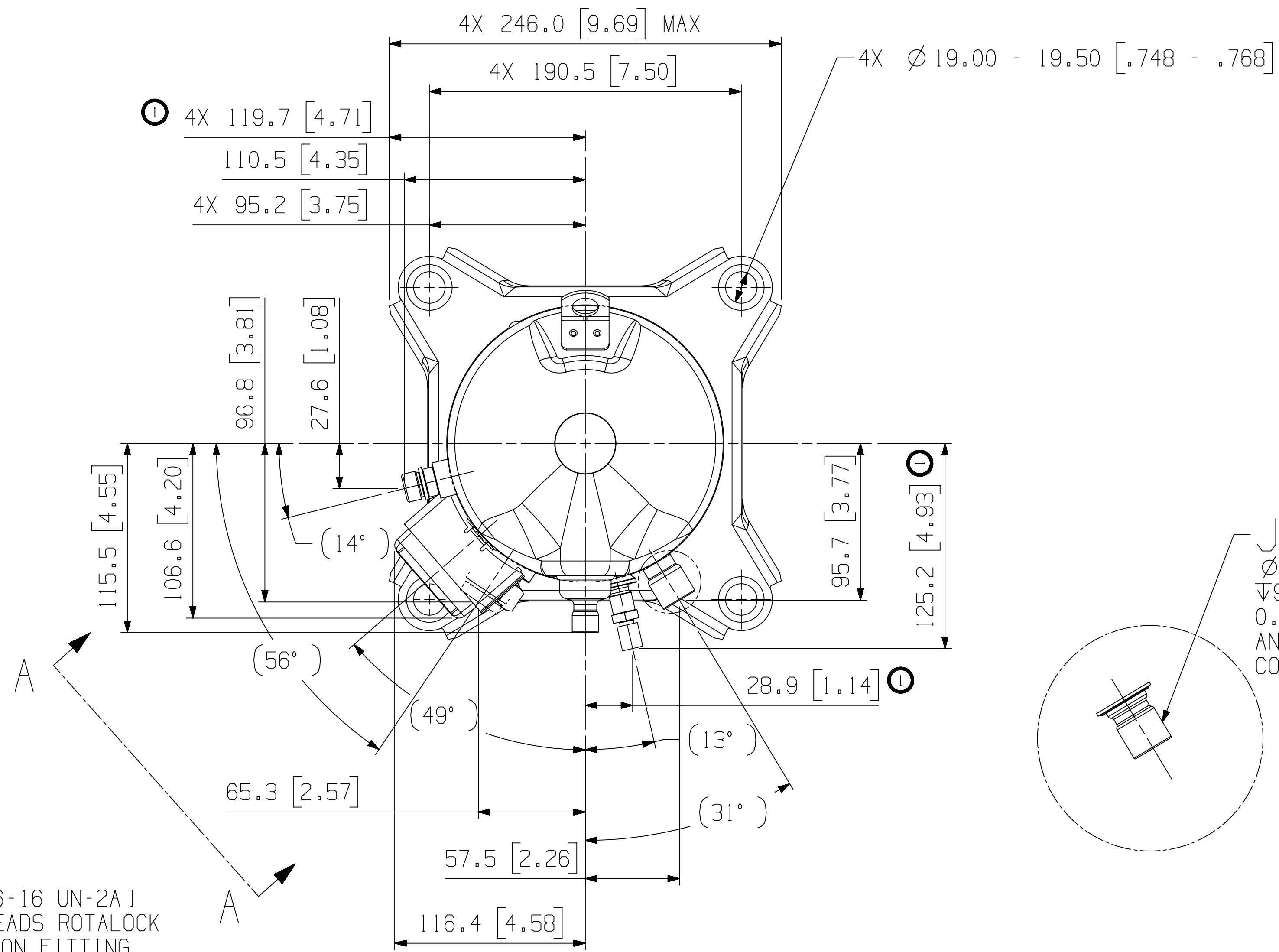
MATERIAL SPECIFICATION	DRAWN BY	SUPERSEDES DWG NO / REV NO
N/A	SAL	497-3542-00 / 031
	DATE	SCALE
	04-20-22	1:1

TITLE REF DWG-WELD COMP ASSM

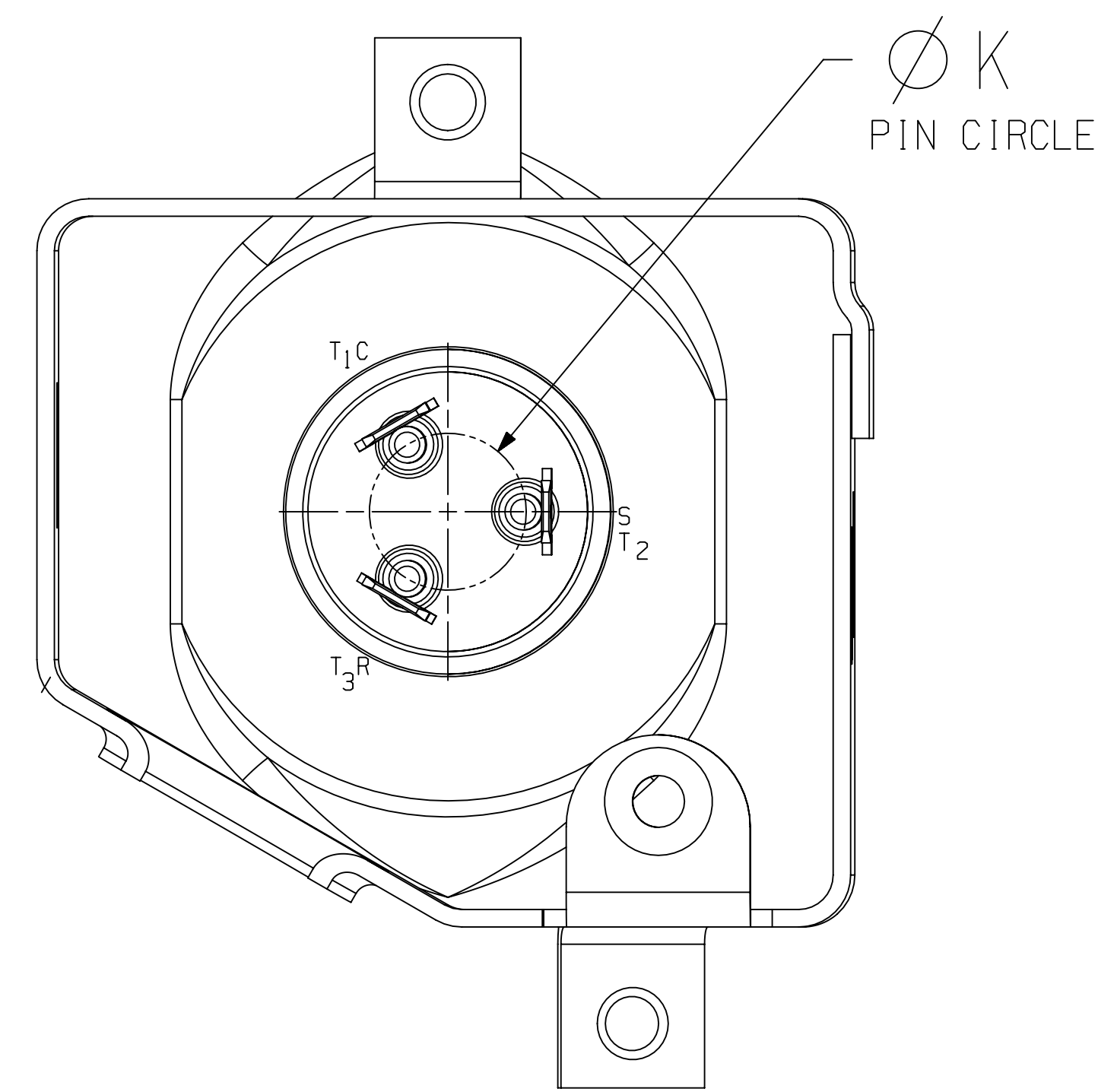
DRAWING NUMBER 497-3942-00

SHEET 1 OF 3 DWG SIZE 4

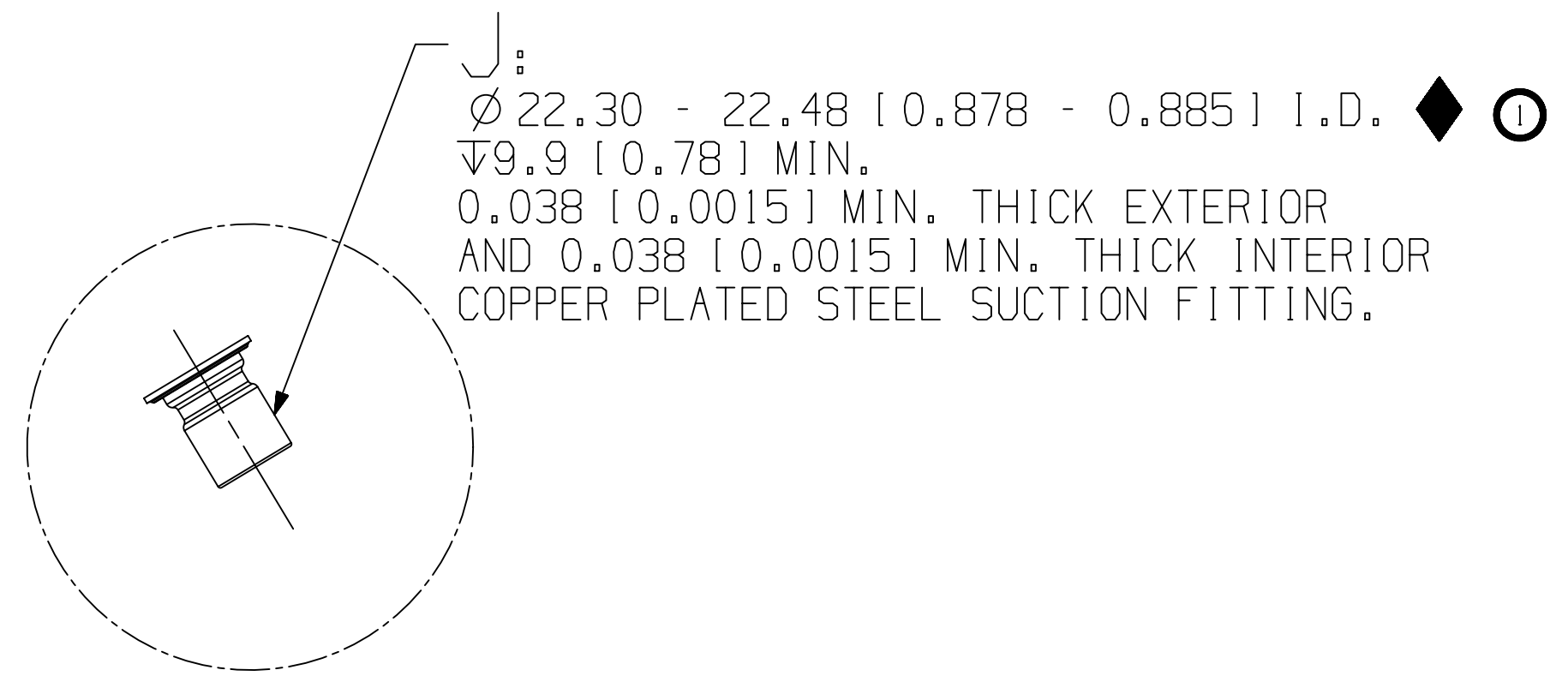
©COPYRIGHT COPELAND - CONFIDENTIAL



MOTOR TYPE	Ø K PIN CIRCLE
PFJ PFV TF5	13.46 [0.530]
TFD TFE TF7	17.45 [0.687]



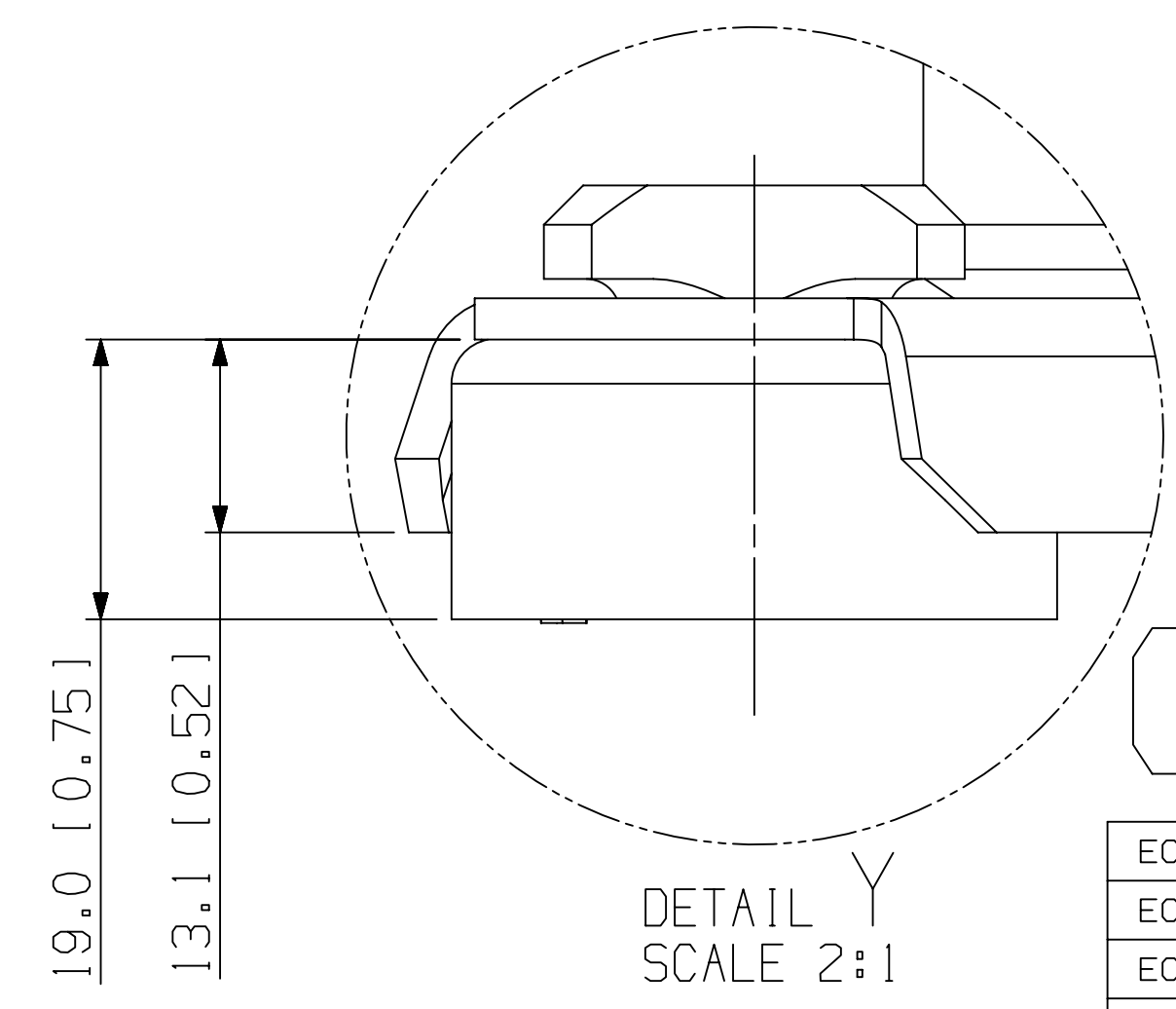
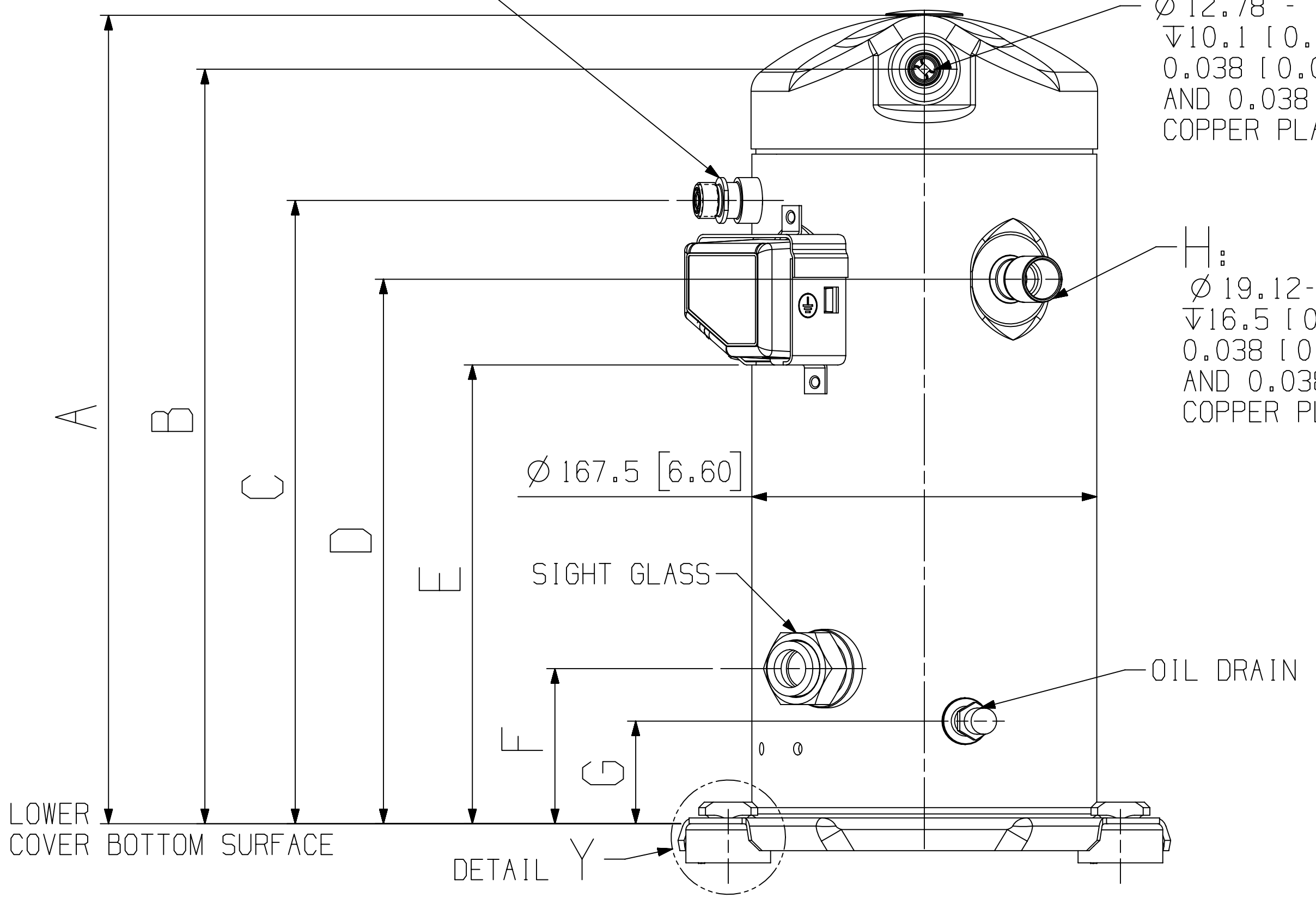
VIEW A-A
TERMINAL BOX LAYOUT OPTIONS
TERMINAL BOX COVER NOT SHOWN
SCALE 2:1



3
Ø 17.46 [11/16-16 UN-2A]
√8.47MIN. THREADS ROTALOCK
LIQUID INJECTION FITTING
TORQUE RANGE 27.1-40.7N-M
[240-360 LBS-IN]

Ø 12.78 - 12.95 [0.503 - 0.510] I.D. √10.1 [0.40] MIN. 0.038 [0.0015] MIN. THICK EXTERIOR AND 0.038 [0.0015] MIN. THICK INTERIOR COPPER PLATED STEEL DISCHARGE FITTING

H:
Ø 19.12-19.30 [0.753-0.759] I.D. √16.5 [0.65] MIN. 0.038 [0.0015] MIN. THICK EXTERIOR AND 0.038 [0.0015] MIN. THICK INTERIOR. COPPER PLATED STEEL SUCTION FITTING



OBSOLETE

ECN319089	3	OBSOLETE -00 THRU -06	04-15-24	VVP	VDD
ECN325315	2	UPDATED TITLE BLOCK	09-12-23		
ECN319089	1	MOTOR TYPE ADDED	08-09-22	SAL	AMN
ECN319089	0	RELEASED	04-20-22	SAL	AMN
ENG NOTICE NO.	REV. NO.	REVISIONS	DATE	BY	CHKD

10
THIS DRAWING AND INFORMATION CONTAINED HEREIN ARE THE EXCLUSIVE PROPERTY OF COPELAND LP AND/OR ITS AFFILIATES (COLLECTIVELY "COPELAND") AND SHALL BE RETURNED UPON DEMAND AND SHALL NOT BE REPRODUCED IN WHOLE OR IN PART, DISCLOSED TO ANYONE ELSE OR USED, WITHOUT THE WRITTEN CONSENT OF COPELAND.

COPELAND

INTERPRET PER ASME Y14.5M-1994 AND COPELAND DESIGN STANDARDS DS2002

DO NOT SCALE DRAWING

CRITICAL PRODUCT CHARACTERISTICS

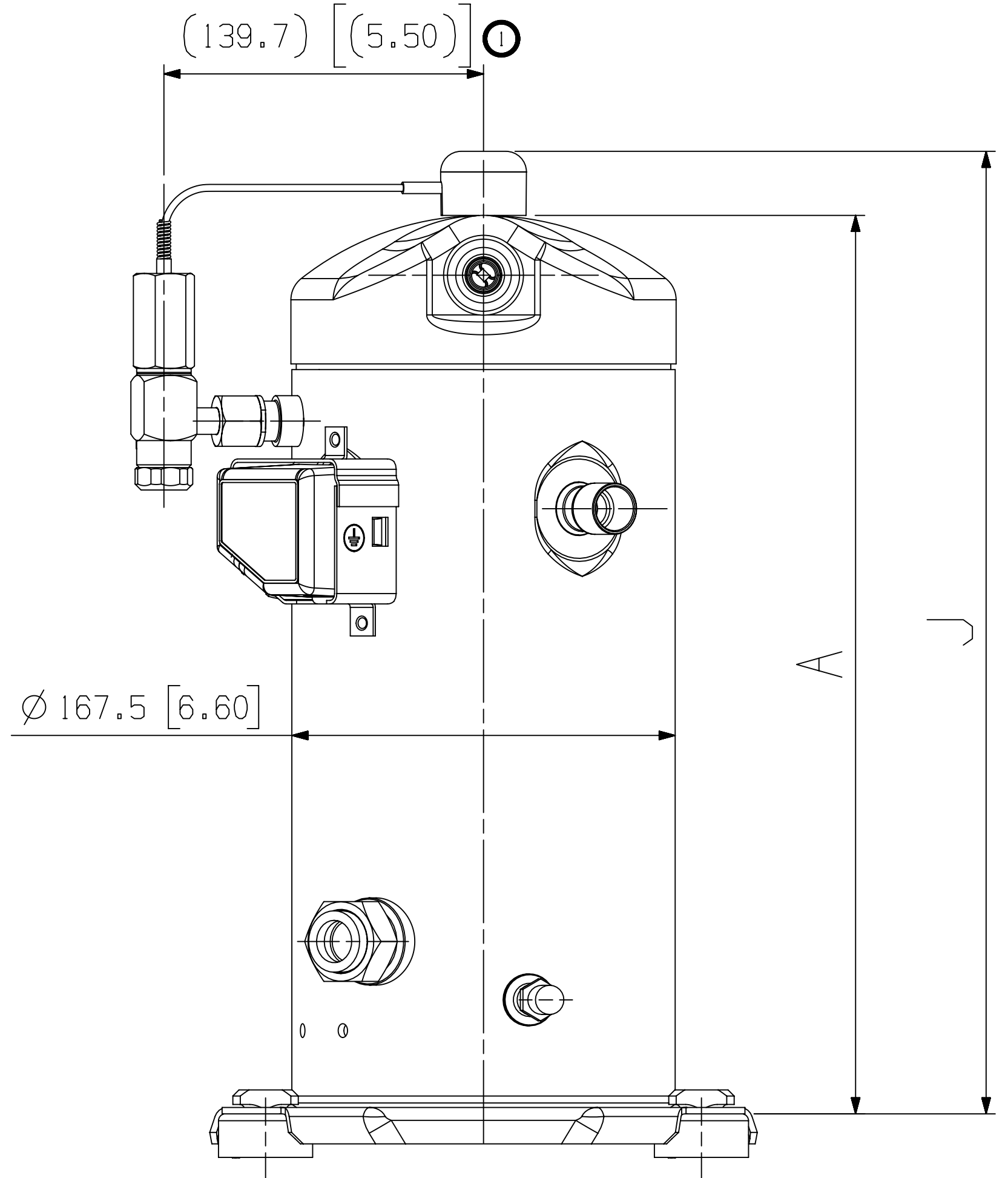
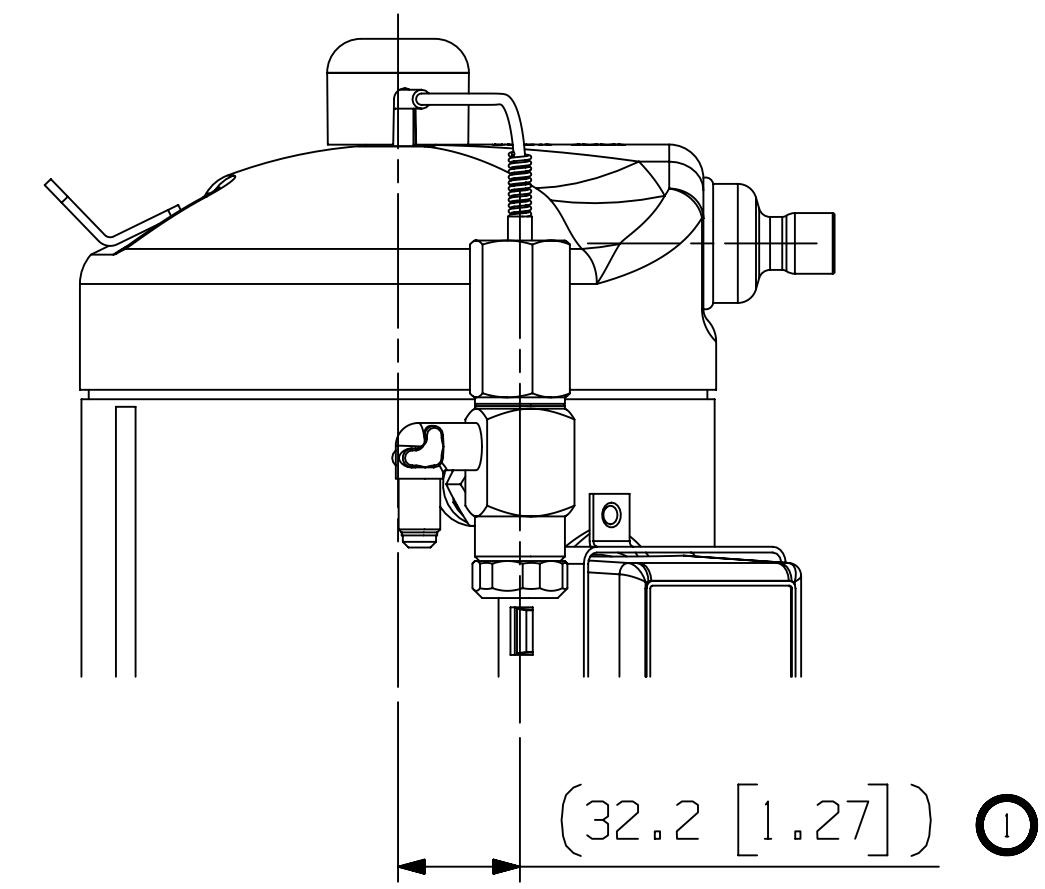
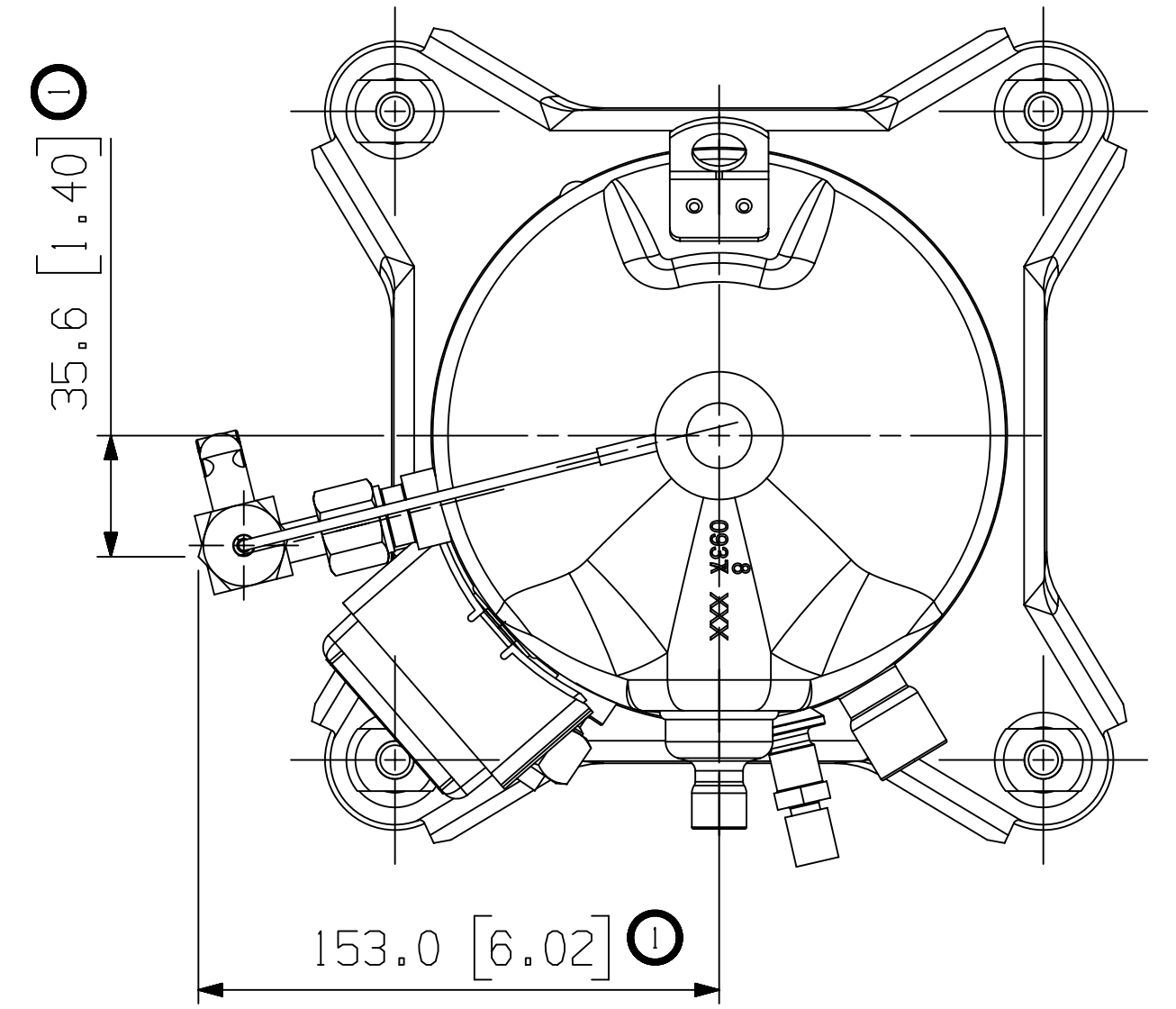
UNLESS OTHERWISE SPECIFIED DIMENSIONS ARE MILLIMETER OR (INCH)

TOLERANCES:
1-PLACE +
2-PLACE ±
ANGULAR ∠

1

MATERIAL SPECIFICATION	DRAWN BY	SUPERSEDES DWG NO / REV NO
N/A	SAL	497-3542-00 / 031
TITLE	DATE	SCALE
REF DWG-WELD COMP ASSM	04-20-22	1:2
DRAWING NUMBER	SHEET 2 OF 3 DWG	DATE FORMAT: MM-DD-YY
497-3942-00	4	
	SIZE	

PART NO.	MODEL NUMBER	A _{±3.0}	J _{±3.0}
497-3942-00	YF05KSE* ZF06K4E*	369.9 [14.56]	397.9 [15.66]
497-3942-01	YF06KSE* YF07KSE* ZF08K4E* ZF09K4E*	392.5 [15.45]	420.5 [16.56]
497-3942-02	YF09KSE* ZF11K4E*	406.3 [16.00]	434.3 [17.10]



OBSOLETE

ENG NOTICE NO.	REV. NO.	REVISIONS	DATE	BY	CHKD
ECN319089	3	OBSOLETE -00 THRU -06	04-15-24	VVP	VDD
ECN325315	2	UPDATED TITLE BLOCK	09-12-23		
ECN319089	1	MODELS ADDED	08-09-22	SAL	AMN
ECN319089	0	RELEASED	04-20-22	SAL	AMN

CONFIDENTIALITY NOTICE			
10	THIS DRAWING AND INFORMATION CONTAINED HEREIN ARE THE EXCLUSIVE PROPERTY OF COPELAND LP AND/OR ITS AFFILIATES (COLLECTIVELY "COPELAND") AND SHALL BE RETURNED UPON DEMAND AND SHALL NOT BE REPRODUCED IN WHOLE OR IN PART, DISCLOSED TO ANYONE ELSE OR USED, WITHOUT THE WRITTEN CONSENT OF COPELAND.		
MATERIAL SPECIFICATION	DRAWN BY	SUPERSEDES DWG NO / REV NO	DATE
N/A	SAL	497-3542-00 / 031	04-20-22
TITLE	SCALE	DATE FORMAT	DRAWING NUMBER
REF DWG-WELD COMP ASSM	1:2	MM-DD-YY	497-3942-00
			SHEET 3 OF 3 DWG
			4 SIZE

COPELAND

INTERPRET PER ASME Y14.5M-1994 AND COPELAND DESIGN STANDARDS DS2002

DO NOT SCALE DRAWING

CRITICAL PRODUCT CHARACTERISTICS

UNLESS OTHERWISE SPECIFIED DIMENSIONS ARE MILLIMETER OR (INCH)

1-PLACE :
2-PLACE :
ANGULAR :

©COPYRIGHT COPELAND - CONFIDENTIAL