

GENERAL INFORMATION:

SHAFT RUNOUT: .001[.025] T.I.R. PER INCH LENGTH OF EXTENSION

BEARINGS: BALL

MOUNTING POSITION: ALL ANGLE

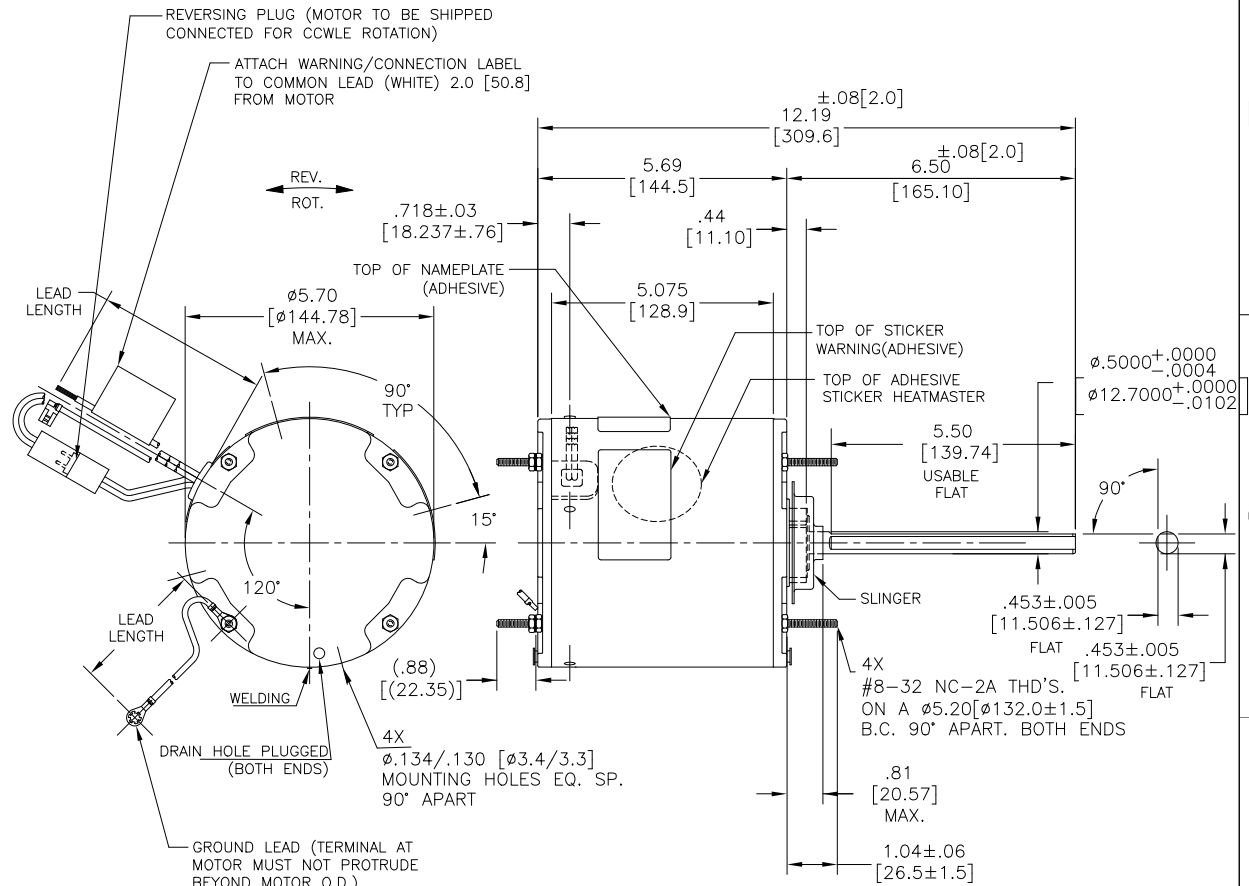
ELECTRICAL DATA:

OVERLOAD PROTECTOR: AUTOMATIC RESET (SENSATA 7AM 304)

LINE LEADS: NO. 18 GA., .06[1.52] THK. XLP 125°C INSUL.

REVERSING LEADS: NO. 18 GA., .03[.76] THK. XLP 125°C INSUL.

GROUND LEAD: NO. 18 GA., .03[.76] THK. (GREEN) INSUL.



SAMPLE SM19-384 NAMEPLATE DATA:	EXTERNAL CONNECTION DIAGRAM
MODEL NO.: 5KCP39PGDD673S CUST. P/N: FEH1056SF HP: 1/2 ROT.: REVERSIBLE RPM: 1075 TYPE: UF FRAME: 48Y VOLTS: 460 PH: 1 AMPS: 1.5 HZ: 60 INS.: F AMB.: 70°C DUTY: AIR OVER CAP.: 10 MFD/370 V THERMALLY PROTECTED	<p>SEP. CAP.</p> <p>BROWN</p> <p>BRN/WHT</p> <p>WHITE</p> <p>BLACK</p> <p>LINE</p> <p>ROTATION</p> <p>BLACK</p> <p>WHITE</p> <p>CCWLE</p> <p>WHITE</p> <p>BLACK</p> <p>CWLE</p>
REGAL BELLOI E27885 MADE IN INDIA	614131-242

GREEN (GROUND)	12.0/13.0 [304.8/330.2]	#10 EYELET
BLACK/WHITE	3.0/5.0 [76.2/127.0]	REVERSING PLUG
BROWN	48.0/51.0 [1219.2/1295.4]	.25[6.35] FLAG
BROWN/WHITE	48.0/51.0 [1219.2/1295.4]	.25[6.35] FLAG
WHITE	48.0/51.0 [1219.2/1295.4]	.50[12.70] SKIN
BLACK	48.0/51.0 [1219.2/1295.4]	.50[12.70] SKIN
COLOR	LENGTH	TERMINAL OR STRIP LENGTH

REGAL-BELOI CORPORATION (RBC) PROVIDES TECHNICAL ASSISTANCE TO OUR CUSTOMERS IN SEVERAL AREAS. SINCE RBC DOES NOT RECEIVE ALL DATA CONCERNING THE USE AND APPLICATION OF THE MOTOR, THE SUITABILITY OF THE MOTOR FOR THE APPLICATION MUST BE DETERMINED BY THE CUSTOMER.

DIMENSIONS WITHOUT TOLERANCES ARE FOR REFERENCE ONLY.

- NOTES:
- 1 ATTACH INSTRUCTION SHEET 69P9-3 ONTO SHAFT APPROX. 1.0[25] FROM WATER SLINGER
 - 2 4X EXTRA HEX NUTS ON LEAD END (FINGER TIGHT)(FOR MM1 PLANT)FOR STUDS
 - 3 4X SCREWS N194P1504B9& 4X HEX NUTS N238P15B9 TO BE PUT IN A POLYBAG.
 4. ALL LABEL READ FROM LE
 5. SPRING SHIM IN OLE SIDE

MAIN FRAME - OLE	ENCLOSED
END FRAME - OLE	ENCLOSED
MAIN FRAME - LE	ENCLOSED
END FRAME - LE	ENCLOSED

CUSTOMER	DISTRIBUTION SERVICE
----------	----------------------

DRAWING REVISION	REVISION BY	DATE	TOLERANCES UNLESS OTHERWISE SPECIFIED	DRAWN BY:	REGAL™ Regal Beloit America, Inc.
ECO	MG	16-04-22	DEC. INCH mm ANGLE	MK	
ECR-0216351	LS	16-04-22	.X ±0.1 [±2.5] ±0.5°	DATE:	14.10.19
ECO DESCRIPTION	ENERGY CONSERVATIONIST STICKER IS REMOVED		.XX ±0.02 [±0.51]	APPROVED BY:	LS
			.XXX ±0.005 [±0.127]	DATE:	14.10.19
			REMOVE BURRS & BREAK SHARP EDGES .003,015 [0.076,381]	PROCESS/FINISH	
			CORNER FILLETS .02 [51]	MATERIAL	MODEL-RFHP-48FR OUTLINE
			MACHINED SURFACES .125 INCH mm 3/2	SIZE DWG NO	FEH1056SF_FA
			mm SHOWN IN [BRACKETS]	THIRD ANGLE PROJECTION	SHEET 1